

4

3

2

1

REV	REVISION RECORD	ECN	BY	APVD	DATE
X1	PROPOSAL PER EWR 107966	-	RJB	RJB	8/20/2013
A	NEW RELEASE	506704	MAR	PVB	10/15/2013

NOTES: UNLESS OTHERWISE SPECIFIED

- INTERPRET DRAWING IN ACCORDANCE WITH ANSI Y14.5M-1982.
- MATERIAL: C21000 BRASS, EXTRA SPRING TEMPER, .0310±.0005 UNPLATED STOCK THICKNESS PER ASTM B36.
- FINISH: POST-PLATED .000100"-.000180" 100% ELECTROPLATED TIN OVER .000100" COPPER PER ASTM B545.
- ALL DIMENSIONS APPLY AFTER PLATING.
- .003 MAX BLANKING BURR PERMISSIBLE, BURRS NOT TO EXCEED THE SPECIFIED FEATURE TOLERANCE. BURR SIDE FACES AWAY FROM HUB. NO BURRS, WHERE NOTED.
- .005 MAX RADII & FILLETS PERMISSIBLE ON ALL CORNERS.
- PITCH CONSISTENCY NOT TO EXCEED ±.005 WHEN THE OAL OF 5 STRIPS, 4 CONTACTS LONG ARE MEASURED.
- CAMBER NOT TO EXCEED .06, TWIST NOT TO EXCEED 18° OVER 18 INCHES.
- QUANTITY OF PARTS PER REEL: 25,000 ONE BREAK NOT LESS THAN 25% OF REEL CAPACITY. PACKAGE PER AUTOSPlice SPEC 0049.
- SOLDERABILITY PER ANSI/J-STD-002 TEST A, CATEGORY 3.

F

E

D

C

B

A

F

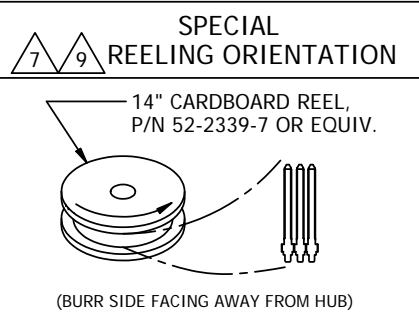
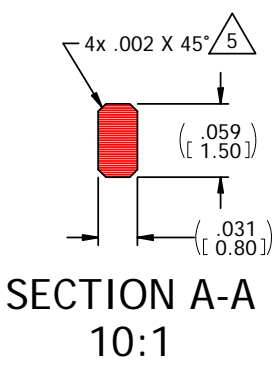
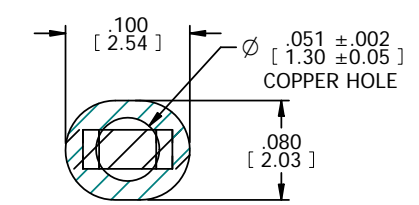
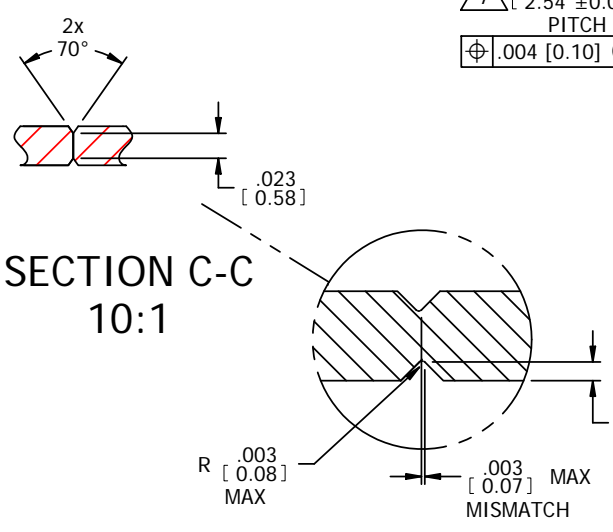
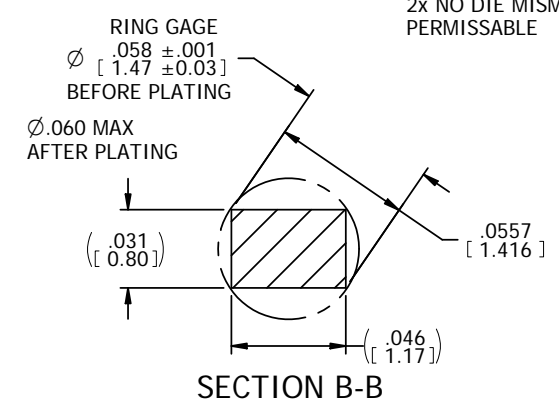
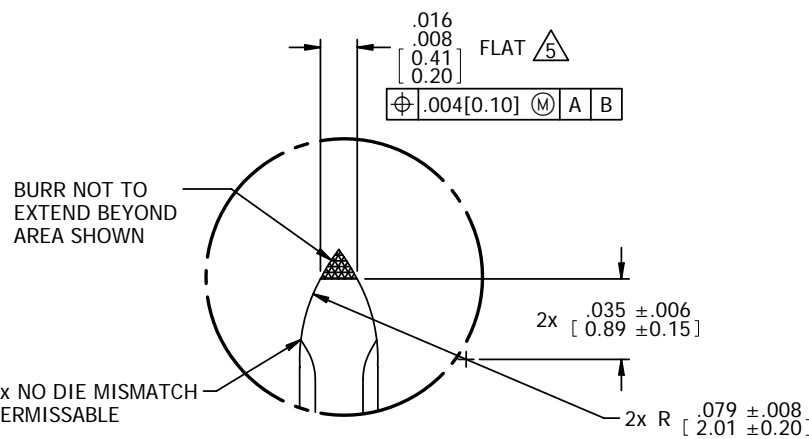
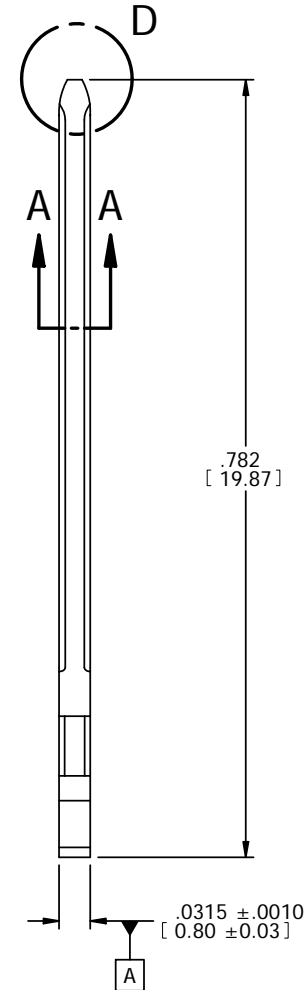
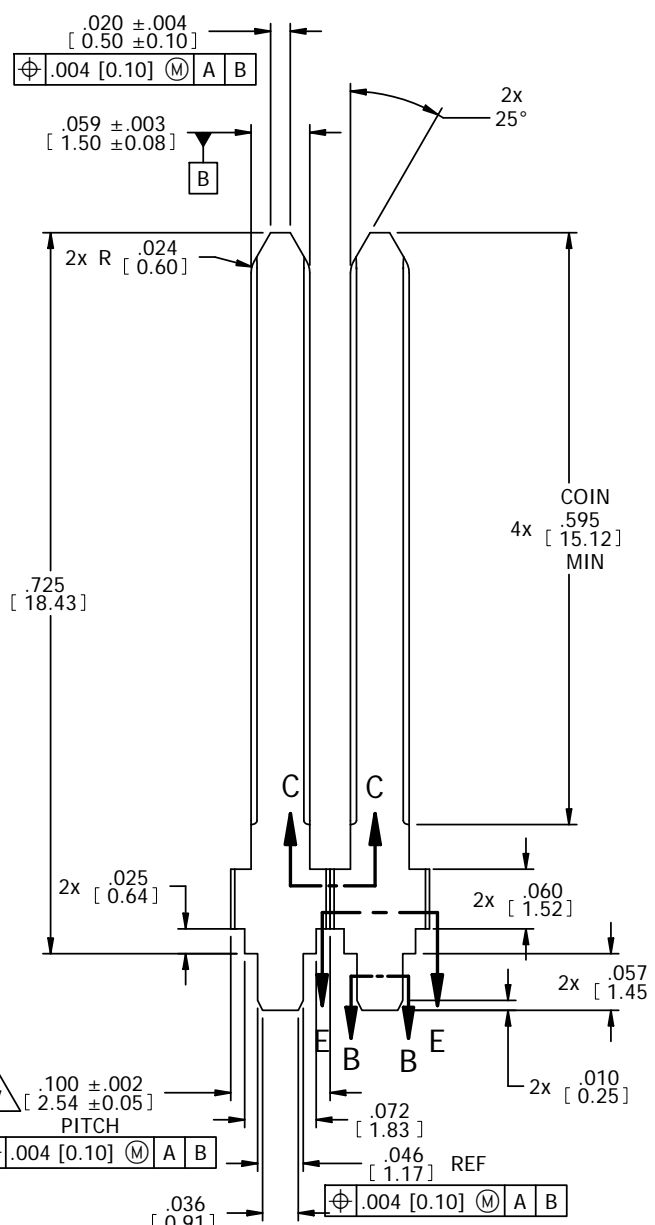
E

D

C

B

A



**CONFIDENTIAL
CUSTOMER DRAWING**

The drawing and the information set forth hereon are the property of Autossplice, Inc. and are to be held in trust and confidence. Publication, disclosure, or use for any purpose not expressly authorizing in writing by Autossplice, Inc. is prohibited.

MATERIAL:
FINISH:

TOLERANCES UNLESS OTHERWISE SPECIFIED DIMENSIONS IN INCHES (mm)
DECIMAL: .XX = ±.01
[X.X] = ±[0.3]
[X.XX] = ±.005
[X.XX] = ±[0.13]
ANGULAR: ±.3°
ITEM NUMBERS FOR INSPECTION: [XX]
◇ DENOTES SPECIAL CHARACTERISTIC

autossplice		Autossplice, Inc. 10121 Barnes Canyon Rd. San Diego, CA 92121-2725 858-535-0077	
THIRD ANGLE PROJECTION	DRAWN BY: BADGER	DATE: 8/20/13	REVISION: A
ENGINEERED BY: BADGER	DATE: 8/20/13	TITLE: VERTICAL TERMINAL, .059	
SIZE: C	FSCM NO: OAE89	DRAWING NUMBER: C7-V1116-002TT	MODEL NO: 7-V1116-002.pdf
SCALE: 2:1	SAD NO: C7-V1116-002TTa.dft	MODEL NO: 7-V1116-002.pdf	SHEET 1 OF 1

4

3

2

1