

4

3

2

1

NOTES: UNLESS OTHERWISE SPECIFIED

1. INTERPRET DRAWING IN ACCORDANCE WITH ASME Y14.5-1994.
2. MATERIAL: C26000 BRASS, 1/2 HARD.
3. FINISH: SEE PART NUMBER BREAKDOWN.
4. ALL DIMENSIONS APPLY AFTER PLATING.
5. .004 MAX BLANKING BURR PERMISSIBLE. BURRS MUST NOT EXCEED THE SPECIFIED FEATURE TOLERANCE.
6. .005 [0.13] MAX RADII PERMISSIBLE ON ALL CORNERS.
7. PART WILL BE SUPPLIED ON A CONTINUOUS REEL AS SHOWN IN WINDING INSTRUCTIONS.
8. QUANTITY OF PARTS PER REEL: 7,000 – ONE BREAK AND NO SPLICES ALLOWED.
9. SOLDERABILITY:
 - FINISH (STD) = MEETS REQUIREMENTS PER IPC/EIA/JEDEC J-STD-002, TEST A, CATEGORY 3.
 - FINISH TT = MEETS REQUIREMENTS PER IPC/EIA/JEDEC J-STD-002, TEST A, CATEGORY 2.
10. DELETE NOTE.
11. DELETE NOTE.
12. CURRENT RATING: 15 AMPS.
13. TEMPERATURE RATING: 300°F [149C] INCLUDING TEMPERATURE RISE.
14. RECOMMENDED SPLAYED FINISHED HOLE SIZE: $\varnothing.055 \pm .003$ [1.40 \pm 0.08]
 - a) RECOMMENDED PCB DRILL HOLE: $\varnothing.055 \pm .001$ [1.40 \pm 0.03]
 - b) WITH 1oz COPPER: $\varnothing.051 \pm .002$ [1.30 \pm 0.05].
 - c) TIN/LEAD FINISHED HOLE: $\varnothing.050 \pm .002$ [1.27 \pm 0.05].
 - d) CENTER TO CENTER: $\varnothing.200 \pm .002$ [5.08 \pm 0.05].

PART NUMBER BREAKDOWN

7-13330 - 8 [] []

TYPE
TAB

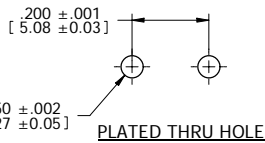
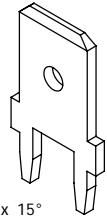
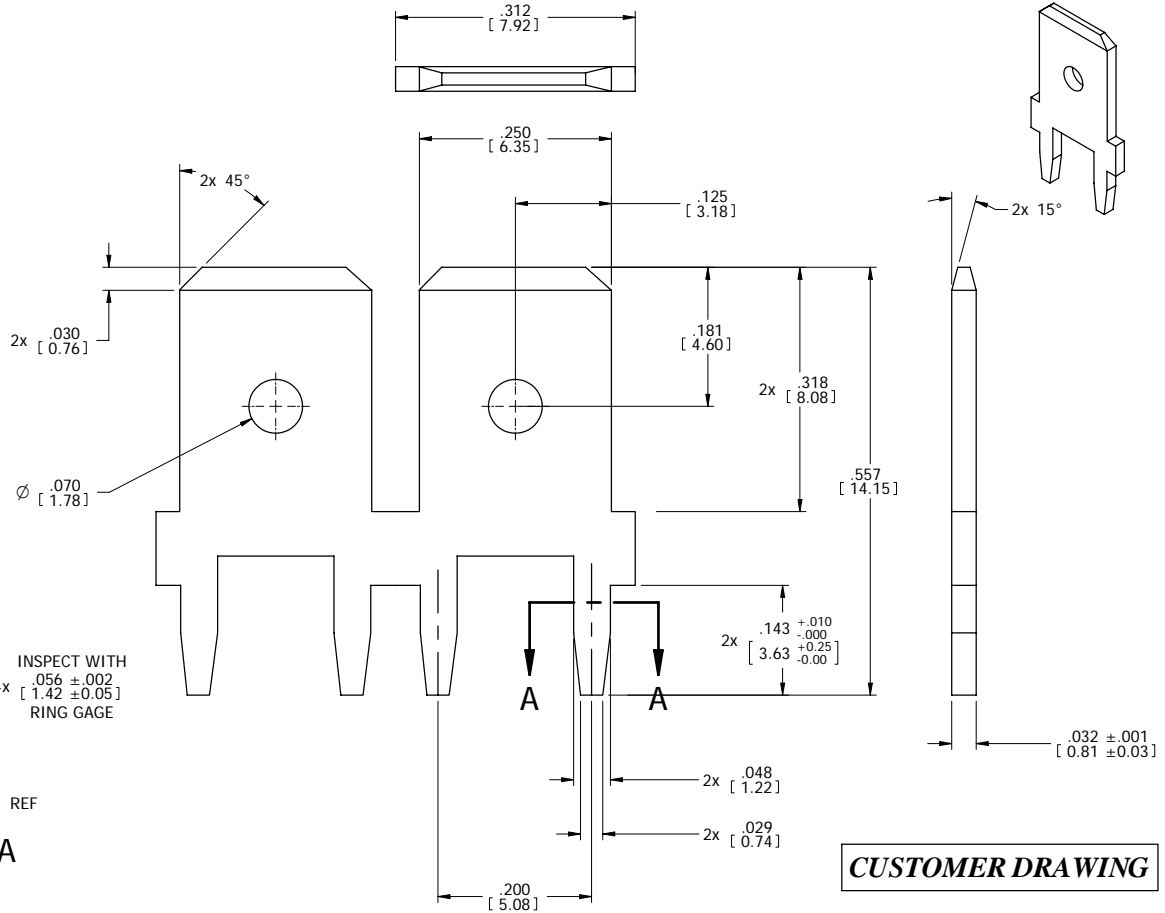
THICKNESS

8 = .032

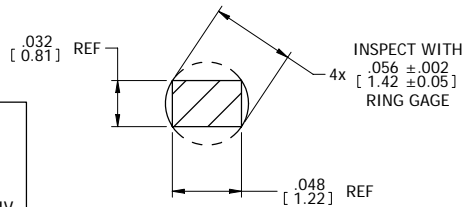
FINISH: POST PLATED 3

OMIT STD = .000120"-.000200" [3.05-5.08 MICRONS] 90/10 SnPb OVER
 .000050"-.000100" [1.27 – 2.54 MICRONS] NICKEL.
 TT = .000160"-.000240" [4.06-6.10] MICRONS MATTE Sn (LEAD FREE) OVER
 .000080"-.000160" [2.03-4.06] MICRONS NICKEL.

REV	REVISION RECORD	ECN	BY	APVD	DATE
C	ADDED HOLE FOR SPLAYED PART	15710	MNH	JB	08/12/98
D	PER EWR 100432	500588	TM	JB	06/20/02
E	OBS ITEM 8A PER EWR 102600	502481	JB	JB	11/02/02
F	REVISED & REDRAWN PER EWR 104606	504009	RJB	PVB	12/05/05

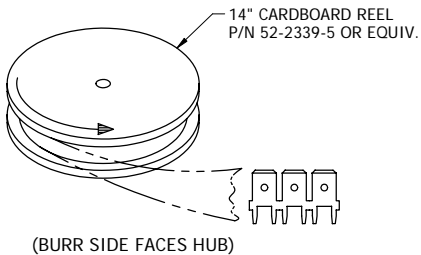


PLATED THRU HOLE



SECTION A-A

7 WINDING INSTRUCTIONS



CUSTOMER DRAWING

TOLERANCES UNLESS OTHERWISE SPECIFIED DIMENSIONS IN INCHES		AUTOSPLICE		AUTOSPLICE, INC.	
DECIMAL	XX = ± .01 [X.X] = ± [0.3] XXX = ± .005 [X.XX] = ± [0.13]	10121 Barnes Canyon Rd. San Diego, CA 92121-2725 858.585.0077	12-02-93	12-02-93	12-02-93
ANGULAR	± 5°	10121 Barnes Canyon Rd. San Diego, CA 92121-2725 858.585.0077	W.S.	ENGINEERED BY	N.C.
DIAMETER	± .005	1/4 QUICK DISCONNECT TERM.			
SIZE	C	SCALE	OAE89	DATE	F
REVISION		REV NO.	C7-13330-8[] []	MODEL NO.	7-13330.ppt
					SHEET 1 OF 1

The drawing and the information set forth hereon are the property of AutosplICE, Inc. and are to be held in trust and confidence. Publication, disclosure, or use for any purpose not expressly authorizing in writing by AutosplICE, Inc. is prohibited.

4

3

2

1