

NOTES: UNLESS OTHERWISE SPECIFIED

- 1 10,000 PINS APPROX. PER AUTOHEADER™ REEL.
FEEDER COMPATIBLE SPLICES PERMITTED,
2 SPLICES MAX PER REEL.

PART NO./ ORDERING CODE

23-1031 P □ □ □ Δ Δ X

TYPE
1 ROW,
.156" CENTERS
PIN SHAPE/SIZE
P = .040 RD

TOTAL NO. OF POS.
1 00 = CONTINUOUS REEL

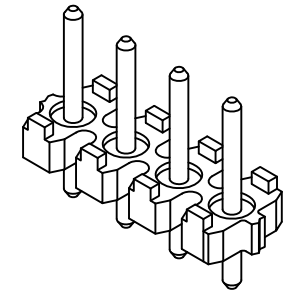
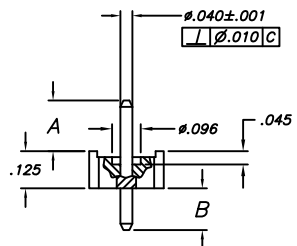
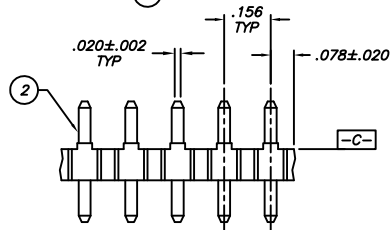
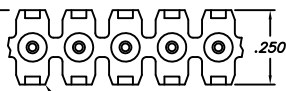
VARIATION
OMIT = C26000 BRASS, 1/2 HARD
1 = C10200 COPPER, HARD
FINISH
AA = .000120" MIN 90/10 TIN/LEAD
OVER .000050" MIN NICKEL
TT = .000120" MIN Sn (PB FREE)
OVER .000050" MIN NICKEL

CODE	A±.010	B±.010
A1	.140	.140
A2	.841	

CUSTOM DIMENSIONS ARE AVAILABLE
UPON REQUEST TO FACTORY

REV	REVISION RECORD	ECN	BY	APVD	DATE
X3	ADDED "TT" PLATING EWR 107561	-	KR	KR	04-25-99
A	INITIAL RELEASE	16977	TM	PVB	11-12-98
B	PERPENDICULARITY WAS .005 DIA.	501259	TM	PVB	01-24-99
C	A DIM. WAS .440, B DIM. WAS .145	502263	Pete	PVB	07-28-99
D	ADDED 1/2 HARD MATERIAL	502268	Pete	PVB	07-30-99
E	A DIM. WAS .125, B DIM. WAS .125	502378	Pete	PVB	10-07-99
F	ADDED "TT" PLATING EWR 107576	506446	KR	KR	08-04-99

△.010/1.00

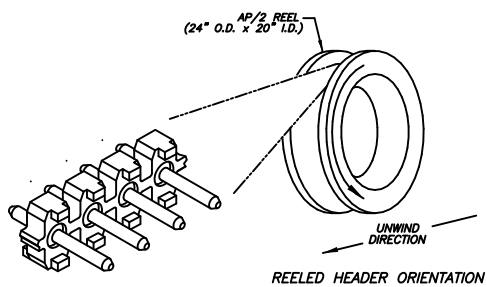


MATERIAL:

- 1 INSULATOR:
UL 94V-0 FLAMMABILITY RATED
THERMOPLASTIC
COLOR: BLACK

- 2 PIN:
SEE P/N ORDERING CODE
FINISH:
SEE P/N ORDERING CODE
(PIN TIPS BARE AT CUTOFF)

CUSTOMER DRAWING



This drawing and the information set forth hereon are the property of AutosplICE, Inc. and are to be held in trust and confidence. Publication, duplication, disclosure, or use for any purposes not expressly authorized in writing by AutosplICE, Inc. is prohibited.

TOLERANCES
UNLESS OTHERWISE SPECIFIED
GIVE IN INCHES
DECIMAL XX = ±.01
XXX = ±.005
ANGULAR: ± 3°
◇ DENOTES SPECIAL CHARACTERISTIC

autosplICE AUTOSPLICE INC. 10121 Barnes Canyon Road San Diego, California 92121 (619) 538-0077		DATE 4-07-99
DESIGNED BY CVD	CHECKED BY PVB	DATE 4-07-99
TITLE AUTOHEADER™ 1 ROW, .156" CENTERS		
SIZE C	FROM NO. 0AEB9	ORDER NO. C23-1031
SCALE: 4:1		DWG FILE NO. C23-1031.DWG