

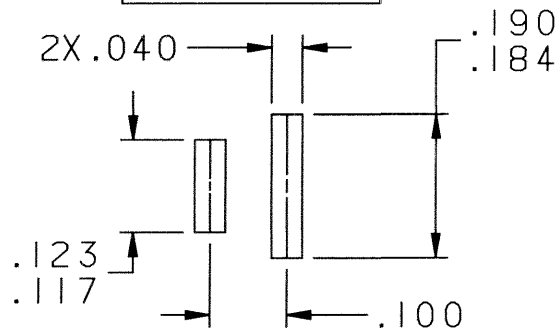
4

3

2

1

RECOMMENDED MOUNTING SLOT SIZES

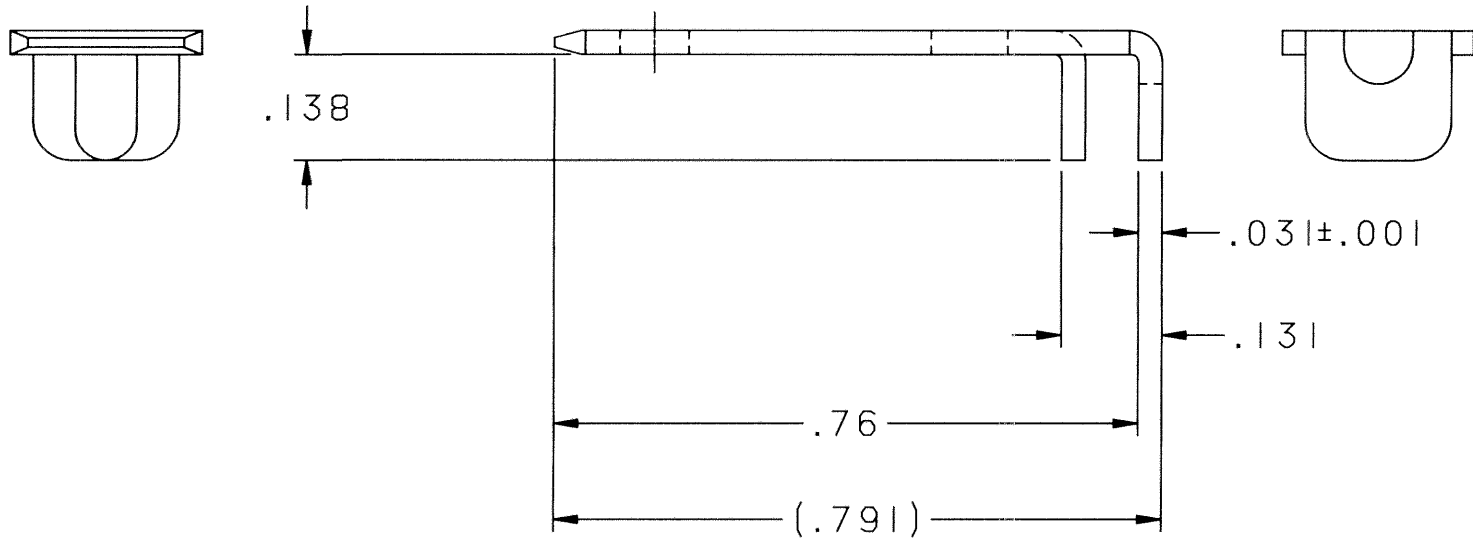
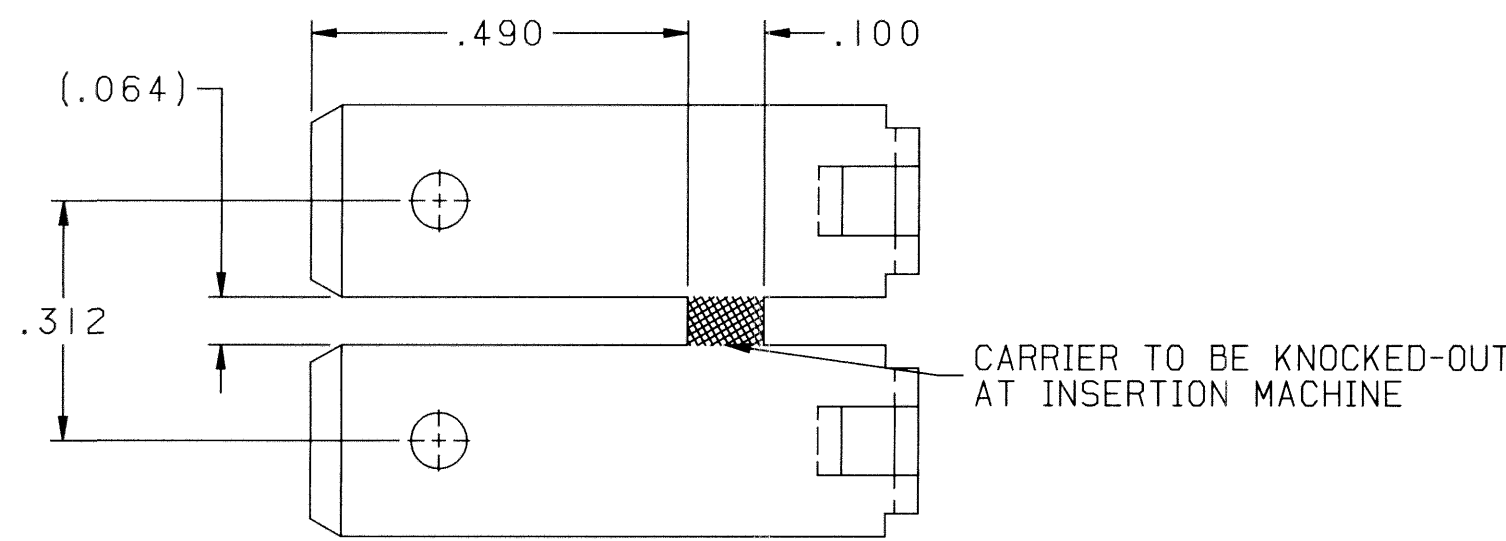
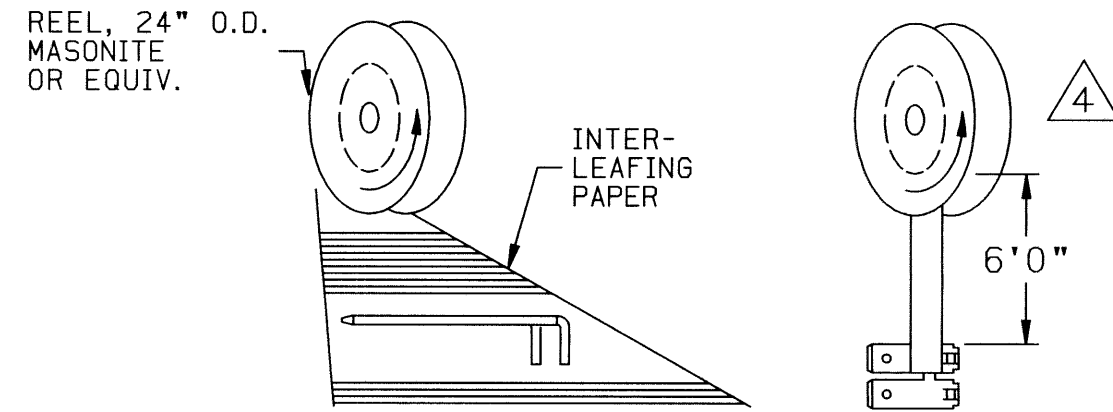


CUSTOMER DRAWING

This drawing and the information set forth hereon are the property of Autossplice, Inc. and are to be held in trust and confidence. Publication, duplication, disclosure, or use for any purpose not expressly authorized in writing by Autossplice, Inc. is prohibited.

DATE	SYM	REVISION RECORD	AUTH.	DR.	CK
12-13-95	A	INITIAL RELEASE ECN NO. 13875		MM	JB

WINDING INSTRUCTIONS



- NOTES: UNLESS OTHERWISE SPECIFIED
- INTERPRET DRAWING IN ACCORDANCE WITH ANSI Y14.5-1982.
  - PART TO BE SUPPLIED ON A CONTINUOUS REEL AS SHOWN.
  - QUANTITIES PER REEL: 2,500 - 5,000 PIECES.
  - 6' PLASTIC STRIP TO BE SECURELY FASTENED BETWEEN END OF MATERIAL AND SPOOL AS SHOWN.

5. 7-23540-8-□  
 VARIATION  
 1 = AS IS (REELED)  
 2 = LOOSE, PIECE

**autossplice**® AUTOSPLICE INC.  
 10121 Barnes Canyon Road  
 San Diego, California 92121  
 (619) 535-0077

MATERIAL COPPER ALLOY	TOLERANCES (EXCEPT AS NOTED) DIMS IN INCHES DECIMAL: XX ±.02 XXX ±.005	THIRD ANGLE PROJECTION 	DRAWN BY MEJIA DATE 10-25-94
FINISH TIN/LEAD PLATING PER SPEC-0001	ANGULAR: ± 3°	TITLE FLAT TERMINAL, HORIZ.	APPROVED BY BIANCA DATE 1-4-95
		SIZE B	FSCM NO. 0AE89
		DRAWING NUMBER C7-23540-8-□	REV. A
		SCALE: 4:1	CAD FILE NO. SAME AS DRW NO. AND REV.
			SHEET 1 OF 1

4

3

2

1

D

D

C

C

B

B

A

A