

4

3

2

1

NOTES: UNLESS OTHERWISE SPECIFIED

- 1. INTERPRET DRAWING IN ACCORDANCE WITH ANSI Y14.5M-1982.
- 2. MATERIAL: C21000 BRASS, EXTRA SPRING TEMPER, .0310±.0005 UNPLATED STOCK THICKNESS, PER AUTOSPlice SPEC-0009.
- 3. FINISH: POST-PLATED 120-200 μ" 100% TIN OVER 50-100 μ" NICKEL PER AUTOSPlice SPEC-0044.
- 4. ALL DIMENSIONS APPLY AFTER PLATING.
- 5. .003 MAX BLANKING BURR PERMISSIBLE, BURRS NOT TO EXCEED THE SPECIFIED FEATURE TOLERANCE. BURR SIDE FACES HUB.
- 6. .001 MAX BURRS, IN DIE DIRECTION, WHERE NOTED.
- 7. .005 MAX RADII & FILLETS PERMISSIBLE ON ALL CORNERS.
- 8. PITCH CONSISTENCY NOT TO EXCEED ±.005 WHEN THE OAL OF 5 STRIPS, 4 CONTACTS LONG ARE MEASURED.
- 9. CAMBER NOT TO EXCEED .06, TWIST NOT TO EXCEED 18° OVER 18 INCHES.
- 10. QUANTITY OF PARTS PER REEL: 20,000 ONE BREAK NOT LESS THAN 25% OF REEL CAPACITY AND NO SPLICES ALLOWED WITHIN A REEL. NO TAPE TO BE USED ON REEL.

REV	REVISION RECORD	ECN	BY	APVD	DATE
X1	NEW RELEASE	-	RJB	RJB	8/13/2013
A	NEW RELEASE	506704	RJB	RJB	11/22/2013

F

E

D

C

B

A

F

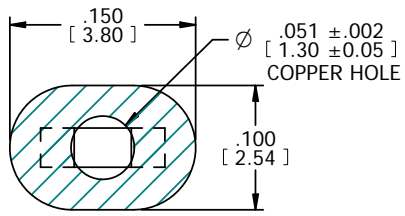
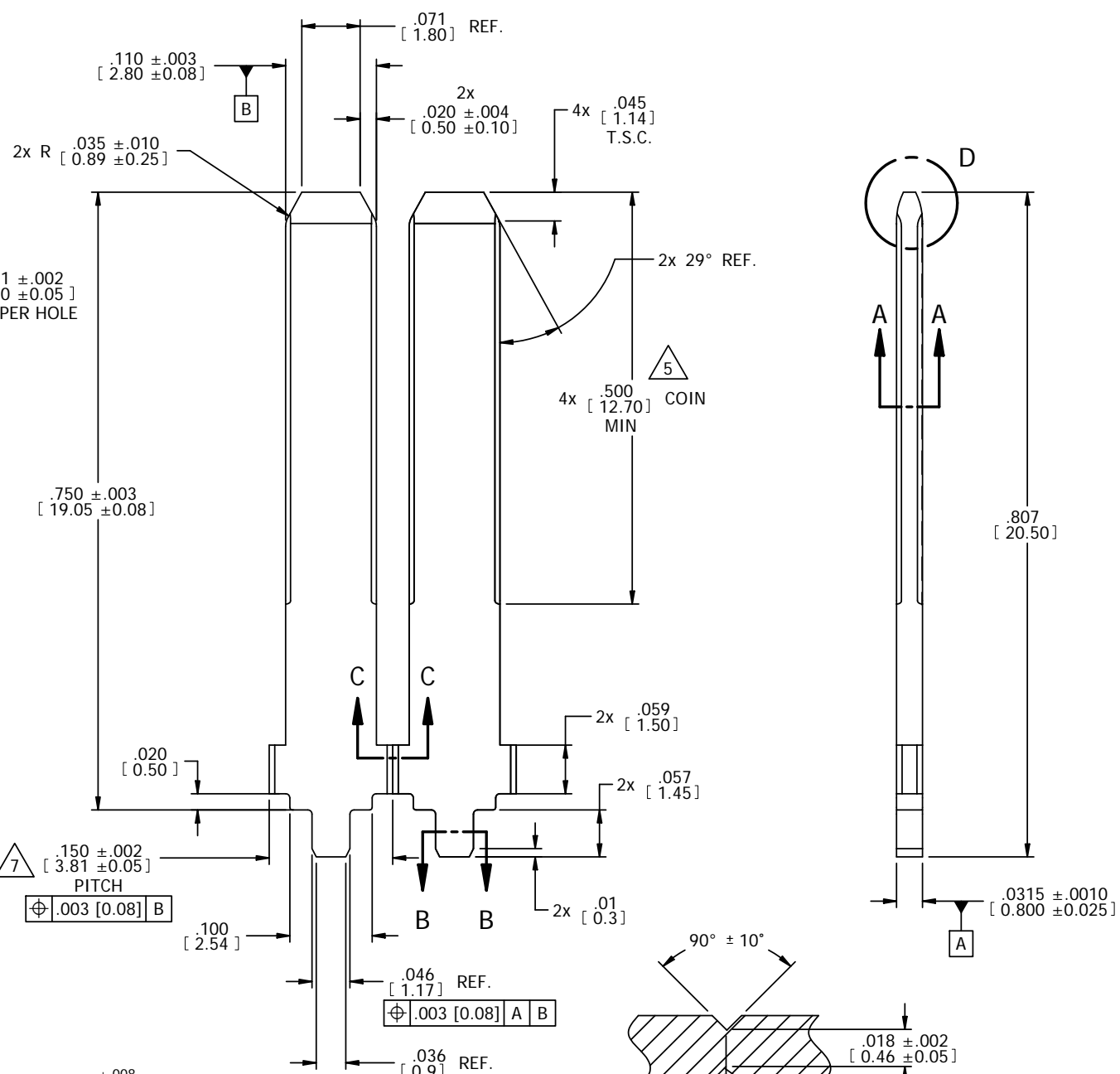
E

D

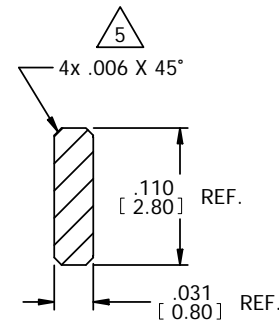
C

B

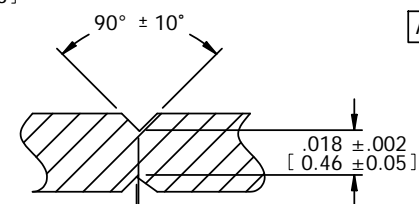
A



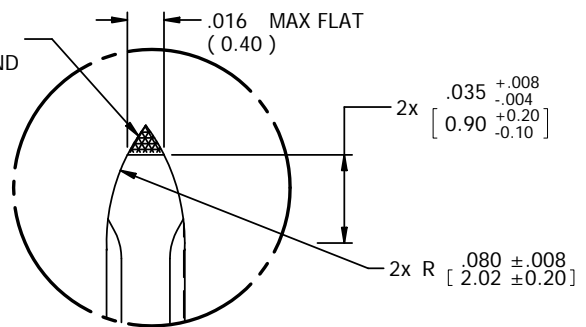
SECTION B-B



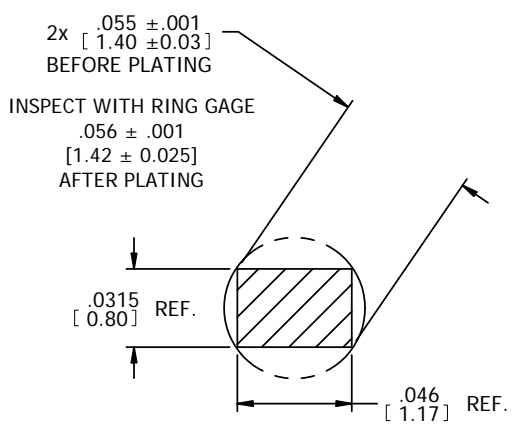
SECTION A-A 10:1



SECTION C-C

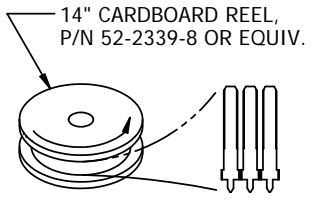


DETAIL D 20:1



SECTION B-B 20:1

9 REELING ORIENTATION



CONFIDENTIAL CUSTOMER DRAWING

The drawing and the information set forth hereon are the property of Autossplice, Inc. and are to be held in trust and confidence. Publication, disclosure, or use for any purpose not expressly authorizing in writing by Autossplice, Inc. is prohibited.

MATERIAL: 2
FINISH: 3

TOLERANCES UNLESS OTHERWISE SPECIFIED DIMENSIONS IN [] ARE IN []	
DECIMAL	XX = ±.01
[X.X]	±[0.3]
[XX]	±.005
[X.XX]	±[0.13]
ANGULAR	±.3°
ITEM NUMBERS FOR INSPECTION	XX
◇	DENOTES SPECIAL CHARACTERISTIC

autossplice		Autossplice, Inc. 10121 Barnes Canyon Rd. San Diego, CA 92121-2725 858-535-0077	
THIRD ANGLE PROJECTION	DRAWN BY: BADGER	DATE: 8/13/13	REVISION: A
ENGINEERED BY: BADGER	DATE: 8/13/13	TITLE: VERTICAL TERMINAL, .110	
SIZE: C	FSCM NO: OAE89	DRAWING NUMBER: C7-V1114-010TT	REVISION: A
SCALE: 2:1	SAD NO: C7-V1114-010TTa.dft	MODEL NO: 7-V1114.par	SHEET 1 OF 1