

NOTES: UNLESS OTHERWISE SPECIFIED

1. INTERPRET DRAWING IN ACCORDANCE WITH ANSI Y14.5-1982.

2. PART TO BE SUPPLIED ON A CONTINUOUS REEL AS SHOWN. ONE BREAK AND NO SPLICE ALLOWED PER REEL.

3. QUANTITY OF PARTS PER REEL: SEE TABLE.

4. ALL DIMENSIONS APPLY AFTER PLATING.

5. SOLDERABILITY PER IPC/EIA/JEDEC J-STD-002, TEST A, CAT. 3.

PART NUMBER BREAKDOWN

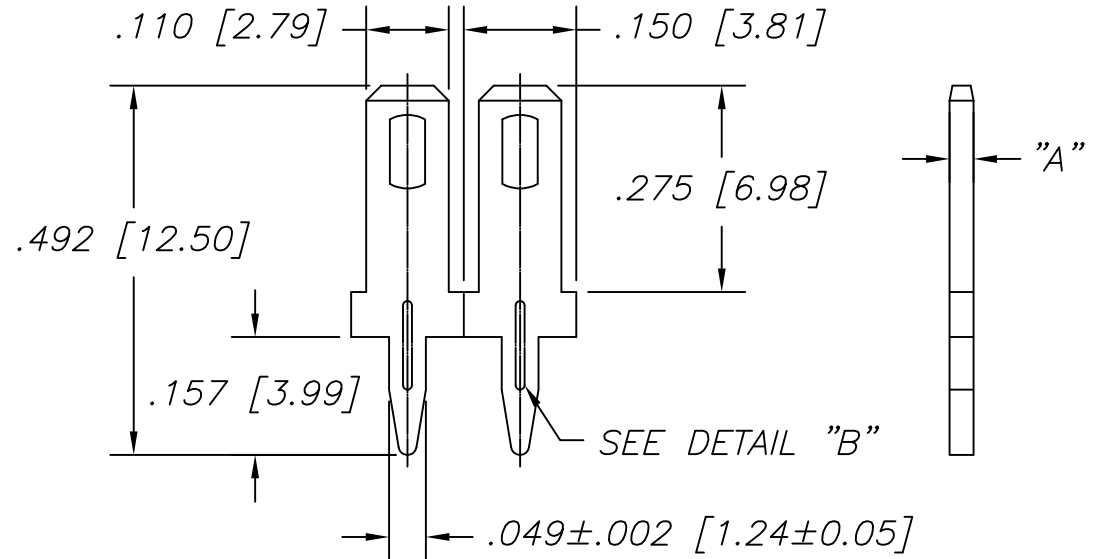
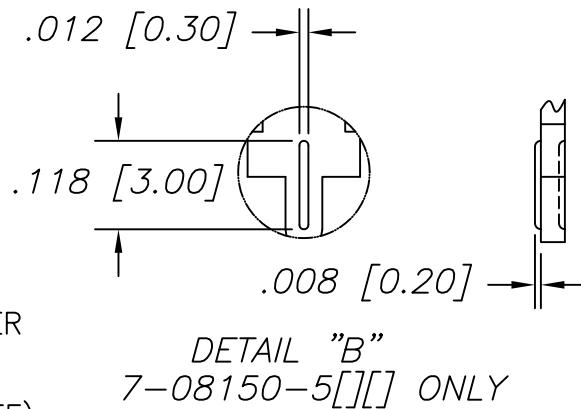
7-08150-

TYPE TAB FINISH: POST PLATED

"OMIT STD" = .000120" MIN. 90/10 TIN-LEAD OVER .000050" MIN. NICKEL.

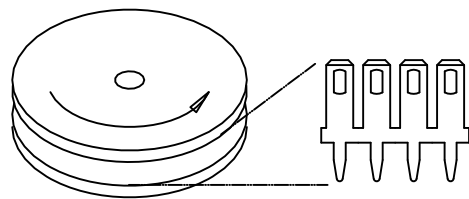
THICKNESS TT = .000160" NIM. MATTE TIN (LEAD FREE) OVER .000080" MIN. NICKEL. (RoHS COMPLIANT)

5 = .020
8 = .031



PART NO.	FINISH	QTY/REEL	DIM. "A" (MATERIAL THICKNESS)	RECOMMENDED DRILL SIZE	RECOMMENDED COPPER PLATING	RECOMMENDED FINISHED PTH
7-08150-5	"STD"	17,000 PCS	.020±.002[0.51±0.05]	.052±.001[1.32±0.03]	.048±.002[1.22±0.05]	.047±.002[1.19±0.05]
7-08150-5TT	"TT"					
7-08150-8	"STD"	14,000 PCS	.031±.002[0.79±0.05]	.057±.001[1.45±0.03]	.052±.002[1.32±0.05]	.052±.002[1.32±0.05]
7-08150-8TT	"TT"					

2 3 WINDING INSTRUCTION



CUSTOMER DRAWING

This drawing and the information set forth hereon are the property of Autossplice, Inc. and are to be held in trust and confidence. Publication, duplication, disclosure, or use for any purpose not expressly authorized in writing by Autossplice, Inc. is prohibited.

TOLERANCES UNLESS OTHERWISE SPECIFIED

DIMS IN INCHES [MM]

DECIMAL:
XX = $\pm .02$
 $\pm [0.5]$

XXX = $\pm .010$
 $\pm [0.25]$

ANGULAR:
 $\pm 3^\circ$

autossplice © AUTOSPLICE INC.
10121 Barnes Canyon Road
San Diego, California 92121
(619) 535-0077

THIRD ANGLE PROJECTION

DRAWN BY **MNH** DATE 07-15-98
ENGINEERED BY **MNH** DATE 07-15-98

TITLE: **AUTOTAB TERMINAL**

SIZE **B** FSCM NO. **0AE89** DRAWING NUMBER **C7-08150-** REVISION **C**

SCALE: 4:1 CAD FILE NO. C7-08150-b.DWG SHEET 1 OF 1

REV	REVISION RECORD	ECN	BY	APVD	DATE
A	INITIAL RELEASE	15636	MNH	JB	07-15-98
B	ADDED "TT" PLATE PER EWR 104972	504436	RJB	PVB	03-21-06
C	ANGLE TOLERANCE CHANGE	506898	JH	KS	10-03-14