

4

3

2

1

NOTE: UNLESS OTHERWISE SPECIFIED

1. INTERPRET DRAWING IN ACCORDANCE WITH ANSI Y14.5-1982.
2. REMOVED
3. PITCH CONSISTENCY TO BE WITHIN ± 0.005 , WHEN THE OAL OF 5 STRIPS, 3 INCHES LONG ARE MEASURED.
4. PART TO BE SUPPLIED ON A CONTINUOUS REEL.
5. ALL DIMENSIONS APPLY AFTER PLATING.

REV	REVISION RECORD	ECN	BY	APVD	DATE
A	RELEASED	14827	JMc	JB	05-30-97
B	PER ECN 16094.	16094	CVD	JB	1-23-98
C	UPDATES PER ECN 501811	501811	RJB	RJB	10-23-01

PART NUMBER BREAKDOWN

0 = UNDER 1 INCH OAL.
1 = OVER 1 INCH OAL.

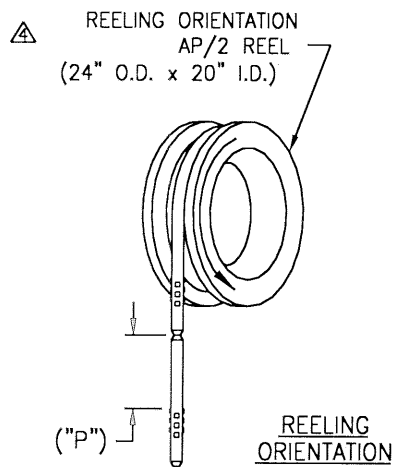
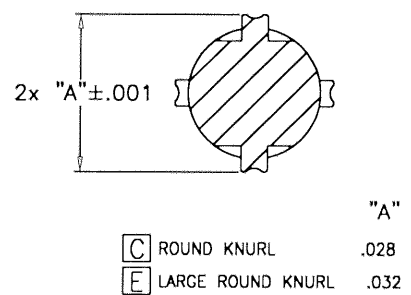
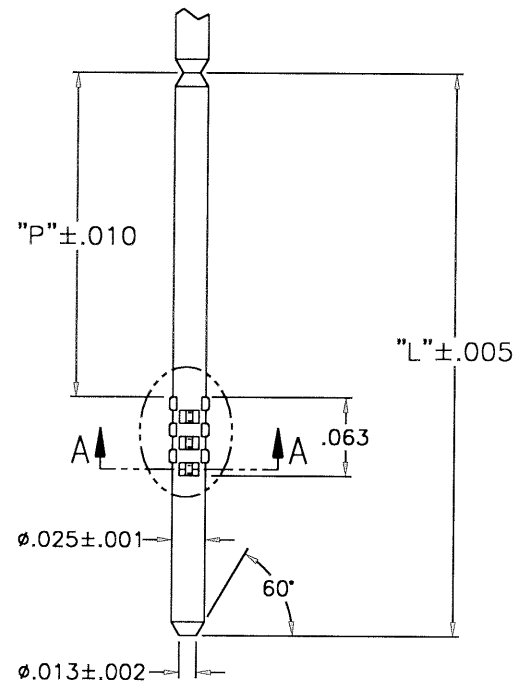
PIN SIZE: 8-25

PIN LENGTH "P" ABOVE KNURL

PIN TYPE (SEE DETAIL):
C ROUND KNURL (FOR PLASTIC)
E LARGE ROUND KNURL (FOR PCB)

MATERIAL:
1 = C10200 COPPER ALLOY, FULL HARD
2 = C26000 BRASS, 3/4 HARD
5 = C51000 PHOSPHOR BRONZE, 3/4 HARD
7 = C72000 COPPER/NICKEL/TIN ALLOY

FINISH VARIATIONS:
AA = TIN/LEAD .000120 MIN OVER NICKEL
BB = GOLD PLATE .000005 OVER NICKEL
CC = GOLD PLATE .000010 OVER NICKEL
WW = GOLD PLATE .000015 OVER NICKEL
DD = GOLD PLATE .000020 OVER NICKEL
EE = GOLD PLATE .000030 OVER NICKEL
NN = NICKEL PLATE .000050
FF = GOLD .000003 OVER PALLADUM/NICKEL .000012 OVER NICKEL.
RR = UNPLATED.



CUSTOMER DRAWING

This drawing and the information set forth hereon are the property of Autossplice, Inc. and are to be held in trust and confidence. Publication, duplication, disclosure, or use for any purpose not expressly authorized in writing by Autossplice, Inc. is prohibited.

TOLERANCES UNLESS OTHERWISE SPECIFIED DIMS IN INCHES
 DECIMAL: XX = $\pm .01$, XXX = $\pm .005$
 ANGULAR: $\pm 3'$

autossplice ® AUTOSPLICE INC.		AUTOSPLICE INC. 10121 Barnes Canyon Road San Diego, California 92121 (619) 333-0077	
DESIGNED BY: J Mc	DATE: 05-30-97	ENGINEERED BY: BIANCA	DATE: 05-30-97
TITLE: AUTOPIN/2 DETAIL PART DRAWING			
SIZE: C	PCH NO: OAE89	DRAWING NUMBER: C8-25C&E	REVISION: C
SCALE: NONE	CAD FILE NO: C8-25CEXXX.DWG	SHEET 1 OF 1	

4

3

2

1