

4

3

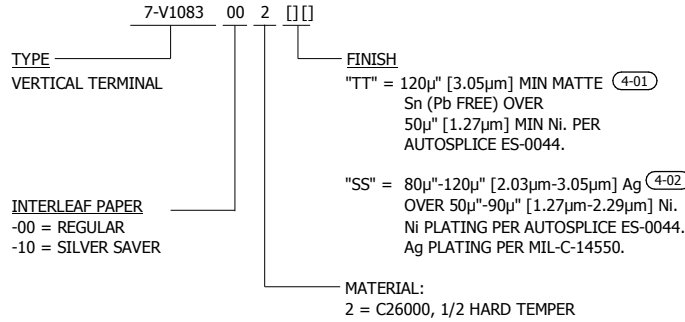
2

1

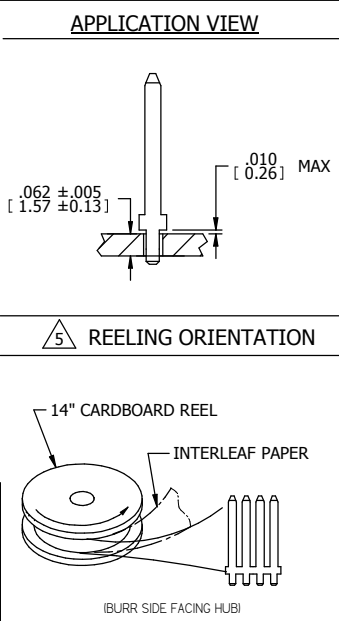
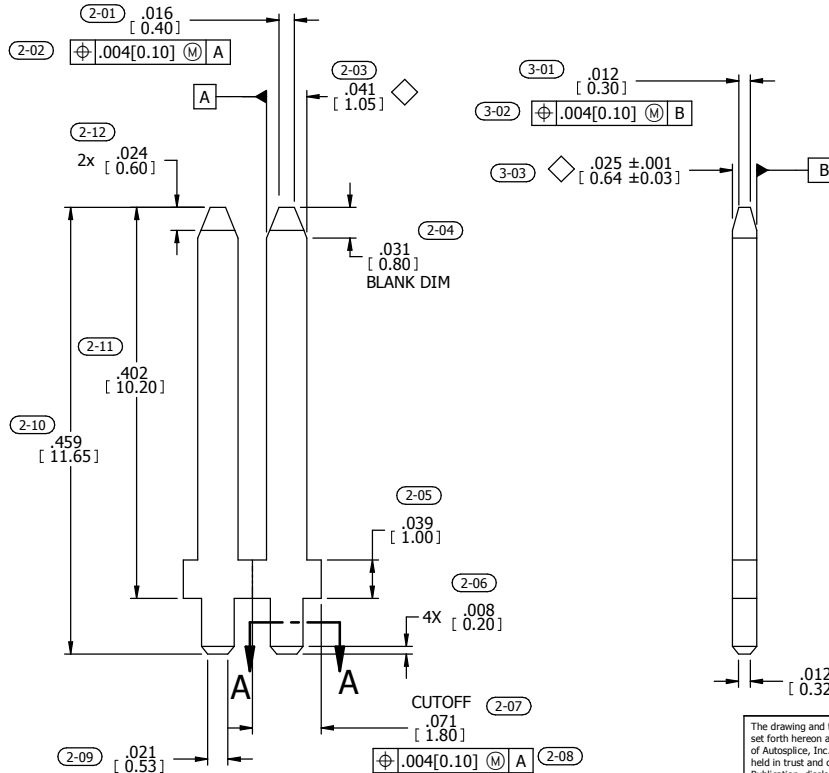
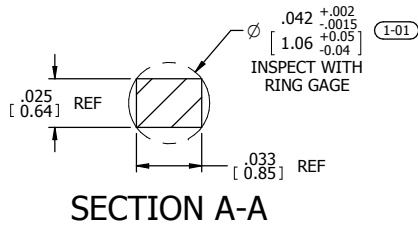
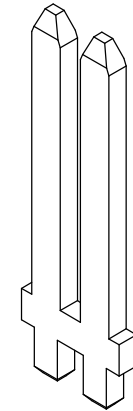
NOTES: UNLESS OTHERWISE SPECIFIED.

1. INTERPRET DRAWING IN ACCORDANCE WITH ASME Y14.5-2009. (5-01)
2. ALL DIMENSIONS APPLY AFTER PLATING. (5-02)
3. .003 [0.08] MAX BLANKING BURR PERMISSIBLE, BURRS MUST NOT EXCEED SPECIFIED FEATURE TOLERANCE. BURR SIDE FACES HUB. (5-03)
4. .005 [0.13] MAX RADII ARE PERMISSIBLE ON ALL CORNERS. (5-04)
5. PART TO BE SUPPLIED ON A CONTINUOUS REEL AS SHOWN. NO SPLICES ALLOWED. THE QUANTITY OF PARTS PER REEL SHALL BE 30,000. (5-05)
6. 8. RECOMMENDED PTH HOLE SIZE: (5-06)
 8a DRILL: $\varnothing .0410 \pm .0010$
 Cu Hole (.0008-.0015" per side): $\varnothing .039 \pm .002$
 Ni Hole (.0001-.00015" per side): $\varnothing .039 \pm .002$
 Au Hole (.000004-.000010" per side): $\varnothing .039 \pm .002$
 8b DRILL: $\varnothing .0420 [1.067]$ REF
 COPPER: $\varnothing .039 \pm .002 [1.00 \pm 0.05]$
 SnPb: $\varnothing .038 \pm .003 [0.96 \pm .08]$

PART NUMBER / ORDERING CODE



REV	REVISION RECORD	ECN/ECO	BY	APVD	DATE
X3	Increase PTH TOLERANCE	-	JB	JB	8/26/2003
A	INITIAL RELEASE PER EWR 103235	503012	JB	JB	11/18/2003
B	ADDED PTH PER EWR 103910	503391	BLLL	JB	6/4/2004
C	REMOVE SCORE LINE PER EWR106002	505428	HR	PVB	6/17/2008
D	ADDED "SS" VERSION	103-01	KR	KR	2/11/2016



MATERIAL:
PIN: COPPER ALLOY
FINISH:
 SEE PART NUMBER ORDERING CODE

CONFIDENTIAL
CUSTOMER DRAWING

TOLERANCES UNLESS OTHERWISE SPECIFIED DIMENSIONS IN SQUARES ARE IN INCHES

autosplice
 Autosplice, Inc.
 10431 Wateridge Circle, Suite 110
 San Diego, CA 92121-5703
 858-532-9077

THIRD ANGLE PROJECTION

DATE: 08-12-03
 DRAWN BY: BIANCA
 ENGINEERED BY: BIANCA
 TITLE: VERTICAL TERMINAL, 1.05mm

ITEM NUMBERS FOR INSPECTION: (XXX) (XXX) (XXX) (XXX) (XXX)

SCALE: 1:1
 PART NO: C7-V1083-02 [] []
 MODEL NO: 7-V1083-0027T.dwg
 SHEET 1 OF 1

4

3

2

1