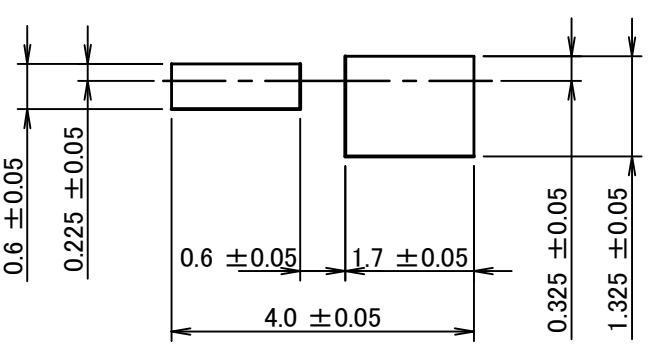
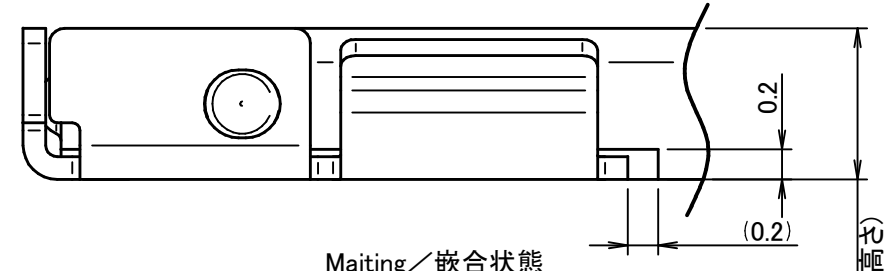
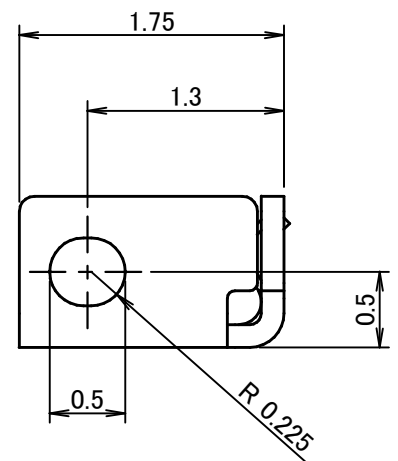
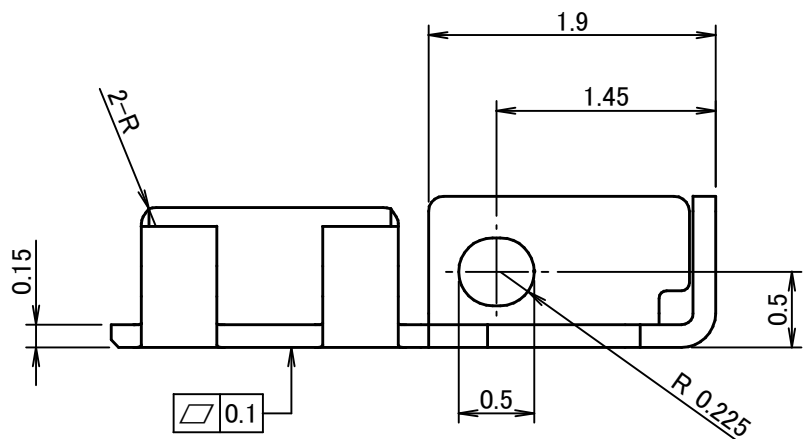
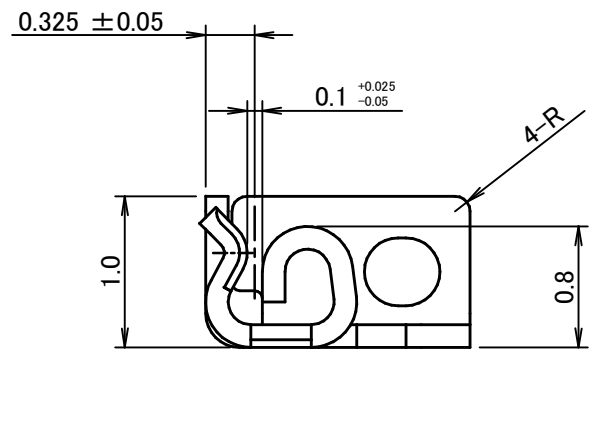
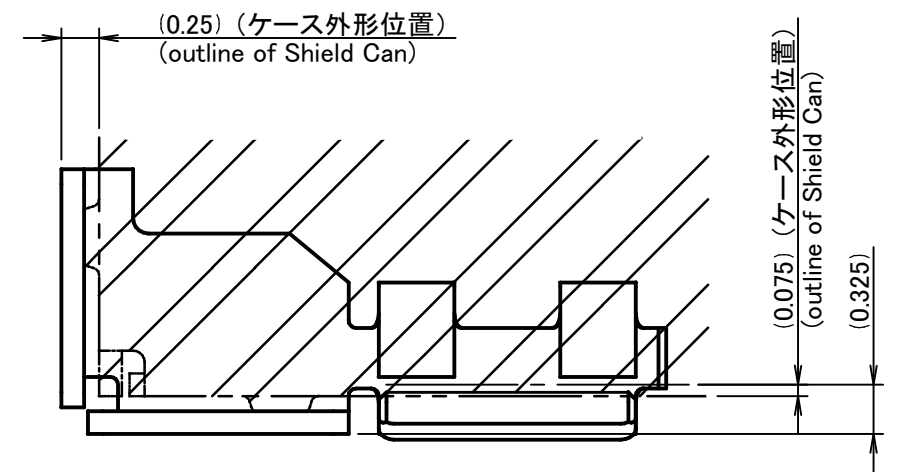
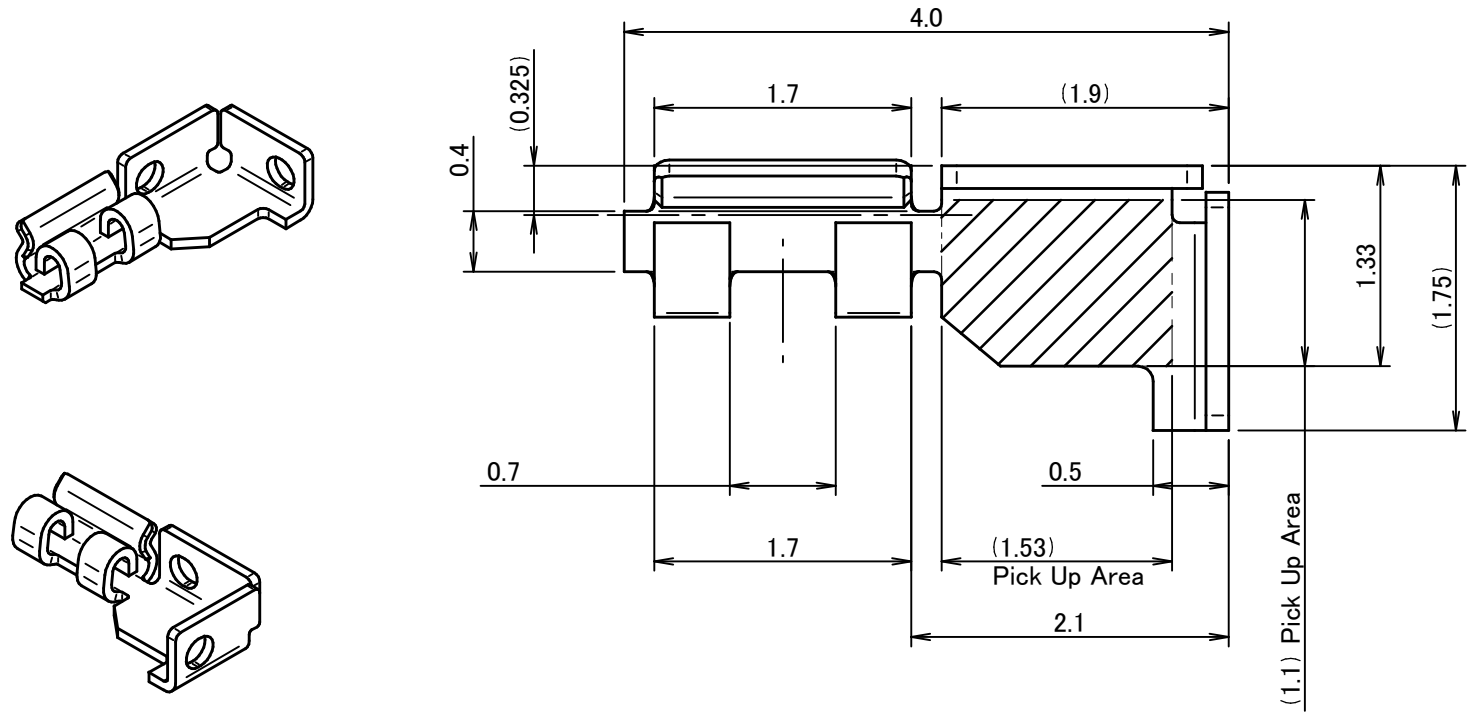
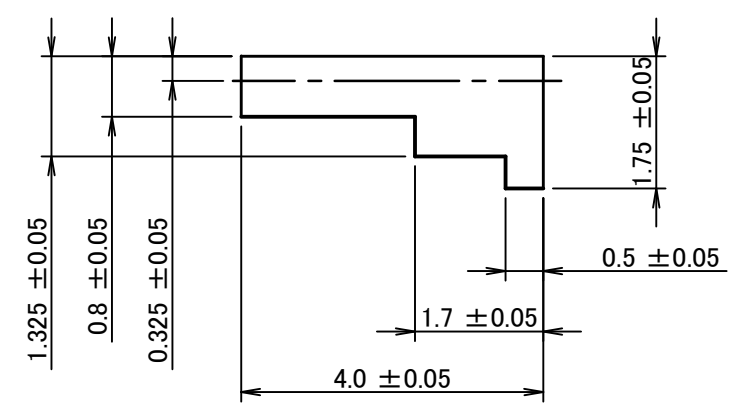


REV	A/S SD REVISION RECORD	ECN	BY	APVD	DATE
A	INITIAL US RELEASE PER EWR 107848	506616	RJB	VN	04/02/13

REV	CRR No.	DESCRIPTION	APPVD BY	DATE
A		First Release	TAKAHASHI	2012/09/17
B				
C				
D				



Recommended Metal Mask hole size
参考メタルマスク開口部寸法



Recommended pad size
参考ランドパターン寸法

- 【Note】
 1. Material: Hyper Phosphor Bronze Alloys C5240R-H thickness=0.15
 2. Finish: Tin(1.3 μm Min.) over Nickel(1.5 μm Min.)
 3. Pre-plating
 4. Recommended shield thickness: 0.15 ± 0.02
 5. All dimension apply after plating.

- 【注記】
 1. 材料: ハイパーリン青銅 C5240R-H t=0.15
 2. 表面処理: Niめっき(1.5 μm以上)上 Snめっき(1.3 μm以上)
 3. 破断面にめっきはつかない(材料めっき)
 4. シールドケース推奨板厚: 0.15 ± 0.02
 5. 寸法はめっき後寸法である。

-THE SUPPLIED PART IS RoHS COMPLIANCE- RoHS対応品

This drawing and the information set forth herein are the property of Autossplice and are to be held in trust and confidence. Publication, duplication, disclosure or use for any purpose not expressly authorized in writing by Autossplice is prohibited.		AUTOSPLICE JAPAN CO LTD. 3-7-39 Minami-cho Higashikurume-shi Tokyo 203-0031 Japan	
3rd ANGLE PROJECTION		DRAWING BY: Togami	DATE: 2012/09/17
GENERAL TOLERANCE OTHERWISE SPECIFIED ALL DIM IN METRIC(INCHES)		APPRD BY: TAKAHASHI	DATE: 2012/09/17
DECIMAL ± 0.1	ANGLES ± 2°	TITLE: Corner Clip / コーナークリップ	
SIZE A3	FSCM No. N.A.	PART No.: 7-86-70002	REV. A
SCALE: 20:1		DRAWING FILE: 7-86-70002S.dft	SHEET 1 of 1