



MultiSert

TECHNICAL DATASHEET

WITH REAL TIME INSERTION
FORCE MONITORING

FLEXIBLE INSERTION SYSTEM

Multisert^{XS} is the culmination of over 50 years experience, servicing the automotive, telecommunications, medical and industrial market needs for applied interconnects.

SYSTEM OPTIONS

- Programmable rotary stage (0-360 degrees)
- Real time insertion force monitoring
- Top or bottom view bar code scanners
- CE Conformity

PRODUCT FEATURES

- Insertion rates up to 3 per second on .2" (5.08 mm) pitch
- Up to 2 insertion heads
- 18" x 18" Insertion area (457 mm x 457 mm)
- Accuracy +/- .0001"
- Vision system for PCB error correction
- PCB anvil support
- Touch screen monitor
- Windows 7 operating system
- SMEMA interface
- Interlocked enclosure with light curtain
- Component end of reel sensors
- Optional continuity sensor
- Inserts solid press fit and solderless components

MULTISERT^{XS} SPECIFICATIONS

VISION SYSTEM

Multisert^{XS} comes complete with our standard vision system that detects and corrects board error and skew.

Additionally, a scan-all function allows for complete sequencing through the entire program to verify and correct all programmed insertion locations.

COMPONENTS

MultiSert^{XS} machine is compatible with the entire family of tooled components in solid press-fit and compliant (solderless) technology.

Solderless components are available in many pin and blade sizes.

Continuous reeled pins are available in every size and length, as well as with unique features.

MODULAR INSERTION HEADS

We carry more than a dozen of various insertion heads designed for each component. We also offer the development of unique heads and tooling specifically for your project.

Our modular insertion head technology allows for quick application tooling changeover and maintenance.

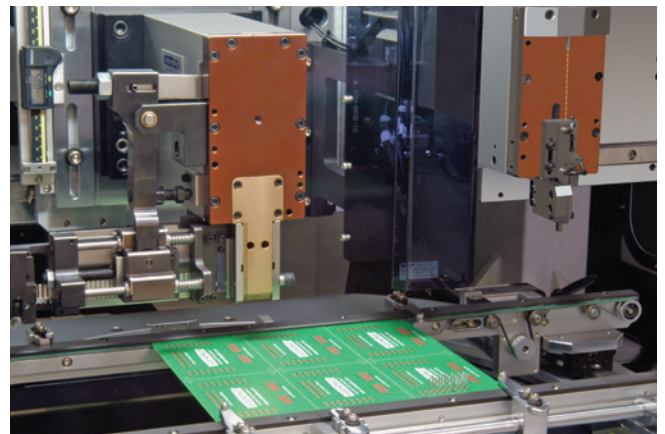
USER INTERFACE

MultiSert^{XS} machine features user-friendly Windows 7 operating system with touch screen display and USB port for optional keyboard. It is very easy to program and use.

SERVO POWER

Multisert^{XS} is fully powered via servo motors, resulting in high speed, precision component placement and maximized output.

It includes: 1. X-Y positioning table; 2. Insertion heads; 3. PCB anvil support; 4. Rotary table; 5. Automatic head changer



Dual Insertion Head with Vision System

AUTHORIZED DISTRIBUTOR



Casey Donovan | 800.325.0534 | cdonovan@keiconn.com