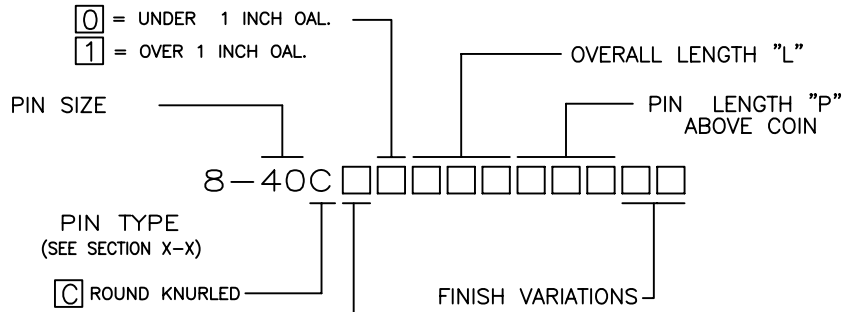


REV	REVISION RECORD	ECN	BY	APVD	DATE
A	INITIAL RELEASE PER EWR 980196	15475	JB	JB	05-15-98
B	UPDATE PER EWR 100819	501049	RJB	RJB	11-00-00
C	UPDATE PER EWR 106570	505814	RJB	RJB	7-18-09

NOTE: UNLESS OTHERWISE SPECIFIED

1. INTERPRET DRAWING IN ACCORDANCE WITH ANSI Y14.5-1982.
 2. ALL DIMENSIONS APPLY AFTER PLATING.
 3. PITCH CONSISTENCY TO BE WITHIN ± 0.005 WHEN THE OAL OF 5 STRIPS, (3.00") LONG ARE MEASURED.
- ⚠ PART TO BE SUPPLIED ON A CONTINUOUS REEL.

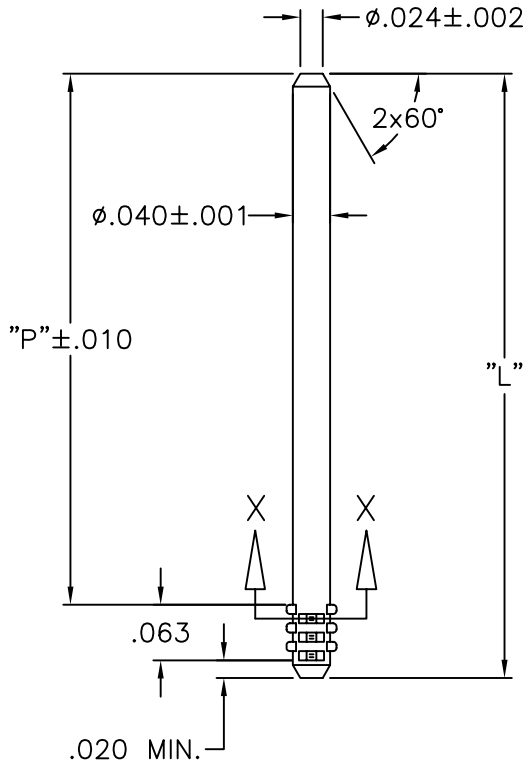
PART NUMBER BREAKDOWN



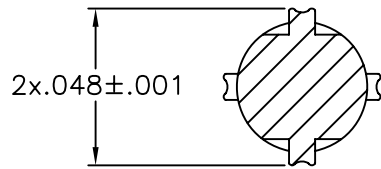
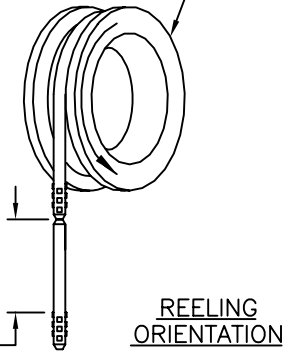
MATERIAL

- 1 = C10200 COPPER ALLOY, FULL HARD
- 2 = C26000 BRASS, 3/4 HARD
- 5 = C51000 PHOSPHOR BRONZE, 3/4 HARD
- 7 = C72000 COPPER/NICKEL/TIN ALLOY

- AA = TIN/LEAD .000120 MIN OVER NICKEL
- BB = GOLD PLATE .000005 OVER NICKEL
- CC = GOLD PLATE .000010 OVER NICKEL
- WW = GOLD PLATE .000015 OVER NICKEL
- DD = GOLD PLATE .000020 OVER NICKEL
- EE = GOLD PLATE .000030 OVER NICKEL
- NN = NICKEL PLATE .000050
- FF = Au .000003 OVER Pd-Ni .000012 OVER Ni
- RR = UNPLATED



⚠ REELING ORIENTATION
AP/2 REEL
(24" O.D. x 20" I.D.)



SECTION X-X

CUSTOMER DRAWING

This drawing and the information set forth herein are the property of Autossplice, Inc. and are to be held in trust and confidence. Publication, duplication, disclosure, or use for any purpose not expressly authorized in writing by Autossplice, Inc. is prohibited.

TOLERANCES UNLESS OTHERWISE SPECIFIED DIMS IN INCHES DECIMAL: XX = ± .01 XXX = ± .005 ANGULAR: ± 3°			AUTOSPlice INC. 10121 Barnes Canyon Road San Diego, California 92121 (619) 535-0077
	THIRD ANGLE PROJECTION 	DRAWN BY JOE APPROVED BY BIANCA	DATE 3-15-98 DATE 5-15-98
TITLE AUTOPIN/2 DETAIL PART DRAWING			
SIZE C FSCM NO. 0AE89 SCALE: NONE	DRAWING NUMBER C8-40C	DENOTES SPECIAL CHARACTERISTIC 	REV. C CAD FILE NO. 08-40C000C SHEET 1 OF 1