

4

3

2

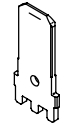
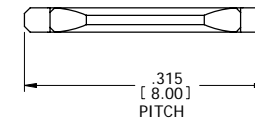
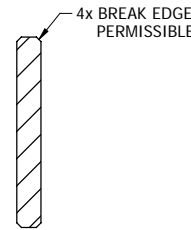
1

NOTES: UNLESS OTHERWISE SPECIFIED

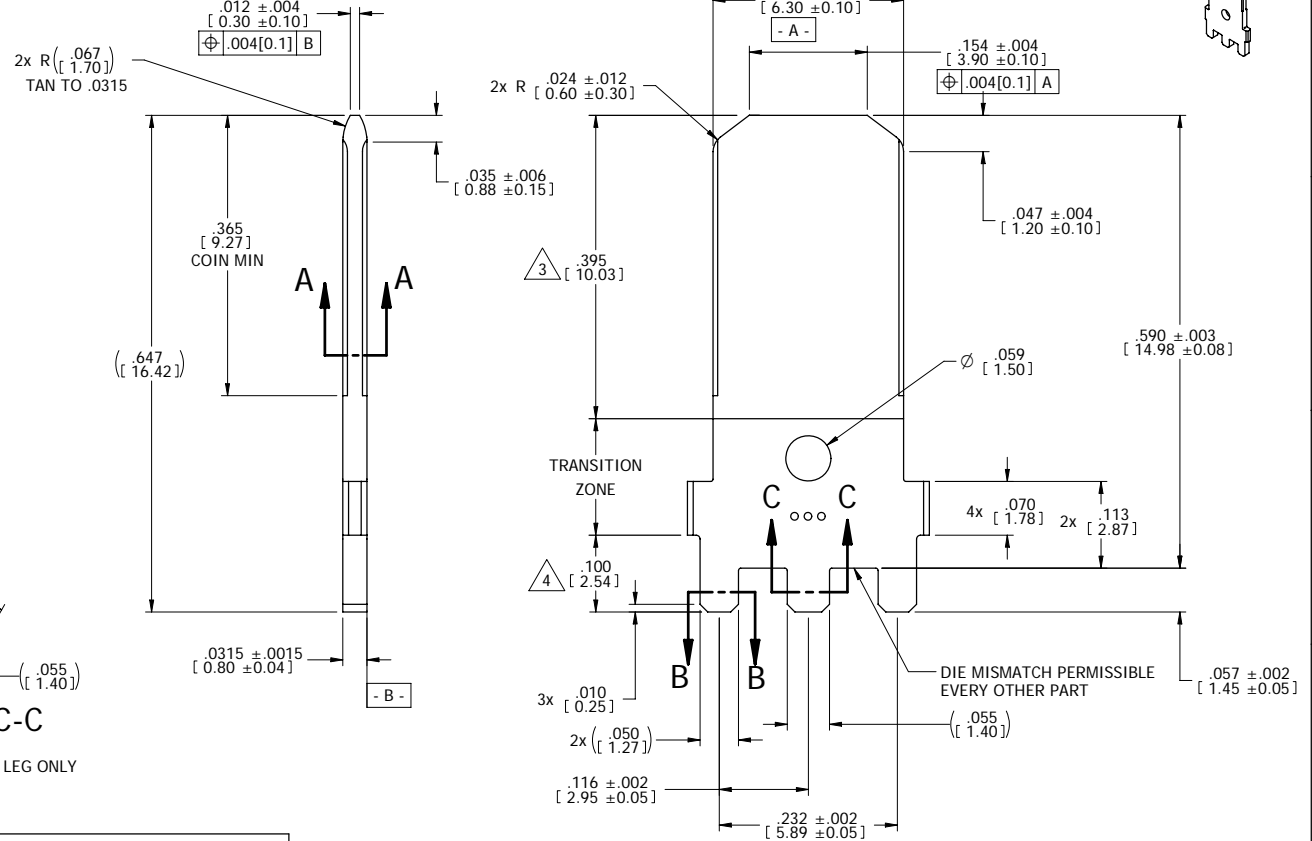
1. INTERPRET DRAWING IN ACCORDANCE WITH ASME Y14.5-1994.
2. MATERIAL: C11000 COPPER ALLOY, HARD TEMPER.
3. PLATING: POST-PLATED IN AREA INDICATED .000030" - .000060" [0.00076] - [0.0015] 100% MATTE Sn, OVER .000050" [0.0013] MIN Ni.
4. PLATING: POST-PLATED IN AREA INDICATED .000120" [0.0030] MIN 100% MATTE Sn, OVER .000050" [0.0013] MIN Ni.
5. BLANKING BURRS MUST NOT EXCEED .003 [0.08] MAX.
6. RADII AND FILLETS NOT TO EXCEED .005 [0.13] MAX.
7. ALL DIMENSIONS APPLY AFTER PLATING.
8. SOLDERABILITY PER IPC/EIA J-STD-002, TEST A, CATEGORY 3.
9. PART TO BE SUPPLIED ON A CONTINUOUS REEL AS SHOWN, ONE BREAK PERMISSIBLE. QUANTITY OF PARTS PER REEL 15,000 ±15%. PACKAGE PER AUTOSPlice SPEC 0049.
10. RECOMMENDED PCB LAYOUT:

DRILL HOLE: ϕ .063 [1.60] REF
 IMMERSION TIN FINISHED Cu HOLE: ϕ .059 ±.002 [1.50±0.051]
 BOTTOM SIDE ANULAR RING: .020 [0.51]

REV	REVISION RECORD	ECN	BY	APVD	DATE
X3	CHNG PTH HOLE WAS .058 +/- .003	-	BILL	DW	03/10/05
A	REL TO PRODUCTION PER EWR 103753	503890	BILL	PVB	05/05/05



SECTION A-A

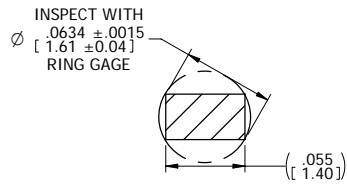
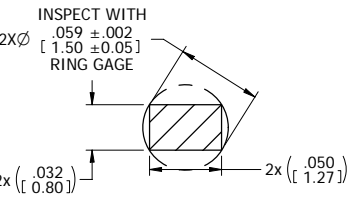
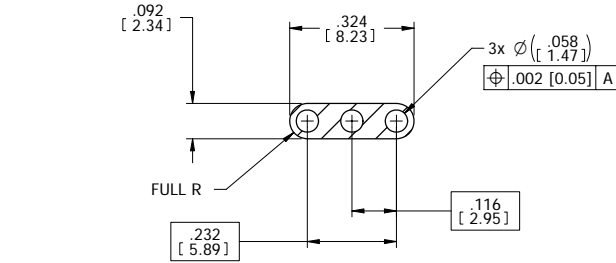


SECTION B-B

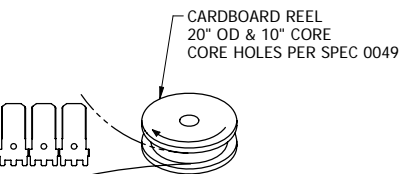
APPLIES TO OUTSIDE LEGS ONLY

SECTION C-C

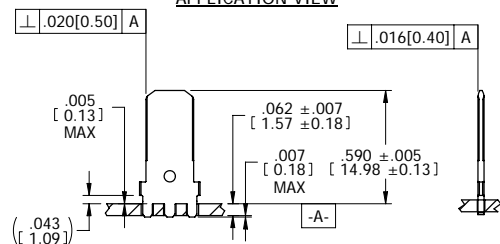
APPLIES TO MIDDLE LEG ONLY



REELING ORIENTATION



APPLICATION VIEW



CUSTOMER DRAWING

The drawing and the information set forth herein are the property of AutosplICE, Inc. and are to be held in trust and confidence. Publication, disclosure, or use for any purpose not expressly authorizing in writing by AutosplICE, Inc. is prohibited.

MATERIAL: SEE NOTE 2
 FINISH: SEE NOTE 3

TOLERANCES UNLESS OTHERWISE SPECIFIED DIMENSIONS IN INCHES (mm)		AutosplICE, Inc. 10121 Barnes Canyon Rd. San Diego, CA 92121-2725 858.585.0077	
DECIMAL: .XX = ±.01 [XX] = ±[0.3]	XXX = ±.005 [XXX] = ±[0.13]	ENGINEERED BY: BIANCA	DATE: 2-8-05
ANGULAR: ± 5°	DIAMETER: ±.001	DESIGNED BY: JOE	DATE: 2-8-05
TITLE: VERTICAL TERMINAL 6.3 mm		DRAWING NUMBER: C7-V1069-001TT	
SIZE: C	SCALE: 8:1	REV: A	SHEET 1 OF 1