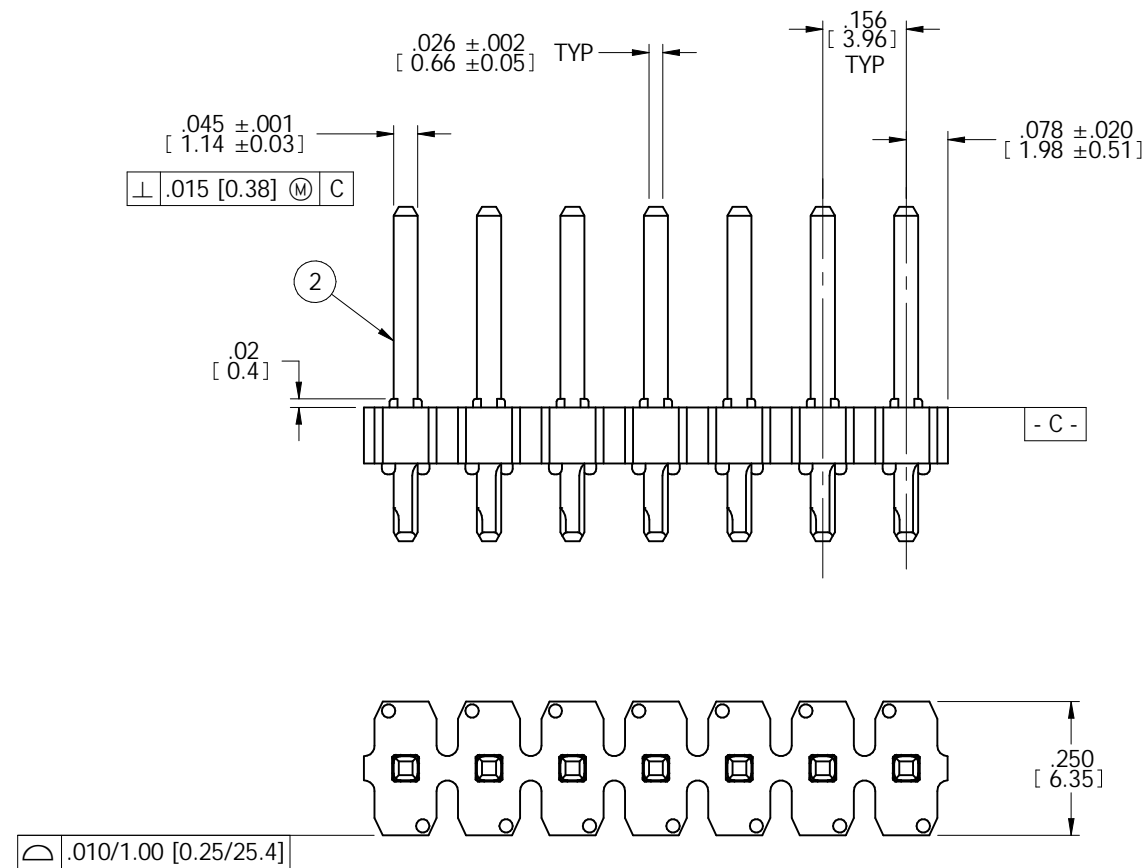


2 5,000 PINS APPROX. PER AUTOHEADER™ REEL. FEEDER COMPATIBLE
SPLICES PERMITTED, 2 SPLICES MAX. PER REEL

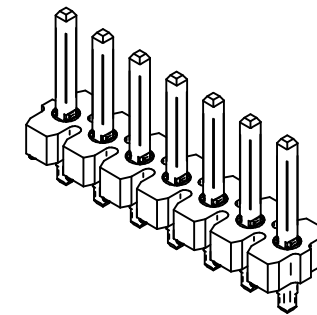
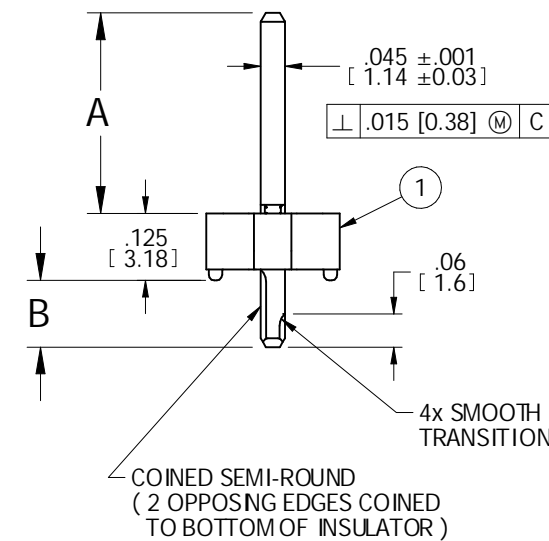
[illegible]

REV	REVISION RECORD	ECN	BY	APVD	DATE
A	RELEASED FOR PRODUCTION	503296	Pete	PVB	04/17/04
B	PIN COINED TO BOTTOM OF INSULATOR ADDED DIM. .06 [1.5]	503571	BILL	PVB	09/27/04
C	ADD TT PLATING PER EWR 105484	505017	HR	PVB	05/31/07

AA	.000120" [3.05 MICRONS] MIN. TIN/LEAD OVER .000050 [1.27 MICRONS] MIN Ni
TT	.000160 [4.06 MICRONS] MIN Sn OVER .000080 [2.03 MICRONS] MIN Ni

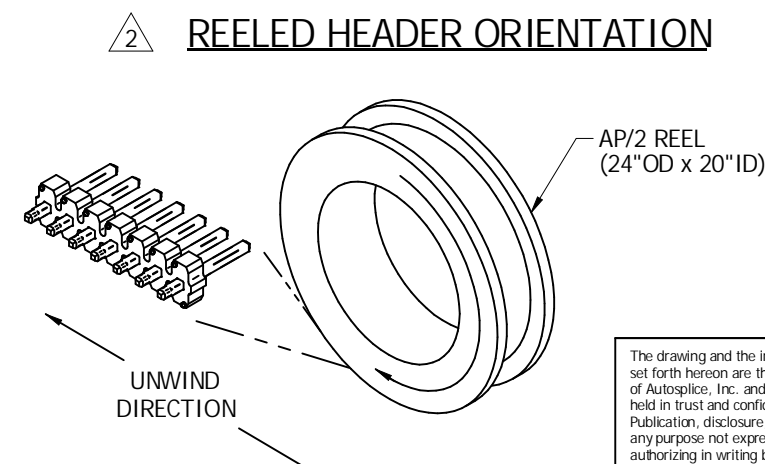
CODE	A	B
A1	.575± .010 [14.61± 0.25]	.125± .010 [3.18± 0.25]
A2	.375± .010 [9.53± 0.25]	

CUSTOM DIMENSIONS ARE AVAILABLE
UPON REQUEST TO FACTORY.






SEE P/N ORDERING CODE
(PIN TIPS BARE AT CUT-OFF)

CUSTOMER DRAWING



The drawing and the information set forth hereon are the property of Autosplice, Inc. and are to be held in trust and confidence. Publication, disclosure, or use for any purpose not expressly authorizing in writing by Autosplice, Inc. is prohibited.

TOLERANCES UNLESS OTHERWISE SPECIFIED: DIMENSIONS IN INCHES (mm)				Autosplice, Inc. 10121 Barnes Canyon Rd. San Diego, CA 92121-2725 RSR-535-0077	
DECIMAL: .XX = ± .01 [X.X] = ± [0.3] .XXX = ± .005 [X.XX] = ± [0.13]	THIRD ANGLE PROJECTION 		DRAWN BY Pete	DATE 07/21/03	
			ENGINEERED BY PVB	DATE 07/21/03	
TITLE AUTOHEADER 1 ROW .156 CTRS. SR.					
ANGULAR: ± 5°	 DENOTES SPECIAL CHARACTERISTIC		SIZE C	PSCM NO 0AE89	DRAWING NUMBER C23-1051
			SCALE: 4:1 C	EAD NO C23-1051	MODEL NO 23-1051asm
			SHEET 1 OF 1		REVISION C