

4

3

2

1

NOTES: UNLESS OTHERWISE SPECIFIED

- 1. INTERPRET DRAWING IN ACCORDANCE WITH ANSI Y14.5 1994.
- 2. MATERIAL: C26000 BRASS 1/2 HARD, .0252+/-0.0006 PREPLATED STOCK THICKNESS.
- 3. FINISH: PRE-PLATED .000040"-.000080" [0.00100-0.00200] REFLOWED TIN OVER .000012"-.000040" [0.00030-0.00100] COPPER PER ASTM B545.
- 4. ALL DIMENSIONS APPLY AFTER PLATING.
- 5. .003[0.08] MAX BLANKING BURR PERMISSIBLE, BURRS NOT TO EXCEED THE SPECIFIED FEATURE TOLERANCE. BURR SIDE FACES HUB. NO BURR WHERE NOTED.
- 6. .005[0.13] MAX RADII & FILLETS PERMISSIBLE ON ALL CORNERS.
- 7. QUANTITY OF PARTS PER REEL: 35K±15% ONE BREAK NOT LESS THAN 25% OF REEL CAPACITY. PACKAGE PER AUTOSPlice SPEC 0049. 25 lb MAX
- 8. RECOMMENDED PTH HOLE:
COPPER PLATED HOLE SIZE: $\varnothing .043 \pm .002 [1.10 \pm 0.05]$
ADJUST DRILL SIZE TO OBTAIN THIS DIA FOR DIFFERENT PLATING THICKNESS.
TIN / LEAD FINISHED HOLE SIZE: $\varnothing .042 \pm .003 [1.07 \pm 0.08]$
- 9. TERMINAL RETENTION FORCE: TBD.

REV	REVISION RECORD	ECN	BY	APVD	DATE
A	INITIAL RELEASE	504007	BL	BB	9/29/2005
B	CHANGED REEL MATERIAL TO PLASTIC	504231	BL	BB	11/22/2005
C	CHA REEL QTY, REMOVE INTERLEAF	504347	BL	BB	1/31/2006

△ 2 MATERIAL: C26000 BRASS 1/2 HARD, .0252+/-0.0006 PREPLATED STOCK THICKNESS.

△ 3 FINISH: PRE-PLATED .000040"-.000080" [0.00100-0.00200] REFLOWED TIN OVER .000012"-.000040" [0.00030-0.00100] COPPER PER ASTM B545.

4. ALL DIMENSIONS APPLY AFTER PLATING.

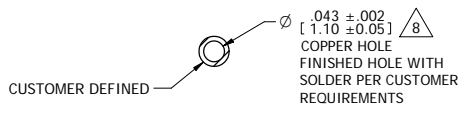
△ 5 .003[0.08] MAX BLANKING BURR PERMISSIBLE, BURRS NOT TO EXCEED THE SPECIFIED FEATURE TOLERANCE. BURR SIDE FACES HUB. NO BURR WHERE NOTED.

6. .005[0.13] MAX RADII & FILLETS PERMISSIBLE ON ALL CORNERS.

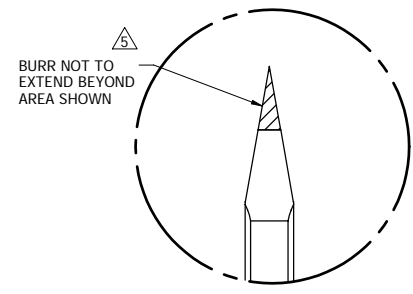
△ 7 QUANTITY OF PARTS PER REEL: 35K±15% ONE BREAK NOT LESS THAN 25% OF REEL CAPACITY. PACKAGE PER AUTOSPlice SPEC 0049. 25 lb MAX

△ 8 RECOMMENDED PTH HOLE:
COPPER PLATED HOLE SIZE: $\varnothing .043 \pm .002 [1.10 \pm 0.05]$
ADJUST DRILL SIZE TO OBTAIN THIS DIA FOR DIFFERENT PLATING THICKNESS.
TIN / LEAD FINISHED HOLE SIZE: $\varnothing .042 \pm .003 [1.07 \pm 0.08]$

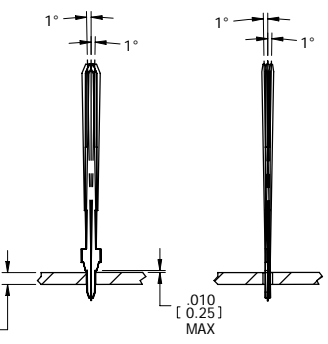
9. TERMINAL RETENTION FORCE: TBD.



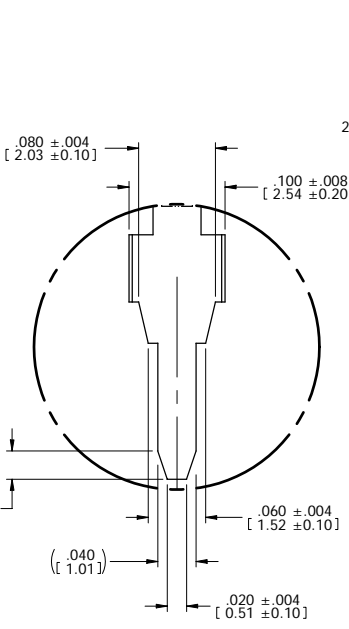
HOLE LAYOUT △ 8



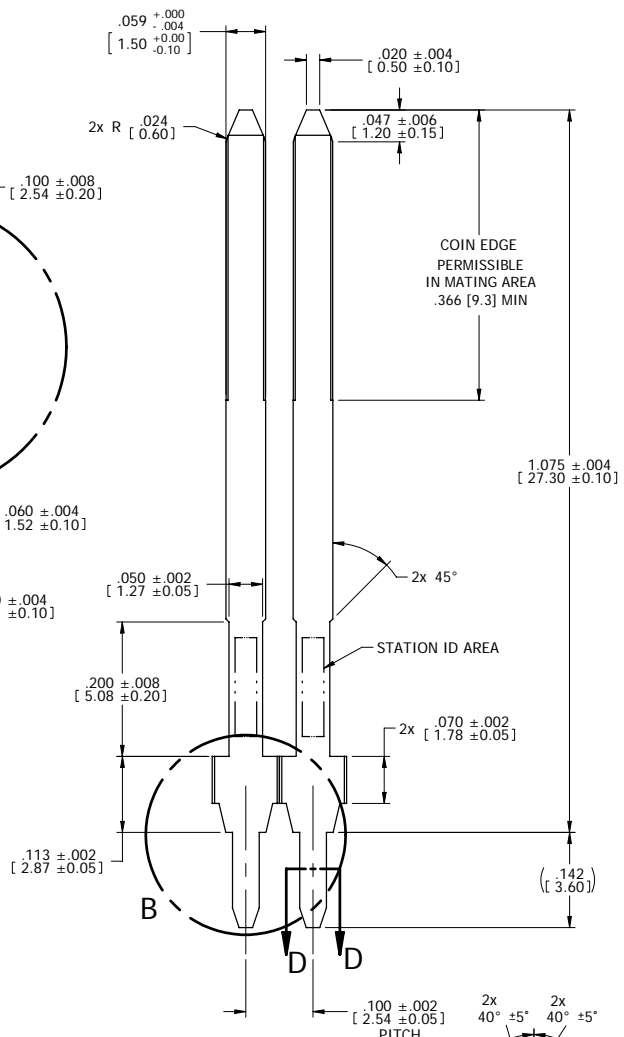
DETAIL C



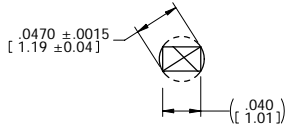
APPLICATION VIEW



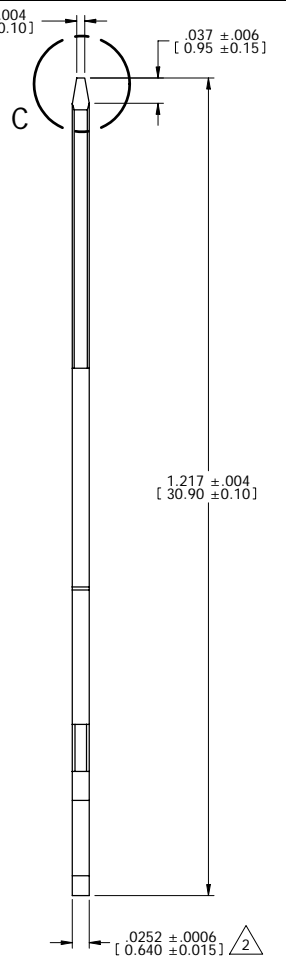
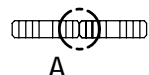
DETAIL B



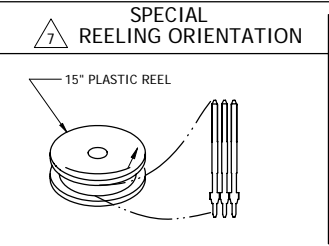
DETAIL A



SECTION D-D



**CONFIDENTIAL
CUSTOMER
DRAWING**



SPECIAL REELING ORIENTATION △ 7

The drawing and the information set forth hereon are the property of AutosplICE, Inc. and are to be held in trust and confidence. Publication, disclosure, or use for any purpose not expressly authorizing in writing by AutosplICE, Inc. is prohibited.

MATERIAL:	△ 2
FINISH:	△ 3

TOLERANCES UNLESS OTHERWISE SPECIFIED DIMENSIONS IN INCHES	DECIMAL: .XX = ± .01 [X.X] = ± 0.3 [XXX] = ± .004 [XXXX] = ± 0.10
ANGULAR: ± 2°	◇ DENOTES SPECIAL CHARACTERISTIC

autosplICE		AutosplICE, Inc. 10121 Barnes Canyon Rd. San Diego, CA 92121-2725 858.535.0077	
DESIGNED BY	JOE	DATE	02-10-03
ENGINEERED BY	BIANCA	DATE	02-10-03
TITLE: VERTICAL TERMINAL, 1.5mm			
SIZE	B	DRAWING NUMBER	C7-V1089-002TT
SCALE	8:1	P&ID NO.	C7-V1089-002TT.cpl
MODEL NO.	7-V1089.pdf	SHEET	1 OF 1