

4

3

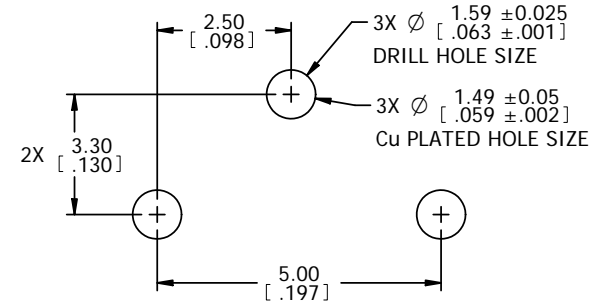
2

1

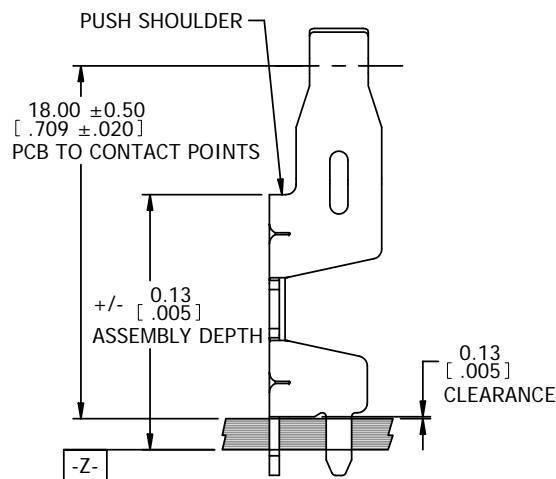
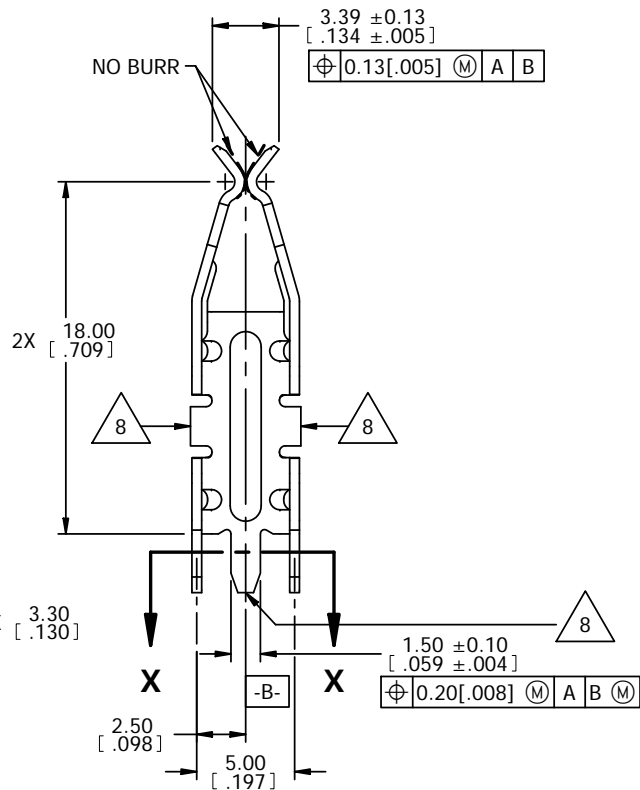
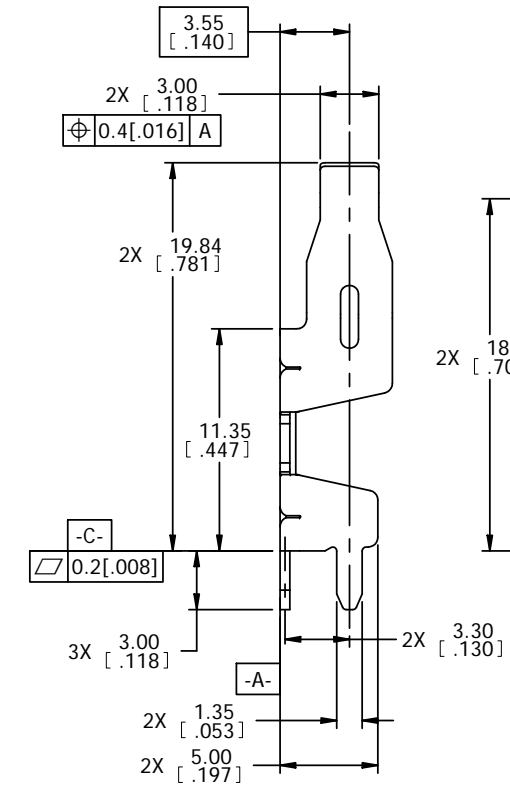
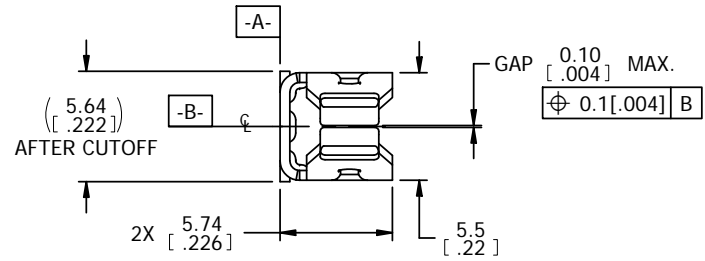
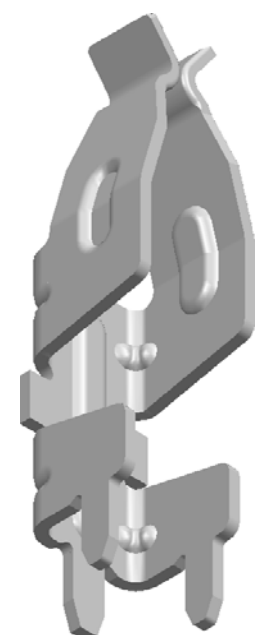
NOTES: UNLESS OTHERWISE SPECIFIED

- 1. INTERPRET DRAWING IN ACCORDANCE WITH ASME Y14.5-1994.
- 2. MATERIALS: C18080 ALLOY, TR08 TEMPER, 0.51+/-0.01[.020+/-0.0004] THICK
- 3. FINISHES: 3.05 MICRONS [.000120] MINIMUM TIN OVER 1.27 MICRONS [.000050] MINIMUM NICKEL, BOTH OVERALL [PER ASTM B545 (ELECTRO-DEPOSITED TIN) AND ASTM B689, QQ-N-290]
- 4. 0.10[.004] MAX. BLANKING BURR IS PERMITTED EXCEPT WHERE NOTED.
- 5. 0.15[.006] MAX. RADII ARE PERMISSIBLE IN ALL CORNERS.
- 6. ALL DIMENSIONS APPLY AFTER PLATING.
- 7. PACKAGING QUANTITY PER REEL: 2000 PCS.
- UNPLATED AT CUTOFF.

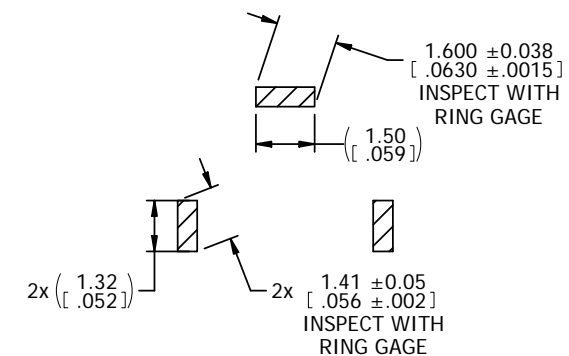
REV	REVISION RECORD	ECN	BY	APVD	DATE
A	RELEASE TO PRODUCTION	505624	GMS	GMS	11/20/08
B	NOTES, BLOCK TOLERANCE CHANGED	505750	GMS	GMS	04/01/09
C	UPDATES PER EWR 107511	506437	RJB	RJB	04/18/12



RECOMMENDED PCB HOLE DIMENSIONS (REFERENCE)

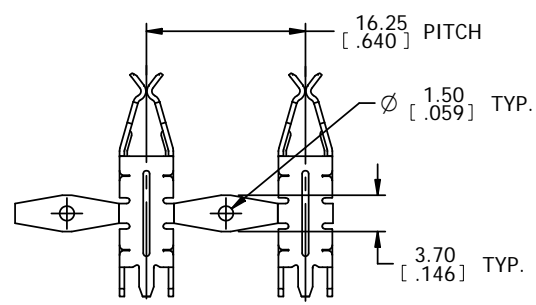
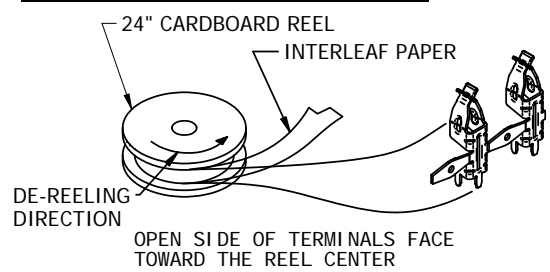


PCB ASSEMBLY HEIGHTS (REFERENCE)



SECTION X-X

PACKAGING AND CARRIER DETAILS



The drawing and the information set forth herein are the property of Autossplice, Inc. and are to be held in trust and confidence. Publication, disclosure, or use for any purpose not expressly authorizing in writing by Autossplice, Inc. is prohibited.

MATERIAL: SEE NOTE 2.
FINISH: SEE NOTE 3.

TOLERANCES UNLESS OTHERWISE SPECIFIED DIMENSIONS IN mm (INCHES)				Autossplice, Inc. 10121 Barnes Canyon Rd. San Diego, CA 92121-2725 858-533-0077	
DECIMAL: .XX = ± 0.3 [.XX] = ± [01] X.XX = ± 0.10 [.XXX] = ± [004]	ANGULAR: ± 1°	THIRD ANGLE PROJECTION	DATE: 4/17/2012	DRAWN BY: BADGER	ENGINEERED BY: SIMMEL
TITLE: 3-LEGGED RECEPTACLE					
SIZE: C	FSCM NO: OAE89	DRAWING NUMBER: C7-R1006-002TT	REVISION: C		
SCALE: 4:1 CAD NO: C7-R1006-002TT.cad MODEL NO: 7-R1006-002_A.psm SHEET 1 OF 1					

4

3

2

1