

4

3

2

1

| REV | REVISION RECORD | ECN | BY | APVD | DATE |
|-----|-----------------------------|--------|------|------|----------|
| X24 | CHNG PLTG TO TT | | JB | JB | 08/20/04 |
| A | INIT RELEASE PER EWR 103753 | 503560 | BILL | JB | 09/17/04 |
| B | CHNG PTH EWR 104443 | 503805 | BILL | PVB | 03/10/05 |
| C | CHNG PER TDR # 05026 | 503890 | BILL | PVB | 06/09/05 |
| D | CHNG PER EWR 108219 | 506877 | LD | LD | 08/12/14 |

NOTES: UNLESS OTHERWISE SPECIFIED

1. INTERPRET DRAWING IN ACCORDANCE WITH ANSI Y14.5-1994.

2 MATERIAL: C18080-TR08 COPPER ALLOY.

3 FINISH: POST PLATE .0001200 IN. [0.0030] MIN THICK 100% Sn OVER .000050 IN. [0.00127] MIN NICKEL.

4. BLANKING BURRS MUST NOT EXCEED .003 [0.08] MAX.

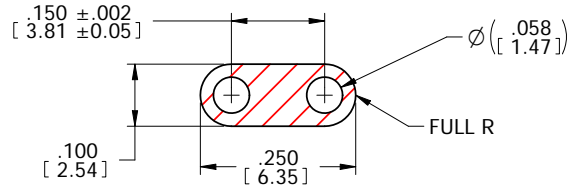
5. RADII AND FILLETS NOT TO EXCEED .005 [0.13] MAX.

6. ALL DIMENSIONS APPLY AFTER PLATING.

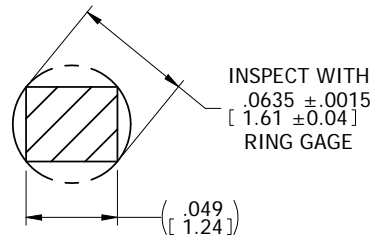
7. SOLDERABILITY PER IPC/EIA J-STD-002, TEST A, CATEGORY 3.

8 PART TO SUPPLIED ON A CONTINUOUS REEL AS SHOWN, ONE BREAK PERMISSIBLE. QUANTITY OF PARTS PER REEL IS 17,000 ±15% PIECES. PKG PER AUTOSPlice SPEC 0049.

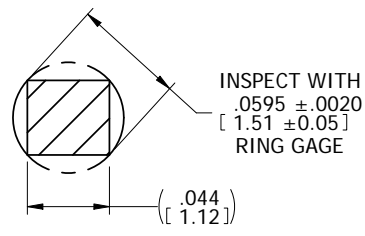
9 RECOMMENDED HOLE SIZE:
HOLE SIZE: DRILL Ø .063 [Ø 1.60] REF.
IMMERSION TIN FINISHED Cu HOLE: Ø .059 ± .002 [Ø 1.50±0.051]
BOTTOM SIDE ANNULAR RING: .020 [0.51]



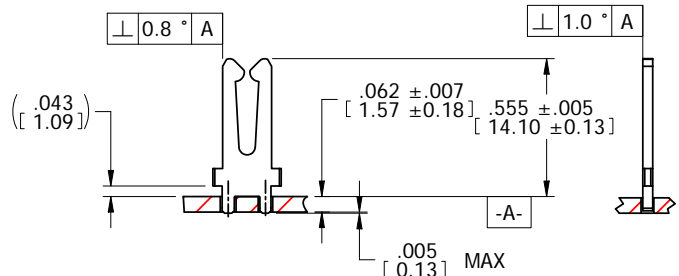
TOP SIDE PAD LAYOUT



SECTION A-A

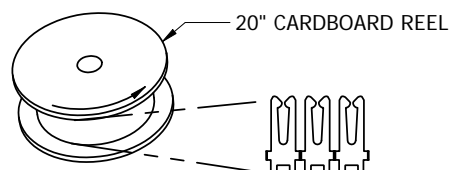


SECTION B-B



APPLICATION VIEW

8 WINDING INSTRUCTIONS:

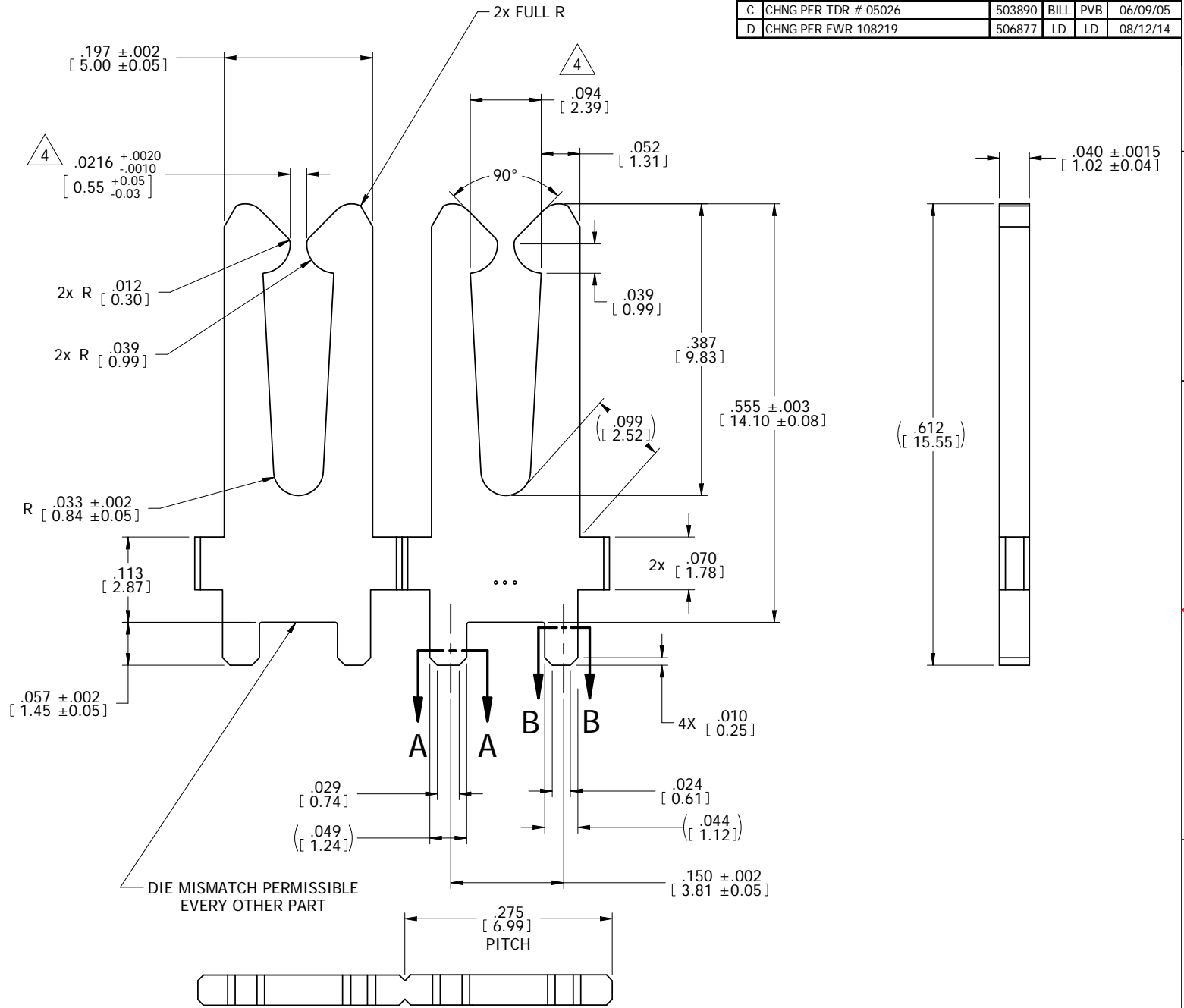


4

3

2

1



DIE MISMATCH PERMISSIBLE EVERY OTHER PART

CUSTOMER DRAWING

The drawing and the information set forth hereon are the property of AutosplICE, Inc. and are to be held in trust and confidence. Publication, disclosure, or use for any purpose not expressly authorizing in writing by AutosplICE, Inc. is prohibited.

| | | | |
|---|----------------------------------|--|---|
| TOLERANCES UNLESS OTHERWISE SPECIFIED DIMENSIONS IN INCHES [mm] | | AutosplICE, Inc. 10121 Barnes Canyon Rd. San Diego, CA 92121-2725 858-535-0077 | |
| DECIMAL: .XX ±.01 [X.X] ±[0.3] | THIRD ANGLE PROJECTION | DRAWN BY: BILL T | DATE: 1-26-04 |
| .XXX ±.005 [X.XX] ±[0.13] | ANGULAR: ±5° | ENGINEERED BY: BIANCA | DATE: 1-26-04 |
| ◇ DENOTES SPECIAL CHARACTERISTIC | TITLE: VERTICAL TERMINAL, SOCKET | | REVISION: D |
| SIZE: C | FORM NO: OAE89 | DRAWING NUMBER: C7-V1045-011TT | SCALE: 4X [A0 NO. C7-V1045-011TT.dft MODEL NO. 7-V1045-011c.par SHEET 1 OF 1] |