

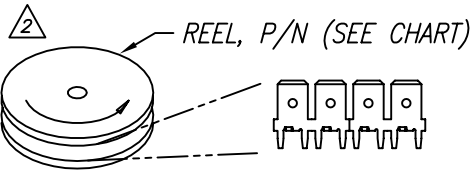
4

3

2

1

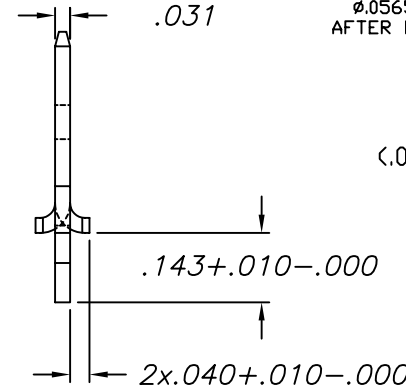
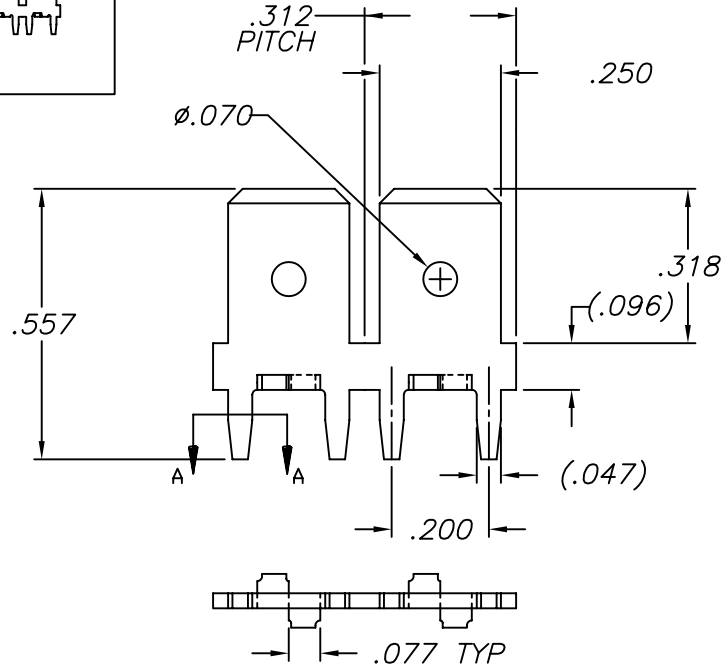
### WINDING INSTRUCTION



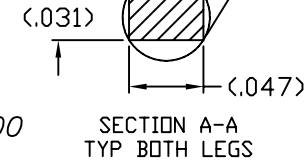
### CUSTOMER DRAWING

This drawing and the information set forth hereon are the property of Autossplice, Inc. and are to be held in trust and confidence. Publication, duplication, disclosure, or use for any purpose not expressly authorized in writing by Autossplice, Inc. is prohibited.

REV	REVISION RECORD	ECN	BY	APVD	DATE
B	PER EWR 990413	16613	TM	JB	7-09-99
C	CHANGE P/N TO -A	16761	JB	JB	8-25-99
D	CHANGE REEL SIZE & QTY	502014	JB	JB	02-27-02
E	PER EWR 102040	502072	JB	JB	04-01-02
F	PER EWR 102535	502443	JB	JB	11-06-02
G	ADDED PART PER EWR 104798	504173	RJB	PVB	11-28-05



FUNCTIONAL GAGE  
 Ø.0565 MAX  
 AFTER PLATING



4 FINISH: POST-PLATED;  
 \*A\* = .00010" [2.54 MICRONS] MIN. MATTE 90/10 TIN-LEAD OVER  
 .00005" [1.27 MICRONS] MIN. NICKEL.  
 \*TT\* = .00016" [4.06 MICRONS] MATTE TIN (LEAD FREE) OVER  
 .00008" [2.03 MICRONS] MIN. NICKEL.

3 RECOMMENDED FINISHED HOLE SIZE WITH 1oz COPPER  
 AND .001 THICK TIN/LEAD: Ø.050±.002

2 PART TO BE SUPPLIED ON A CONTINUOUS REEL,  
 ONE BREAK PERMISSIBLE PER REEL PACKAGE  
 PER AUTOSPlice SPEC 0049.

1. DIMENSIONS AND TOLERANCES PER ANSI Y14.5M-1982.

NOTES: UNLESS OTHERWISE SPECIFIED

7-13332-T	52-2221-4 24' CARDBOARD	'TT' Δ	9,000±15%
7-13332-A	52-2221-4 24' CARDBOARD	'AA' Δ	9,000±15%
7-13332-8	52-2339-5 14' CARDBOARD	'AA' Δ	2,750±15%
P/N	REEL P/N	FINISH	REEL QTY

MATERIAL	TOLERANCES UNLESS OTHERWISE SPECIFIED
COPPER ALLOY	INCHES XX ± .01 XXX ± .005 XXXX ± .0005
FINISH	FILLET RADII BREAK EDGES ANGULAR ± 2'
SEE TABLE	RMS FINISH ✓
NEXT ASSY	

**autossplice** © AUTOSPlice INC.  
 10121 Barnes Canyon Road  
 San Diego, California 92121  
 (619) 535-0077

CUSTOMER OR PRODUCT: AUTOSPlice INC.  
 DRAWN BY: M. MCGEE DATE: 12-05-95  
 ENGINEERED BY: J. BIANCA DATE: 12-05-95

TITLE: .250 QUICK DIS., RIGITAB

SIZE B	FSCM NO. OAE89	DRAWING NUMBER C7-13332-[]	REVISION G
--------	----------------	----------------------------	------------

SCALE: 4:1 CAD FILE NO. C7-13332-[]G.DWG SHEET 1 OF 1

4

3

2

1