

4

3

2

1

NOTES: UNLESS OTHERWISE SPECIFIED

- 1. INTERPRET DRAWING IN ACCORDANCE WITH ASME Y14.5 1994.
- 2. MATERIAL: C26000 BRASS 1/2 HARD ('1/2H' TEMPER), .0315 +/- .0006 PREPLATED STOCK THICKNESS.
- 3. FINISH: PRE-PLATED .000040"-.000080" [0.001-0.002] REFLOWED TIN OVER .000012"-.000040" [0.0003-0.001] COPPER PER ASTM B545.
- 4. ALL DIMENSIONS APPLY AFTER PLATING.
- 5. .003[0.08] MAX BLANKING BURR PERMISSIBLE, BURRS NOT TO EXCEED THE SPECIFIED FEATURE TOLERANCE.
- 6. .005[0.13] MAX RADII & FILLETS PERMISSIBLE ON ALL CORNERS.
- 7. QUANTITY OF PARTS PER REEL: 5K ONE BREAK NOT LESS THAN 25% OF REEL CAPACITY. PACKAGE PER AUTOSPICE SPEC 0049. 25 lb MAX
- 8. RECOMMENDED PTH HOLE: SEE DRAWING XNP-3013-5.
- 9. TERMINAL RETENTION FORCE: TBD.

CUSTOMER APPROVAL

WITH CHANGE (PLEASE RED LINE WITH INITIAL)

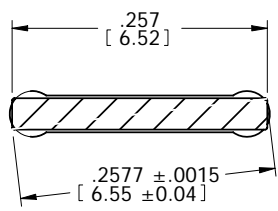
WITHOUT CHANGE

SIGNATURE: _____ DATE: _____

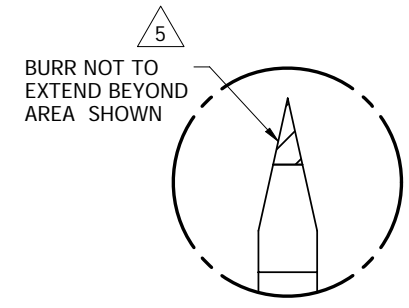
TITLE: _____

COMPANY: _____

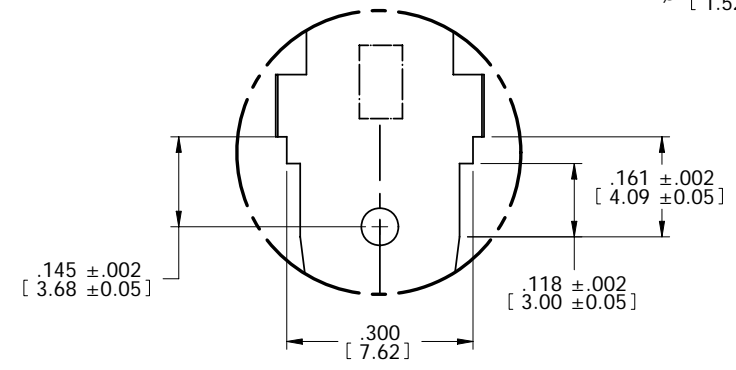
REV	REVISION RECORD	ECN	BY	APVD	DATE
X6	Changed Per Customer Dwg of 6-23-06		BL	BB	7/10/2006
X7	Changed Dim .0315±.0006 to .0315±.001 Changed Dim .657 to (.657) Removed Tolerance from Dim .100 Added Tolerance ±.002 to Dims .118 and .161		BL	BB	9/7/2006
A	INITIAL RELEASE	504711	BL	BB	9/25/2006
B	REMOVED INTERLEAF PAPER FROM REELING	504848	BL	BB	1/24/2007



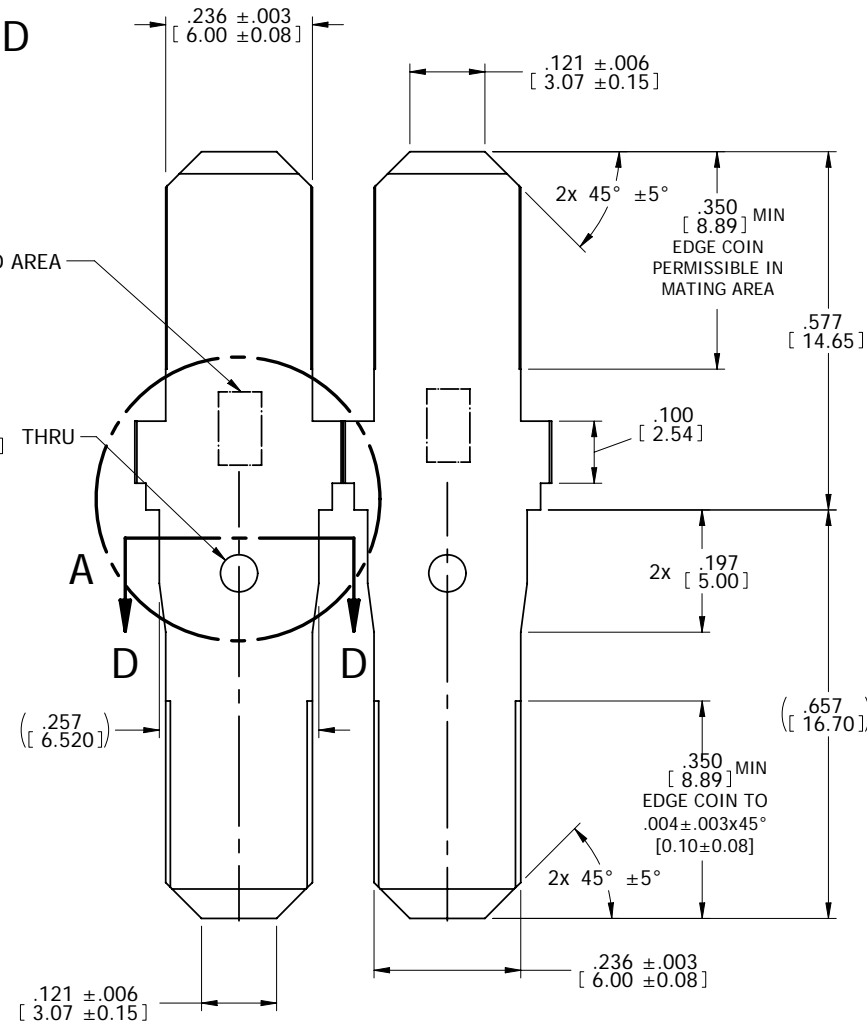
SECTION D-D



DETAIL C



DETAIL A



STATION ID AREA

Ø .060 [1.52] THRU

(.257 [6.520])

(.657 [16.70])

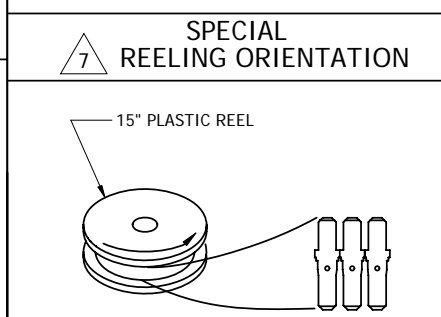
.350 MIN [8.89] EDGE COIN TO .004±.003x45° [0.10±0.08]

.121 ± .006 [3.07 ± 0.15]

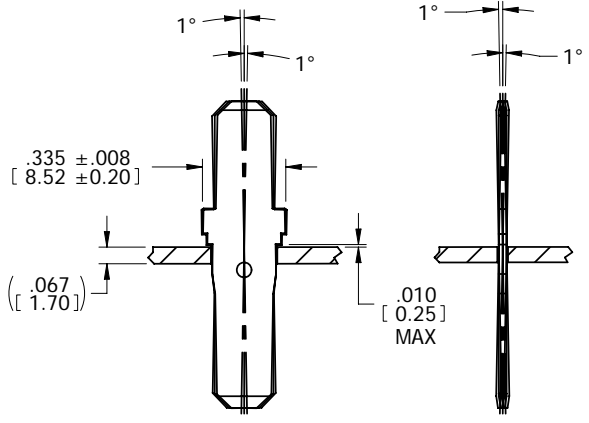
.236 ± .003 [6.00 ± 0.08]

2x 40° ± 5° 2x 40° ± 5°

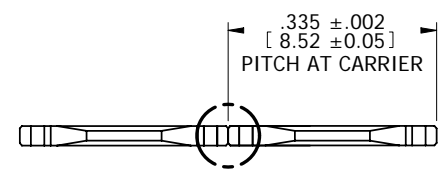
.335 ± .002 [8.52 ± 0.05] PITCH AT CARRIER



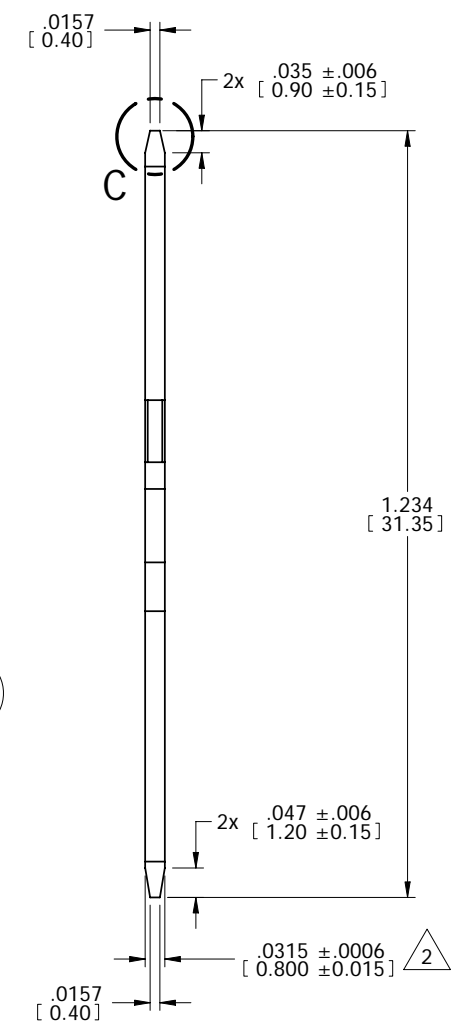
15" PLASTIC REEL



APPLICATION VIEW



DETAIL B



.0157 [0.40]

2x .035 ± .006 [0.90 ± 0.15]

1.234 [31.35]

2x .047 ± .006 [1.20 ± 0.15]

.0315 ± .0006 [0.800 ± 0.015]

The drawing and the information set forth herein are the property of AutosplICE, Inc. and are to be held in trust and confidence. Publication, disclosure, or use for any purpose not expressly authorizing in writing by AutosplICE, Inc. is prohibited.

MATERIAL: 2

FINISH: 3

TOLERANCES UNLESS OTHERWISE SPECIFIED DIMENSIONS IN IN (mm)

DECIMAL: .XX = ± .01
[.XX] = ± [0.3]
XXX = ± .004
[.XX] = ± [0.10]

ANGULAR: ± 2°

◇ DENOTES SPECIAL CHARACTERISTIC

autosplICE		AutosplICE, Inc. 10121 Barnes Canyon Rd. San Diego, CA 92121-2725 858-533-0077	
THIRD ANGLE PROJECTION	DATE	DRAWN BY	DATE
	08-09-05	B. LENTO	08-09-05
TITLE	ENGINEERED BY	DATE	REVISION
VERTICAL TERMINAL GMT 610/611	BB	08-09-05	B
SIZE B	DRAWING NUMBER	SCALE: 8:1	MODEL NO. 7-V1097-002TT.dft
OAE89	C7-V1097-002TT		

4

3

2

1

F

E

D

C

B

A

F

E

D

C

B

A