

4

3

2

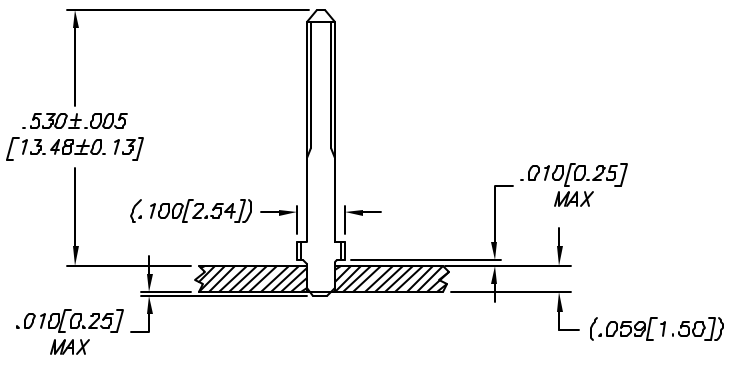
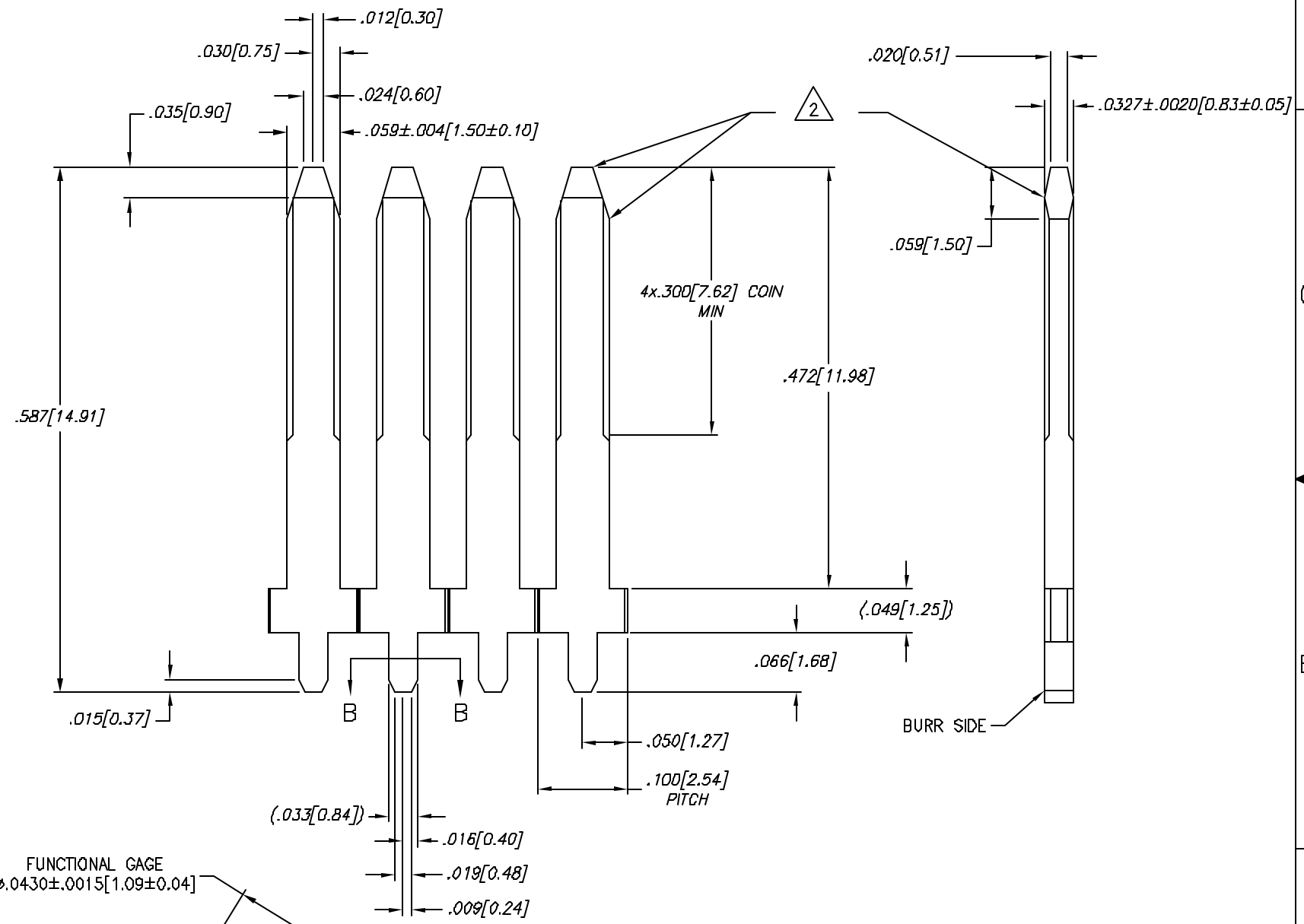
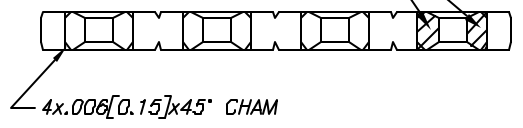
1

NOTES: UNLESS OTHERWISE SPECIFIED

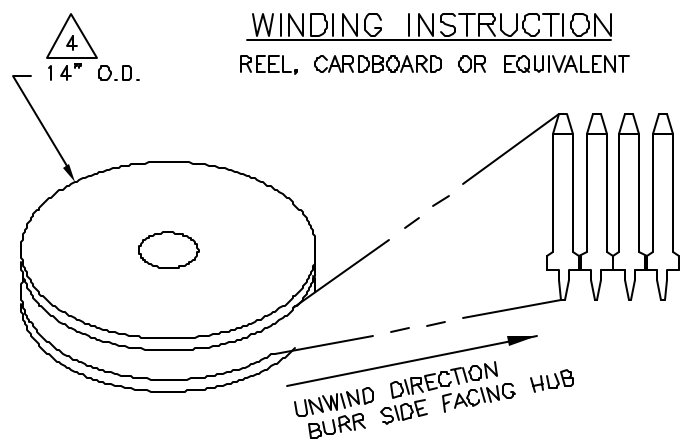
- 1. INTERPRET DRAWING IN ACCORDANCE WITH ANSI Y14.5-1982.
- 2. PARTS MUST BE FREE OF BURRS IN EXCESS OF .004[0.10], .001 [0.03] MAX BURR IN IN DIE DIRECTION IN LOCATION SHOWN.
- 3. ALL DIMENSIONS APPLY AFTER PLATING.
- 4. PART TO BE SUPPLIED ON A CONTINUOUS REEL AS SHOWN IN REELING ORIENTATION. PACKAGE PER AUTOSPICE SPEC 0049, QUANTITY OF PARTS PER REEL 25,000±15% PCS.
- 5. MATERIAL: C26000 BRASS 3/4 HARD.
- 6. FINISH: POST-PLATED .000120" [.0030] MIN. Sn/Pb OVER .000050" [.001] MIN Ni.
- 7. ALL FILLET AND RADII .005 MAX
- 8. RECOMMENDED DRILL HOLE SIZE:  $\phi$ .043±.001 WITH 1oz. COPPER PLATING:  $\phi$ .039±.002 TIN/LEAD FINISHED HOLE:  $\phi$ .038±.002

REV	REVISION RECORD	EQN	BY	APVD	DATE
X7	REDUCE LENGTH PER CUST	-	JB	JB	12-8
A	RELEASE PER EWR 101796	901906	JB	JB	02-13
B	CHANGE PER EWR 102985	002761	JB	JB	05-20

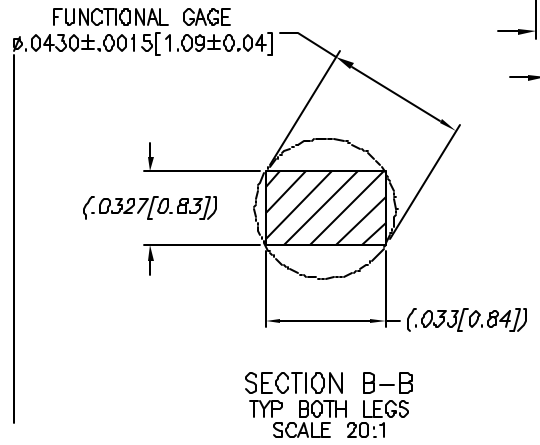
2 BURR PERMISSIBLE IN THIS AREA ONLY



PART INSTALLED IN PCB



WINDING INSTRUCTION  
REEL, CARDBOARD OR EQUIVALENT



SECTION B-B  
TYP BOTH LEGS  
SCALE 20:1

CUSTOMER DRAWING

TOLERANCES UNLESS OTHERWISE SPECIFIED DIM IN INCH		AUTOSPICE INC. 10121 Barnes Canyon Road San Diego, California 92121 (619) 539-0077	
DECIMAL: XX ±.01	[X.X] ±[0.3]	THIRD ANGLE PROJECTION	DATE 5-31-01
.XXX ±.005	[X.XX] ±[0.13]	DRWN BY JOE	DATE 5-31-01
ANGULAR: ±1°		ENGINEERED BY BIANCA	
TITLE VERTICAL TERMINAL .059		SIZE A	REV B
DRAWN BY 0AEB9		BRNNG NUMBER C7-V1059-002AA	
SCALE: 10:1		DWG FILE NO. 7-V1059b.DWG	SHEET 1 OF 1

This drawing and the information set forth hereon are the property of Autossplice, Inc. and are to be held in trust and confidence. Publication, duplication, disclosure, or use for any purpose not expressly authorized in writing by Autossplice, Inc. is prohibited.

MATERIAL 5  
FINISH 6

4

3

2

1