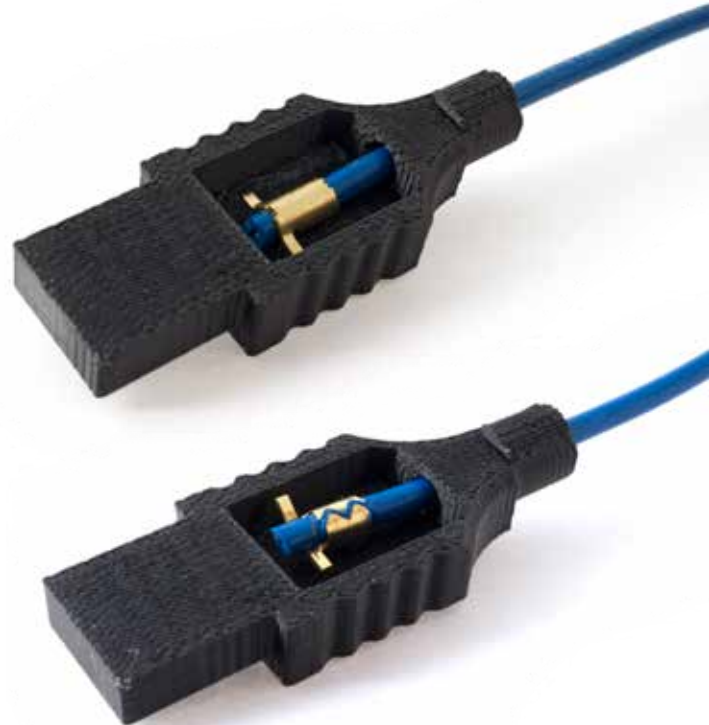


STRAIN RELIEF SPICEBAND

PROVIDES PROTECTION AGAINST CABLE
FAILURE CAUSED FROM PULLING,
PUSHING, AND TWISTING FORCES



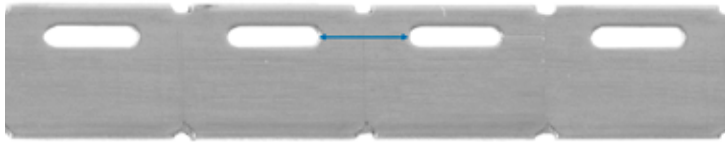
KEY FEATURES

- Prevents mechanically applied forces from being transferred to the electrical conductor terminations;
- Supports a minimum of 10 lbs. pull force without slipping on jacket;
- Cable remains intact when crimped and when stressed by pulling, pushing or twisting forces;
- Manufactured from brass for durability and low cost, high volume applications;
- Works with Autossplice ACS2000 machines for efficient assembly (requires Strain Relief Tool Set, purchased separately);
- Continuously fed through machine, the strain relief Spliceband crimps and forms relief in one process step with capacities up to 2000 crimps/hour;
- Provided on Autossplice, Spliceband reels for convenience, ease of use, and repeatability;
- Works with over-molding, solid/smooth, and segmented wire grommets and bend reliefs;
- Small form factor saves space, fits most applications;
- Securely anchors and protects cable, reinforces mechanical strength.

STRAIN RELIEF BAND

Our reels are comprised of approximately 8000 pcs. They are stamped and coined with exceptional precision tolerances.

Stamping tools are designed to increase or decrease punched features to accommodate different wire diameters enabling proper splice application



Band is customized to fit specific wire diameters.



The Autosplice ACS 2000 Global Splice System is the most advanced, adaptable splice interconnect applicator available for global manufacturing environments.

Designed and tested throughout Europe, this proven platform provides reliable repeatable performance across a wide spectrum of interconnect challenges.

Strain Relief Tool Set has to be purchased separately.



OUR OFFER >>

Send us your cable assemblies and receive a free evaluation of tool sizing and pull strength capabilities.

>> 10431 Wateridge Circle, Suite 110, San Diego CA 92121

AUTHORIZED DISTRIBUTORS



800. 325. 0534 | sales@keiconn.com



877. 447. 2650 | info@hiscoinc.com

Schiffer Corporation

Spare Parts & Splice Machine
Representative
269-465-3400
gina@schiffercorporation.com