

4

3

2

1

NOTES: (UNLESS OTHERWISE SPECIFIED)

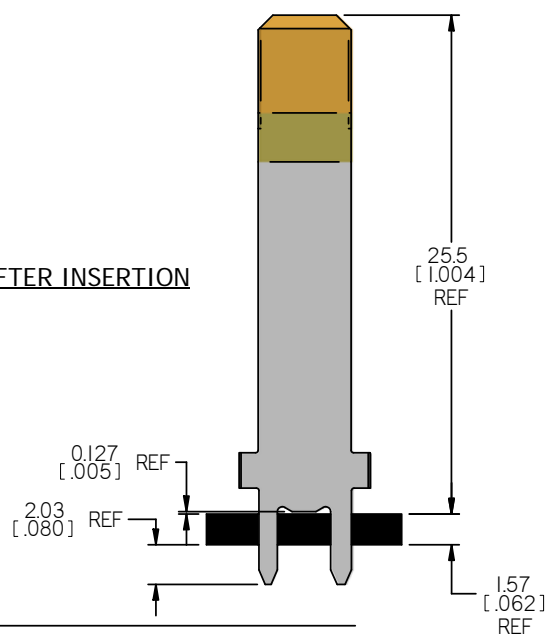
- 1. INTERPRET DRAWING IN ACCORDANCE WITH ASME Y14.5-1994.
- 2. MATERIAL: BRASS C26000, 3/4 HARD.
- 3. FINISH: POST- PLATE 3.05µm [.000120] MIN MATTE TIN (LEAD FREE) OVER 1.27µm [.000050] MIN NICKEL.
- 4. FINISH: POST- PLATE 0.8µm [.000031] MIN GOLD OVER 1.27µm [.000050] MIN NICKEL.
- 5. GOLD AND TIN PLATING 'GAP' AREA. 1.27µm [.000050] MIN NICKEL UNDERPLATE ONLY.
- 6. ALL DIMENSIONS APPLY AFTER PLATING.
- 7. 0.075 [.003] MAX BLANKING BURR PERMISSIBLE, BURRS NOT TO EXCEED THE SPECIFIED FEATURE TOLERANCE.
- 8. 0.13 [.005] MAX RADII PERMISSIBLE ON ALL CORNERS.
- 9. QUANTITY OF PARTS PER REEL: 15,000 ±15%. ONE BREAK NOT LESS THAN 25% OF REEL CAPACITY AND NO SPLICES ALLOWED WITHIN A REEL. NARROW LEG TO BE LEADING WHEN BEING UN-REELED.
- 10. ALL PARTS MUST BE FREE OF CONTAMINANTS (GREASE, OILS, ETC.), AND/OR IMPERFECTIONS THAT COULD AFFECT THE FORM, FIT, OR FUNCTION.
- 11. RECOMMENDED DRILL HOLE: $\phi 1.18 \pm 0.025$ [.0465 ±.0010] WITH 1oz COPPER PLATING: $\phi 1.08 \pm 0.05$ [.0425 ±.0020] TIN FINISHED HOLE: $\phi(1.07 [.042])$ REF
- 12. BLADE THICKNESS, 0.51 ± 0.03 [.020 ±.0012], TO BE STATISTICALLY CAPABLE TO >0.75 CPK, WHEN MEASURED AT A POINT WITHIN ZONE X.
- 13. BLADE WIDTH, 4.75 ± 0.08 [.187 ±.003], TO BE STATISTICALLY CAPABLE TO >0.75 CPK.

REV	REVISION RECORD	ECN	BY	APVD	DATE
A	RELEASE PER EWR 105995	505580	RJB	RJB	10/14/08
B	UPDATE PER CDR 302828	506434	RJB	RJB	04/16/12
C	REEL DIR. UPDATE PER EWR 107703	506521	RJB	RJB	09/14/12

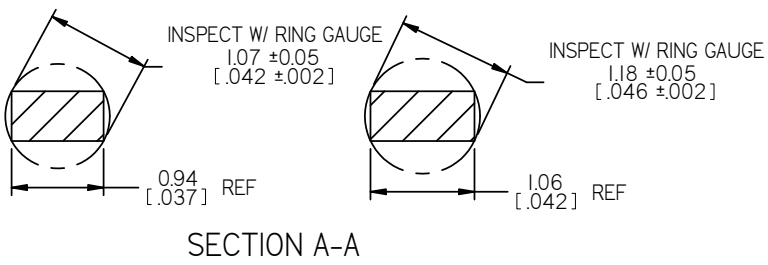
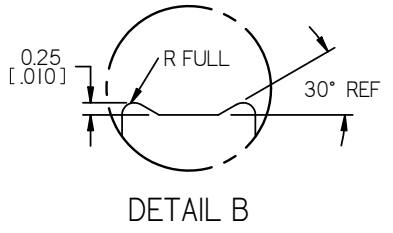
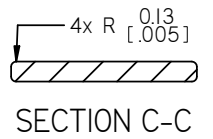
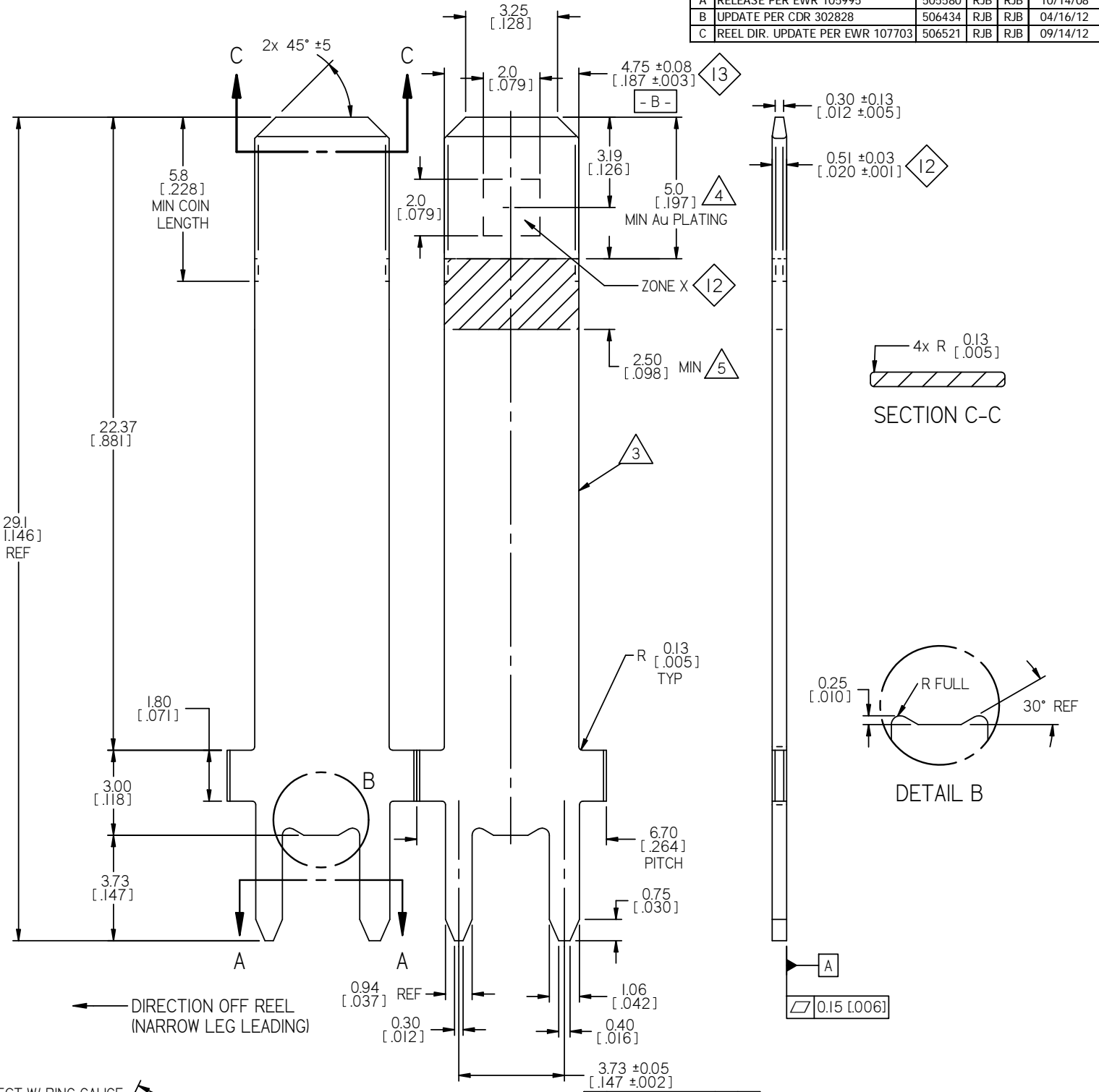
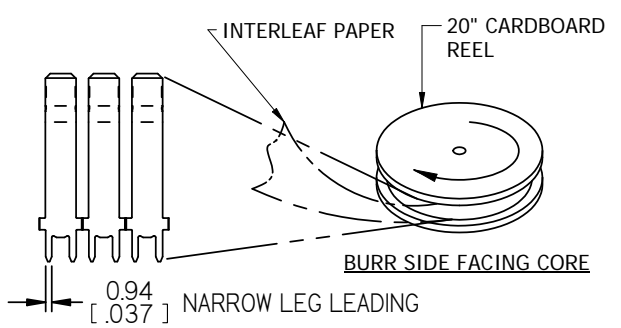
F
E
D
C
B
A

F
E
D
C
B
A

AFTER INSERTION



REELING ORIENTATION AFTER PLATING



DIRECTION OFF REEL (NARROW LEG LEADING)

CUSTOMER DRAWING

The drawing and the information set forth hereon are the property of AutosplICE, Inc. and are to be held in trust and confidence. Publication, disclosure, or use for any purpose not expressly authorizing in writing by AutosplICE, Inc. is prohibited.	TOLERANCES UNLESS OTHERWISE SPECIFIED DIMENSIONS IN INCHES (mm) DECIMAL: .XX = ±.01 [X.X] = ±[0.3] .XXX = ±.004 [X.XX] = ±[0.10] ANGULAR: ± 5°		AutosplICE, Inc. 10121 Barnes Canyon Rd. San Diego, CA 92121-2725 858-535-0077 www.autosplICE.com
	THIRD ANGLE PROJECTION 	DRAWN BY: Badger DATE: 6-13-08 ENGINEERED BY: Badger DATE: 6-13-08	TITLE: 4.75mm VERTICAL TAB
SCALE: NONE CAD NO: C7-V1108-002ET.CDT MODEL NO: 7-V1108-002.PAR SHEET 1 OF 1	SIZE: C FSCM NO: OAE89 DRAWING NUMBER: C7-V1108-002ET	REVISION: C	

4

3

2

1