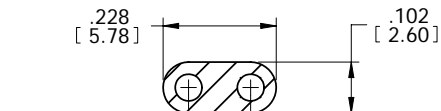


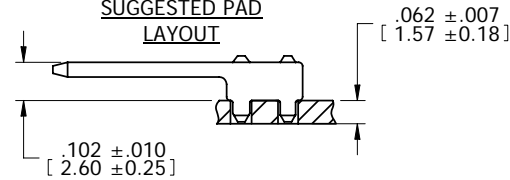
REV	REVISION RECORD	ECN	BY	APVD	DATE
X3	.057 LEG WAS .110	-	BILL	PVB	06/01/05
A	REL TO PRODUCTION PER EWR 104586	504128	BILL	PVB	09/29/05

NOTES: UNLESS OTHERWISE SPECIFIED

1. INTERPRET DRAWING IN ACCORDANCE WITH ASME Y14.5-1994.
- 2 MATERIAL: C26000 BRASS, TEMPER HARD.
- 3 FINISH: POST-PLATED, .000120" [0.0030] MIN MATTE TIN (LEAD FREE) OVER .000080" [0.0020] MIN NICKEL.
4. ALL DIMENSIONS APPLY AFTER PLATING.
5. .003 [0.08] MAX BLANKING BURR PERMISSIBLE, BURRS NOT TO EXCEED THE SPECIFIED FEATURE TOLERANCE.
6. .010 [0.25] MAX RADII & FILLETS PERMISSIBLE ON ALL CORNERS.
- 7 QUANTITY OF PARTS PER REEL: 25,000 ONE BREAK ALLOWED WITHIN A REEL. PACKAGED PER AUTOSPlice SPEC.- 0049
8. RECOMMENDED FINISHED HOLE SIZE:  $\varnothing .055 \pm .002$  [ $\varnothing 1.40$ ]. GOLD OVER NICKEL OVER .001 [0.03] MIN COPPER.

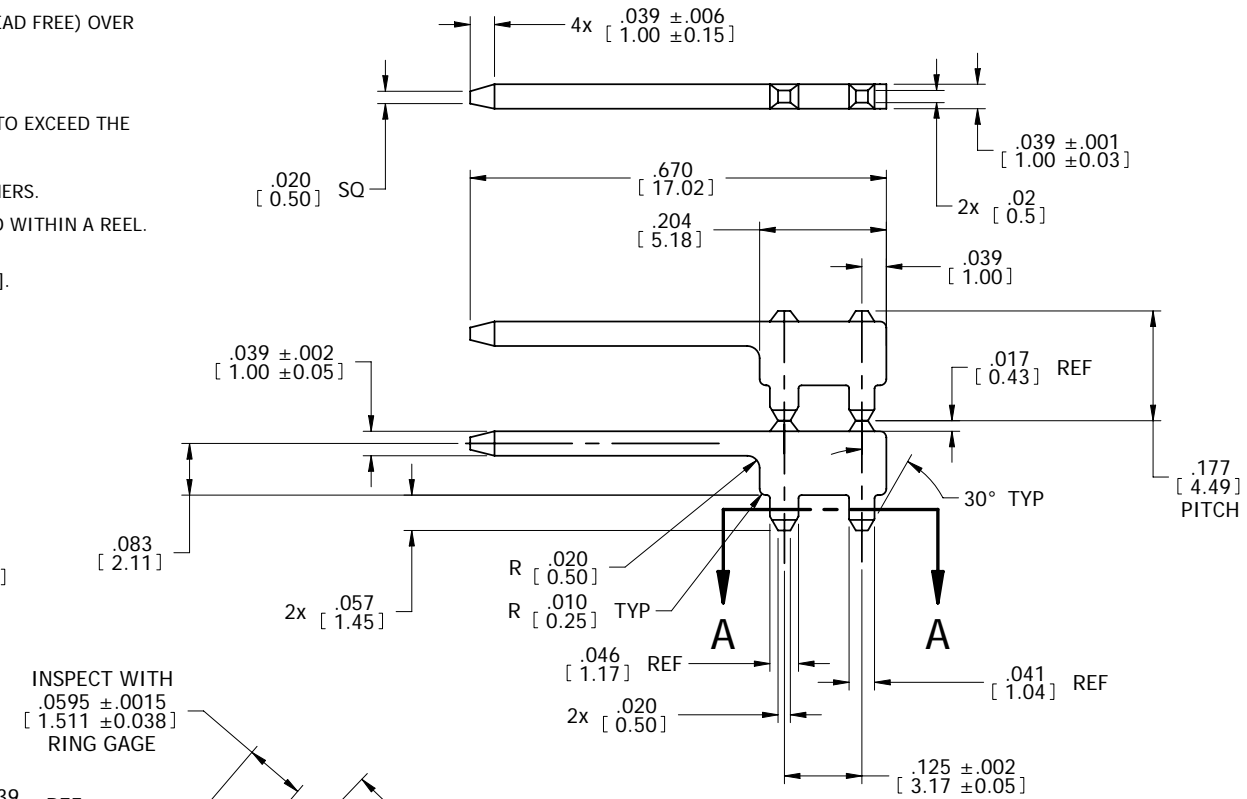
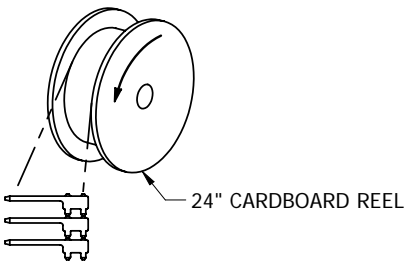


SUGGESTED PAD LAYOUT



APPLICATION VIEW

7 WINDING INSTRUCTION



INSPECT WITH  
.0595 ± .0015  
[1.511 ± 0.038]  
RING GAGE

INSPECT WITH  
.0565 ± .0020  
[1.435 ± 0.051]  
RING GAGE

SECTION A-A

CUSTOMER DRAWING

The drawing and the information set forth hereon are the property of Autossplice, Inc. and are to be held in trust and confidence. Publication, disclosure, or use for any purpose not expressly authorizing in writing by Autossplice, Inc. is prohibited.

MATERIAL:  
2  
FINISH:  
3

TOLERANCES UNLESS OTHERWISE SPECIFIED DIMENSIONS IN INCHES (mm)		autossplice®		Autossplice, Inc. 10121 Barnes Canyon Rd. San Diego, CA 92121-2725 858-535-0077	
DECIMAL	.XX = ± .01 [X.X] = [0.3] .XXX = ± .005 [X.XX] = [0.13]	THIRD ANGLE PROJECTION	DRAWN BY	BILLT	DATE
ANGULAR	± 5°		ENGINEERED BY	PVB	DATE
TITLE		DRAWING NUMBER		REVISION	
.039" [1.00] SQ F-LUG TERMINAL		C6-F1016-002TT		A	
SIZE	B	FSCM NO.	OAE89	DRAWING NUMBER	C6-F1016-002TT
SCALE	5/1	CAD NO.	C6-F1016-002TTa.dft	MODEL NO.	6-F1016-002TT.dwg
				SHEET 1 OF 1	