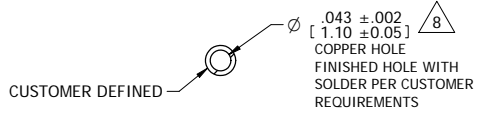


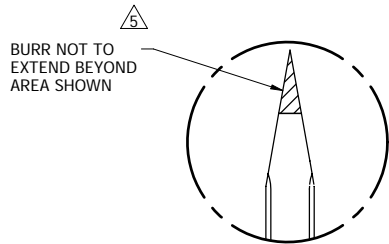
NOTES: UNLESS OTHERWISE SPECIFIED

1. INTERPRET DRAWING IN ACCORDANCE WITH ANSI Y14.5 1994.
2. MATERIAL: C26000 BRASS 1/2 HARD, .0252±/-.0006 PREPLATED STACK THICKNESS.
3. FINISH: PRE-PLATED .000040"-.000080" [0.00100-0.00200] REFLOWED TIN OVER .000012"-.000040" [0.00030-0.00100] COPPER PER ASTM B545.
4. ALL DIMENSIONS APPLY AFTER PLATING.
5. .003[0.08] MAX BLANKING BURR PERMISSIBLE, BURRS NOT TO EXCEED THE SPECIFIED FEATURE TOLERANCE. BURR SIDE FACES HUB. NO BURR WHERE NOTED.
6. .005[0.13] MAX RADII & FILLETS PERMISSIBLE ON ALL CORNERS.
7. QUANTITY OF PARTS PER REEL: 20K±15% ONE BREAK NOT LESS THAN 25% OF REEL CAPACITY. PACKAGE PER AUTOSPlice SPEC 0049. 25 lb MAX
8. RECOMMENDED PTH HOLE:  
COPPER PLATED HOLE SIZE:  $\varnothing .043 \pm .002$  [1.10±0.05]  
ADJUST DRILL SIZE TO OBTAIN THIS DIA FOR DIFFERENT PLATING THICKNESS.  
TIN / LEAD FINISHED HOLE SIZE:  $\varnothing .042 \pm .003$  [1.07±0.08]
9. TERMINAL RETENTION FORCE: TBD.

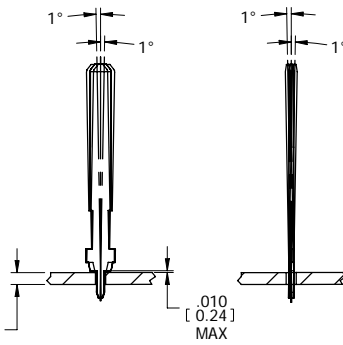
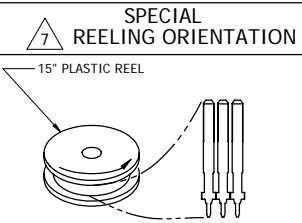
REV	REVISION RECORD	ECN	BY	APVD	DATE
B	CHANGED REEL MATERIAL TO PLASTIC	504231	BL	BB	11/22/2005
C	CHA REEL QTY. REMOVE INTERLEAF	504347	BL	BB	1/31/2006
D	DETAIL B: CHA .126±.004 TO .080±.004, CHA .110±.004 TO .060±.004	504547	BL	BB	5/22/2006



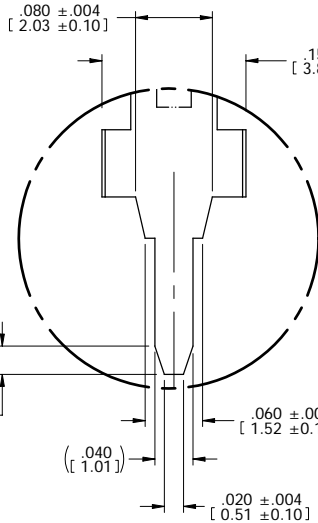
HOLE LAYOUT



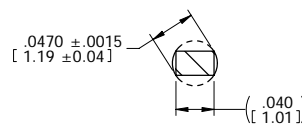
DETAIL C



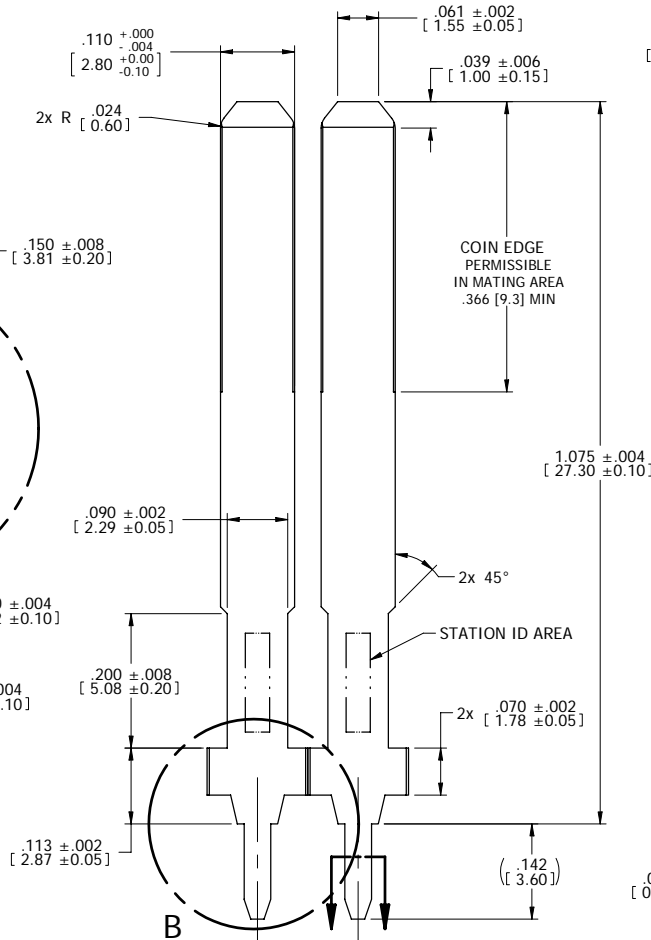
APPLICATION VIEW



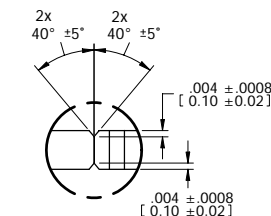
DETAIL B



SECTION D-D



DETAIL A



**CONFIDENTIAL  
CUSTOMER  
DRAWING**

The drawing and the information set forth hereon are the property of Autosplice, Inc. and are to be held in trust and confidence. Publication, disclosure, or use for any purpose not expressly authorizing in writing by Autosplice, Inc. is prohibited.

MATERIAL:	2
FINISH:	3

TOLERANCES UNLESS OTHERWISE SPECIFIED DIMENSIONS IN INCHES	DECIMAL: .XX = +.01 / -.01 [X.X] = +[0.3] / -.04 [XXX] = +[0.10]
ANGULAR: ± 2°	◇ DENOTES SPECIAL CHARACTERISTIC

<b>autosplice</b>		Autosplice, Inc. 10121 Barnes Canyon Rd. San Diego, CA 92121-2725 858.585.0077	
ENGINEERED BY	BL	DATE	01-27-05
DESIGNED BY	BIANCA	REVISION	D
TITLE: VERTICAL TERMINAL, 2.8 mm			
SIZE	B	DRAWING NUMBER	C7-V1090-002TT
SCALE	8:1	P&ID NO.	C7-V1090-002TT.dgn
		MODEL NO.	7-V1090-002.par
			SHEET 1 OF 1