

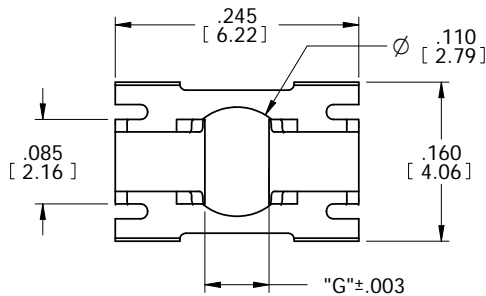
NOTES: UNLESS OTHERWISE SPECIFIED

1. INTERPRET DRAWING IN ACCORDANCE WITH ASME Y14.5-2009
2. MATERIAL: COPPER ALLOY.
3. PLATING: POST-PLATED. SEE PLATING DESCRIPTION.
4. BLANKING BURRS MUST NOT EXCEED .002 [0.05] MAX.
5. RADII AND FILLETS NOT TO EXCEED .005 [0.13] MAX.
6. ALL DIMENSIONS APPLY AFTER PLATING.
7. SOLDERABILITY PER ANSI/J-STD-002, CATEGORY 3.
8. CONTINUOUS PARTS TO BE PACKAGED ON 24" [609.6] CARDBOARD REELS. AUTOSPLICE FEEDERS ARE AVAILABLE.
9. TAPE AND REEL PARTS TO BE PACKAGED PER EIA STD-481 ON 15" [381] PLASTIC REELS. POCKETS DESIGNED FOR PICK UP NOZZLE OR GRIPPER JAW.

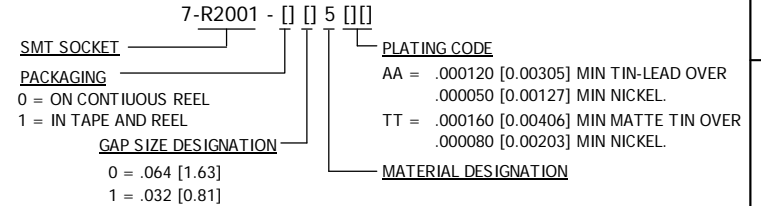
7-R2001-005 [ ]	.064 [1.63]	.173 [4.39]	.130 [3.30]	10,000	Ø .094 [2.39] RD
7-R2001-015 [ ]	.032 [0.81]	.165 [4.19]	.079 [2.01]	10,000	Ø .050 [1.27] RD
7-R2001-105 [ ]	.064 [1.63]	.173 [4.39]	.130 [3.30]	2,600	Ø .094 [2.39] RD
7-R2001-115 [ ]	.032 [0.81]	.165 [4.19]	.079 [2.01]	2,600	Ø .050 [1.27] RD
PART NUMBER	G	D	H	QTY/REEL	MATING PIN

PART NUMBER & DIMENSION TABLE

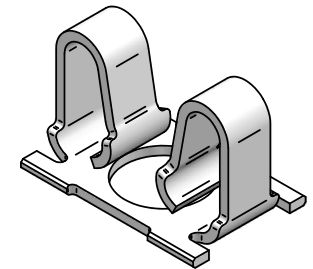
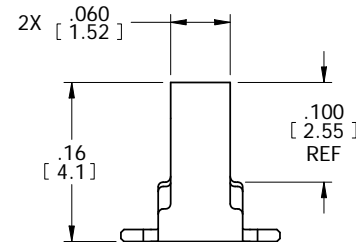
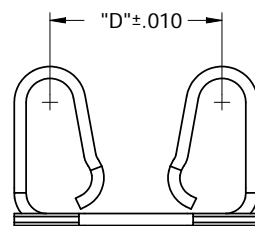
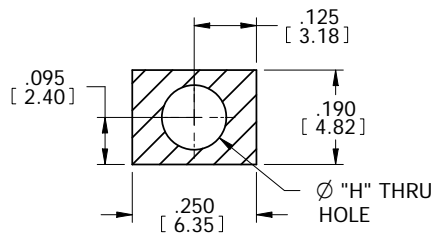
REV	REVISION RECORD	ECN	BY	APVD	DATE
A	RELEASE PER EWR 103084	503174	BILL	JB	02/26/04
B	CHNG QTY PER REEL TO 10K	503251	JB	JB	04/01/04
C	-015 PART GAP & T&R EWR 107748	506562	RJB	RJB	12/05/12
D	UPDATED P/N & DIMENSION TABLE	506629	CP	PVB	04/25/13



PART NUMBER BREAKDOWN

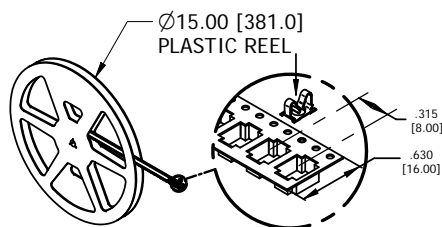


RECOMMENDED SOLDER PAD

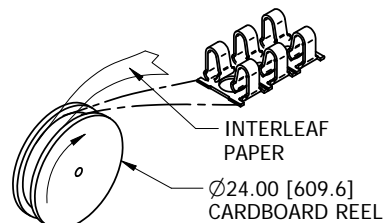


P/N 7-R2001-005 [ ] [ ] SHOWN

9 TAPE & REEL



8 CONTINUOUS REELED



CUSTOMER DRAWING

The drawing and the information set forth hereon are the property of Autossplice, Inc. and are to be held in trust and confidence. Publication, disclosure, or use for any purpose not expressly authorizing in writing by Autossplice, Inc. is prohibited.

MATERIAL:  
SEE NOTE 2

FINISH:  
SEE NOTE 3

TOLERANCES UNLESS OTHERWISE SPECIFIED DIMENSIONS IN INCHES (mm)		Autossplice, Inc. 10121 Barnes Canyon Rd. San Diego, CA 92121-2725 858-535-0077	
DECIMAL: .XX = ± .01 [X.X] = ± [0.3] XXX = ± .005 [X.XX] = ± [0.13]	THIRD ANGLE PROJECTION	DRAWN BY: BADGER	DATE: 12-06-12
ANGULAR: ± 3°	⊕	ENGINEERED BY: BADGER	DATE: 12-06-12
◇ DENOTES SPECIAL CHARACTERISTIC	TITLE: SMT SOCKET TERMINAL		
SIZE: B	FSCM NO: OAE89	DRAWING NUMBER: C7-R2001-[ ] [ ] 5 [ ] [ ]	REVISION: D
SCALE: 8:1	CAD NO: C7-R2001-[ ] [ ] 5 [ ] [ ] d.d	MODEL NO: 7-R2001-0 [ ] 5 .psm	SHEET 1 OF 1