

Solderball Pin™ Applications



Ethernet Fibre Channel



**Power Electronics
DC/DC Modules**

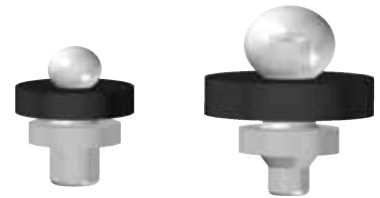


Power Over Ethernet

Solderball Pin™ Technology is engineered and widely used on POL (point of load) DC/DC Power applications when a PCB mezzanine design is necessary due to real estate limitations, offering additional thermal dissipation capability via the robust mechanical connection.

Compact configuration and flexibility as a discrete SMT component facilitates adoption into a broad scope of applications, including electronic lighting controls, remote telemetry monitoring, ethernet, fibre channel, storage area networks, automotive, and many other daughter-to-motherboard module-based subassemblies.

To obtain a sample kit contact us at:
solderballpin@autosplice.com



Authorized Distributors

HEILIND

Performance. Trust. Innovation.

800.400.7041
contact@heilind.com



800.325.0534
Contact Casey Donovan
cdonovan@keiconn.com

Autosplice Worldwide



Autosplice, Inc.
10121 Barnes Canyon Road
San Diego, CA 92121
USA
Tel: (858) 535-0077
E-mail: sales@autosplice.com



Autosplice Mexico, S. de R.L. de C.V.
Cartagena 18960 Plant 1 & 2
El Porvenir, Tijuana, BC 22224
Mexico
Tel: 52 664 625 8796
E-mail: sales@autosplice.com



Autosplice Europe GmbH
Muhlsteig 2,
90579 Langenzenn
Germany
Tel: 09101 / 9014 - 0
E-mail: info@autosplice.de



Autosplice Japan
3-7-39 Minami Cho,
Higashi Kurume Shi
Tokyo 203-0031 Japan
Tel: 81 424 62 8481
E-mail: info@autosplice.co.jp



Autosplice Asia Pte, Ltd.
Redhill Industrial Estate
1002 Jalan Bukit Merah, Unit #05-13 to 20,
Singapore 159456
Tel: 65 6276 8223
E-mail: sales@autospliasia.com.sg



Autosplice Paramount
7551 Rosecrans Ave.
Paramount, CA 90723
USA
Tel: (858) 535-0077
E-mail: sales@autosplice.com



Autosplice Industria E Comercio
Rua Laguna 79, Jardim Platina
CEP 06273-140, Osasco
Sao Paulo, Brazil
Tel: 55 11 3601 4445
E-mail: conect@autosplice.com.br



Autosplice Brittanic Ltd.
Units 1-5 Crompton Road Industrial Estate
Ilkeston, Derbyshire DE7 4BG
United Kingdom
Tel: 49 9102 9957 0
E-mail: info@autosplice.de



Autosplice Korea
Namdong Industrial Complex
117 Block 2, Lot 686-13, Gojan-Dong,
Namdong-Gu, Incheon City, South Korea
Tel: 82 32 812 9784
E-mail: info@autosplice.co.kr



Autosplice Electronics Ltd.
No. 17 Chuang Xin Road 1,
Xia Ling Bei Industrial Estate,
Liao Bu Town, Guang Dong Province, China
Tel : 0769-83525370
E-mail: sales@autospliechina.com

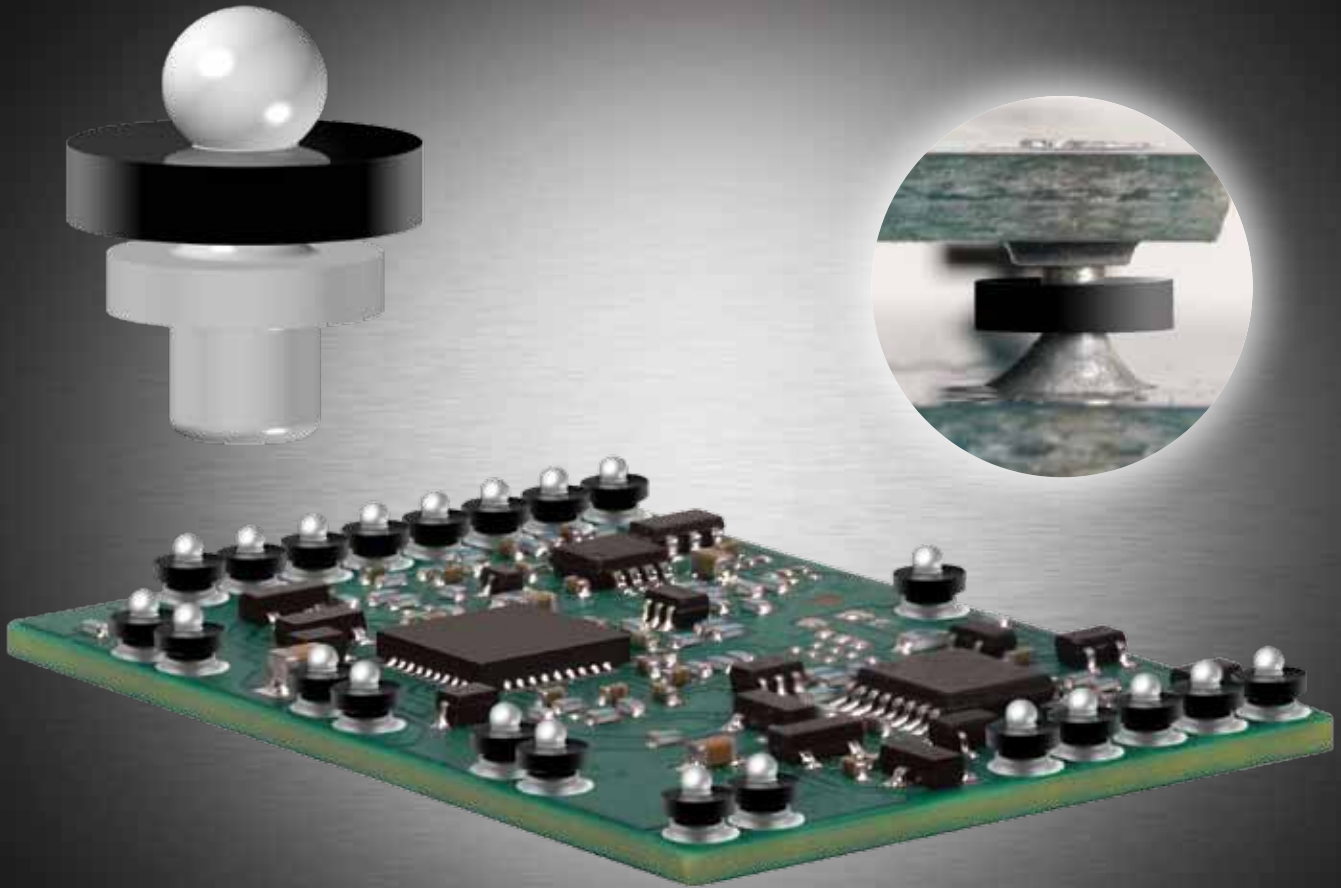


Innovative Interconnections™

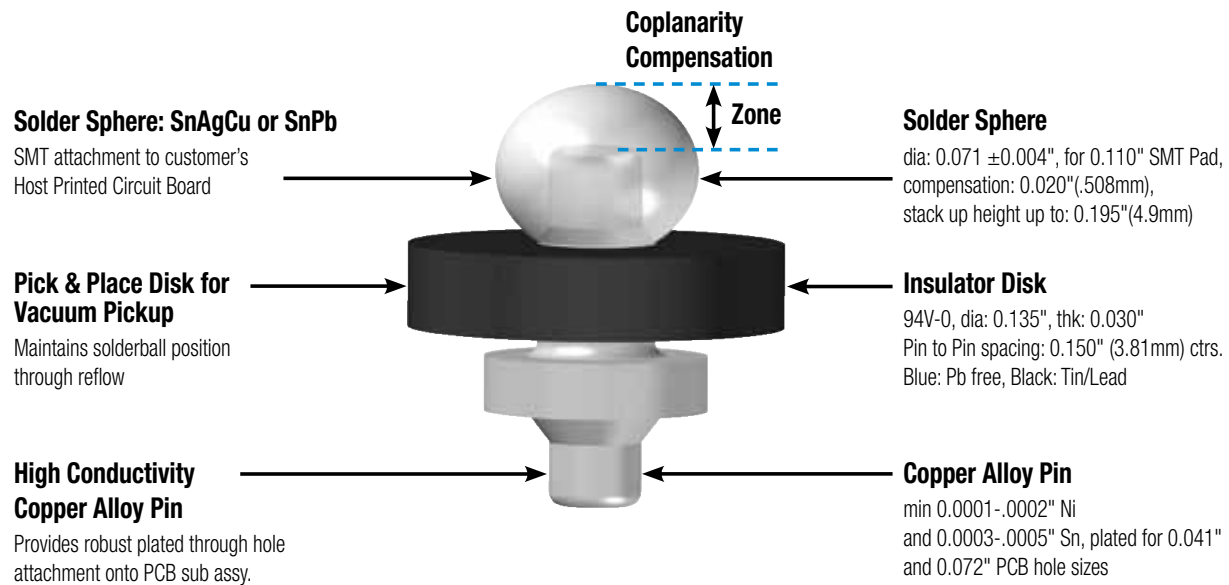
www.autosplice.com

solderballpin@autosplice.com 4

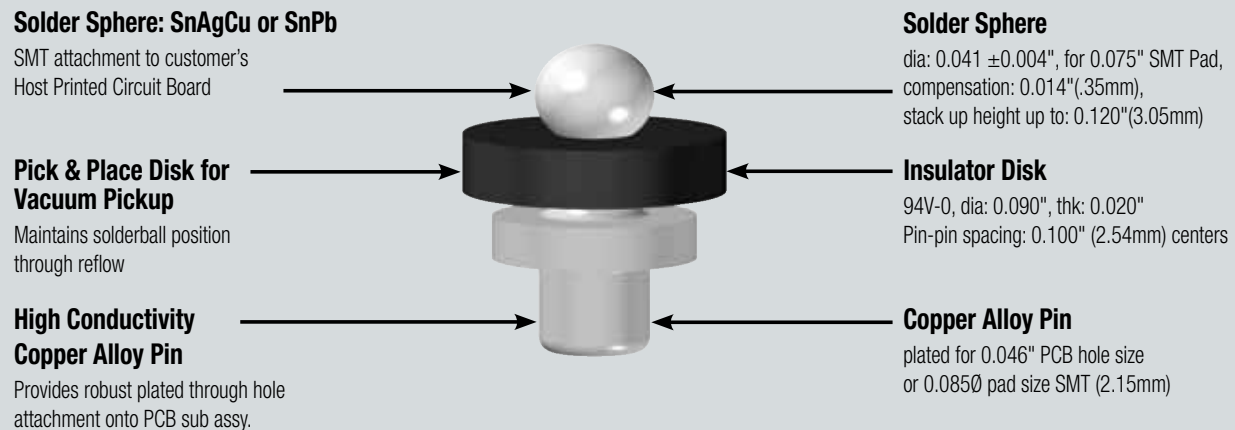
Solderball Pin™ Technology



Midi Solderball Pin™



Mini Solderball Pin™



Mechanical Specifications:

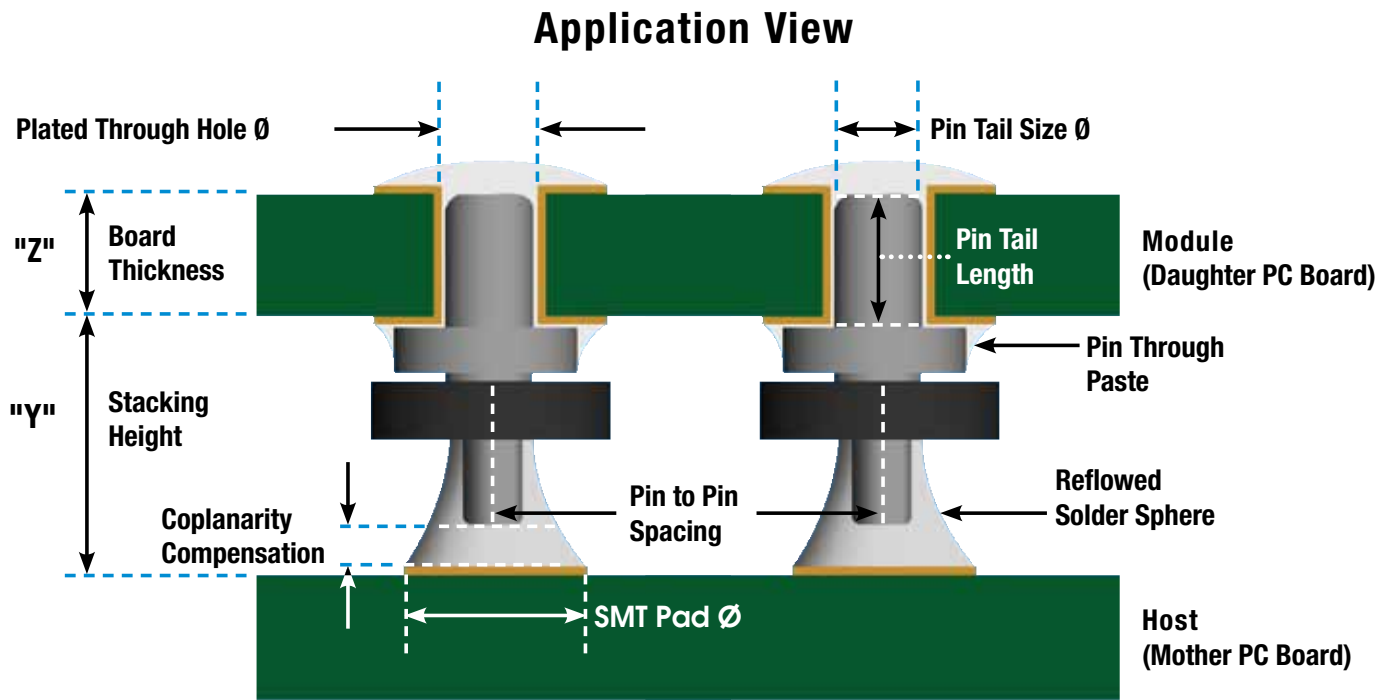
Pin Terminal :	High Conductivity Copper Alloy
Solder Sphere:	RoHs Compliant SAC Alloy or Tin/Lead
Packaging:	STD 16mm Tape & Reel per Spec EIA-481
Pick & Place:	Pin Trough Paste Via Standard SMT Equipment
Configurations:	email: solderballpin@autossplice.com



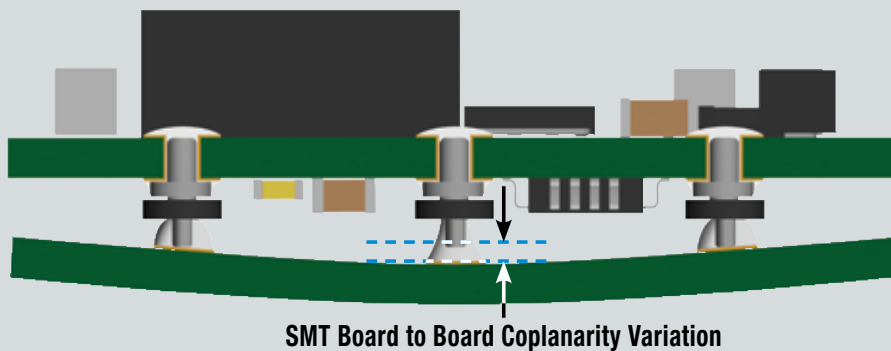
Lead Free Available

* Consult Factory for Specific Product Performance and Engineering Characteristics.

Solderball Pin™ Design Guide



SMT Solution to Coplanarity Interconnection for Power Modules and PCB-based Subassemblies



Solderball Pin™ Technology employs a highly conductive copper pin that incorporates a solder ball on the end that interfaces to the host PCB, providing additional solder to compensate for coplanarity variation on SMT board to board interconnection.

Features and Benefits:

- Automatic coplanarity compensation*: 0.020"
- High current carrying capability*: 20 amp DC
- Converts through hole device into SMT
- Conducts heat from device to Host PCB

