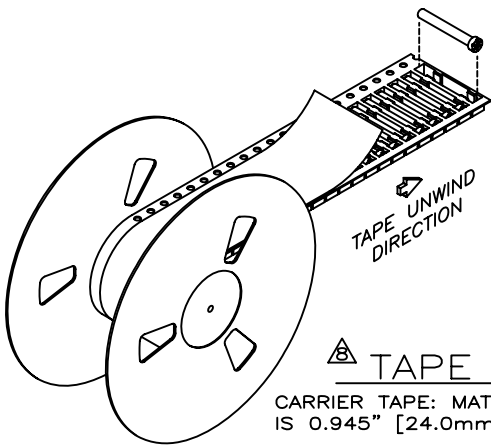


PART NO.	DIM."L"	PKG.	FINISH	PIN TIP
9-S16241375LLL	.375 [9.52]	"L"	"LL"	STD.
9-S16241560TTT	.560 [14.22]	"T"	"TT"	STD.
9-S16241670TLL	.670 [17.02]	"T"	"LL"	STD.
9-S16241670LLL	.670 [17.02]	"L"	"LL"	STD.
9-S16241670LTT	.670 [17.02]	"L"	"TT"	STD.
9-S16241670TTT	.670 [17.02]	"T"	"TT"	STD.

REV	REVISION RECORD	ECN	BY	APVD	DATE
A	RELEASED TO PRODUCTION	501951	GLT	MS	03-12-02
B	ADDED P/N 9-S16241375LLL, DELETED PLATING OPTION "AA"	502047	GLT	MS	03-21-02
C	RELEASED 9-S16241375LLL TO PRODUCTION	502159	GLT	KN	05-23-02
D	ADDED PLATING "TT" TO FINISH NOTE; REVISED TIP CONFIGURATION	503119	GLT	SF	02-22-04
E	DELETED A/S PLATING SPEC. NO.'s; CHANGED NOTE 5: 2,500 PINS LOOSE-PC. WAS 5,000	503374	GLT	MS	05-24-04
F	ADD 9-S16241670LTT PER EWR 105165	504695	HR	PVB	09-11-06
G	ADD 2 P/N'S PER EWR 105596	505100	HR	PVB	08-29-07
H	CORRECT ANGLE TOL PER EWR105867	505339	HR	PVB	05-29-08

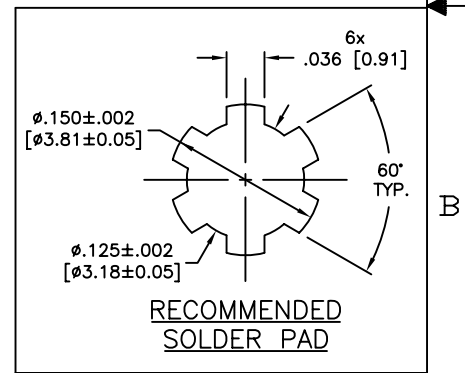
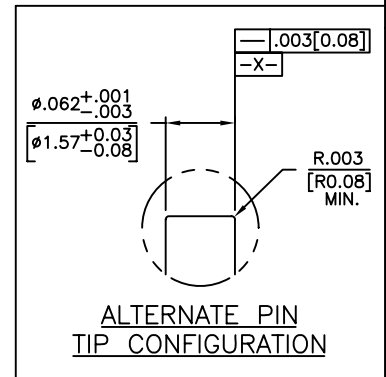
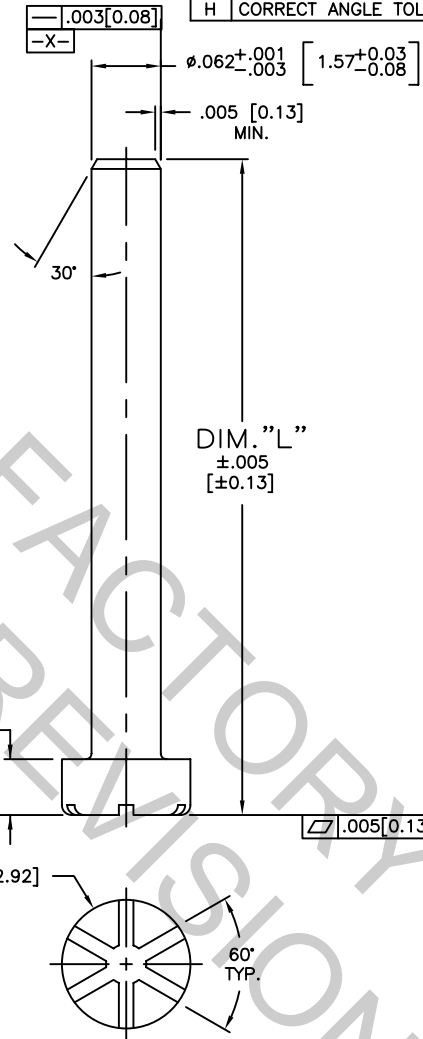
NOTES: (UNLESS INDICATED OTHERWISE)

- 1) INTERPRET DRAWING IN ACCORDANCE WITH ANSI Y14.5M-1982.
- 2) ALL PIN DIMENSIONS ARE AFTER PLATING.
- 3) MATERIAL: C10200 COPPER.
- 4) ALL FILLETS AND RADII SHALL BE .005-.010 [0.13-0.25].
- 5) PACKAGING: "L"= 2,500 PINS LOOSE PIECE IN A POLYBAG (NOT SHOWN); "T"= 5,000 PINS IN TAPE & REEL PER EIA STD-481 (SEE NOTE 8).
- 6) FINISH: "LL"= POST PLATED, .000300-.000500 [0.008-0.013] THICK 90/10 (±5%) TIN-LEAD OVER .000050-.000150 [0.0013-0.0038] THICK NICKEL. "TT"= POST PLATED, .000300-.000500 [0.008-0.013] THICK 100% MATTE TIN OVER .000100-.000200 [0.003-0.005] THICK NICKEL.
- 7) PIN SOLDERABILITY PER IPC/EIA /JEDEC J-STD-002, TEST A, CAT 3
- THE PLACEMENT OF PINS ONTO A P.C. BOARD MAY REQUIRE AN AUTOSPlice FEEDER, CONSULT FACTORY FOR AVAILABILITY.
- PINS SHALL BE MANUFACTURED WITH THE STANDARD TIP CONFIGURATION UNLESS INDICATED OTHERWISE.



TAPE & REEL PACKAGING

CARRIER TAPE: MATERIAL IS BLACK, ANTI-STATIC POLYSTYRENE; TAPE WIDTH IS 0.945" [24.0mm], & POCKET PITCH IS 0.157" [4.0mm].
 COVER TAPE: MATERIAL IS ANTI-STATIC, POLYESTER FILM.
 REELS: FLANGES ARE $\phi 13.0"$ [$\phi 330.2\text{mm}$] & MATERIAL IS PLASTIC.
 TAPE LEADER: A MINIMUM OF 50 EMPTY POCKETS OF SEALED CARRIER TAPE WITH ANOTHER 32.0" [812.8mm] OF COVER TAPE EXTENDING BEYOND THAT.
 TAPE TRAILER: A MINIMUM OF 30 EMPTY POCKETS OF SEALED CARRIER TAPE.



CUSTOMER DRAWING

This drawing and the information set forth herein are the property of Autossplice, Inc. and are to be held in trust and confidence. Publication, duplication, disclosure, or use for any purpose not expressly authorized in writing by Autossplice, Inc. is prohibited.

TOLERANCES UNLESS OTHERWISE SPECIFIED (ALL DIMS. IN INCHES/MM)	
DECIMALS: .XX	±.01
XXX	±.003
XXXX	±.004
XXXXX	±.005
ANGULAR: 25°	
	±.005
	±.010

autossplice 10121 Barnes Canyon Road San Diego, California 92121 (658) 535-0077

THIRD ANGLE PROJECTION

DRAWN BY: JOE DATE: 4-25-01
 ENGINEERED BY: BIANCA DATE: 4-25-01

TITLE: SURFACE MOUNT PIN, $\phi 0.062$ TREADHEAD, STRAIGHT

SIZE: C	FOLD NO.: OAE89	DRAWING NUMBER: C9-S16241	REVISION: H
SCALE: -	CAD FILE NO.:	C9-S16241XXXXXXh.dwg	SHEET 1 OF 1