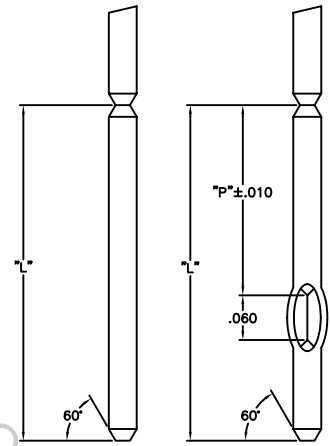
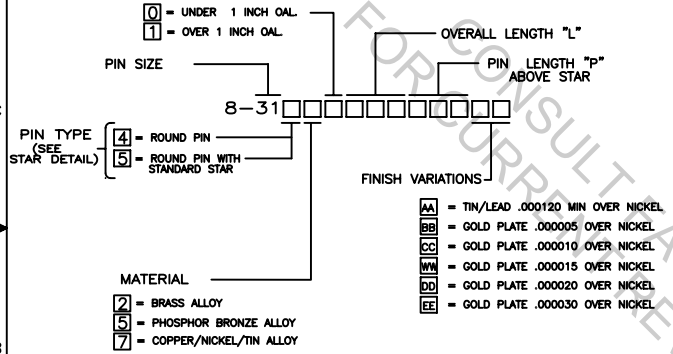


REV	REVISION RECORD	ENH BY	MPW	DATE
A	INITIAL RELEASE	HHS	MAC	08-05-92
B	PER ECH 1-4-91	HHS	MAC	08-05-92

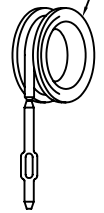
NOTE: UNLESS OTHERWISE SPECIFIED

1. INTERPRET DRAWING IN ACCORDANCE WITH ANSI Y14.5-1982.
2. REMOVED
3. PITCH CONSISTENCY TO BE WITHIN ±.005 OVER 3,000 INCHES.
- ▲ PART TO BE SUPPLIED ON A CONTINUOUS REEL.
5. ALL DIMENSIONS APPLY AFTER PLATING.

PART NUMBER BREAKDOWN



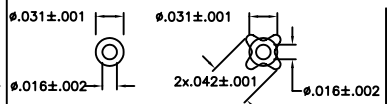
▲ REELING ORIENTATION  
AP/2 REEL  
(24" O.D. x 20" I.D.)



PIN WITH NO STAR

PIN WITH STAR

CUSTOMER DRAWING



4 ROUND NO STAR      5 ROUND STD. STAR

STAR DETAIL

This drawing and the information on both sheets are the property of Autoplace, Inc. and are to be held in trust and confidence. Reproduction, modification, distribution, or use for any purpose not expressly authorized in writing by Autoplace, Inc. is prohibited.

ALL DIMENSIONS ARE IN INCHES	<b>Autoplace</b> INC. Autoplace, Inc. 10121 Serrano Canyon Road San Diego, California 92121 951-551-0022	DESIGNED BY <b>MAC M</b>	DATE <b>08-05-92</b>
DECIMAL: XX = ±.01 XXX = ±.005		DRAWN BY <b>BIANCA</b>	DATE <b>08-05-92</b>
ANGULAR: ±.5°		TITLE <b>AUTOPIN/2 DETAIL PART DRAWING</b>	
		PART NO. <b>C 0AE89 C8-31[4thrus]0000 B</b>	SHEET 1 OF 1