

4

3

2

1

NOTES: UNLESS OTHERWISE SPECIFIED

1. INTERPRET DRAWING IN ACCORDANCE WITH ASME Y14.5-1994
2. PARTS TO BE PACKAGED IN TAPE & REEL PER EIA STD-481
3. PICK-UP TAB DEFLECTS UPON INSERTION OF THE SHIELD.

PART NUMBER BREAKDOWN

7-V2010 - 1 [ ] 5 [ ] [ ]

RFI CLIP

PACKAGING

VARIATION

CODE	SHIELD	"A" HOLES
1	.014±.002 [0.36±0.05]	No Hole
2	.019±.002 [0.48±0.05]	No Hole
6	.014±.002 [0.36±0.05]	.040 [1.02]
7	.019±.002 [0.48±0.05]	.040 [1.02]

PLATING CODE

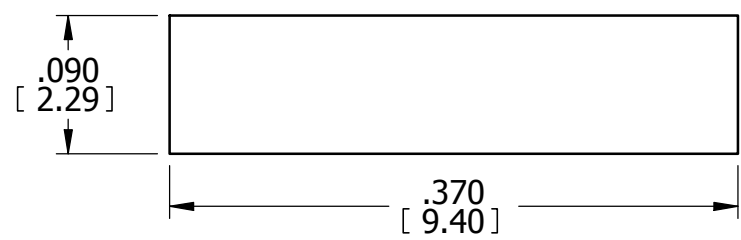
AA= PREPLATED .000120" [0.00305] MIN Sn/Pb OVER  
.000050" [0.00127] MIN Ni

TT= PREPLATED .000120" [0.00305] MIN Sn OVER  
.000050" [0.00127] MIN Ni

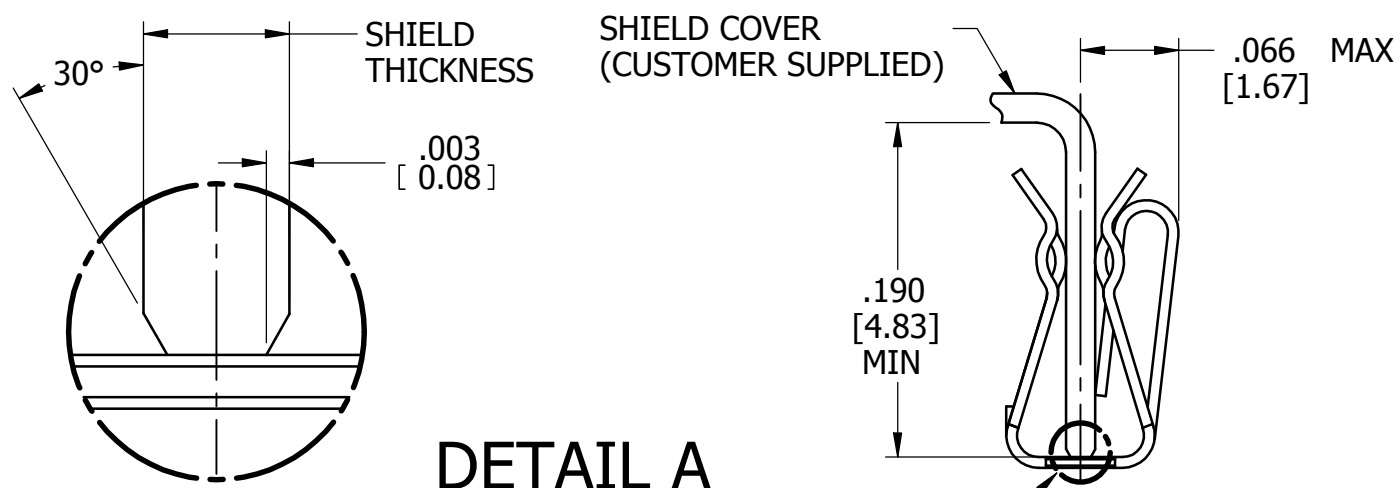
MAT'L DESIGNATION

5= COPPER ALLOY

REV	REVISION RECORD	ECN	BY	APVD	DATE
A	INITIAL RELEASE PER EWR990064	502181	JB	JB	06/05/02
B	CHG QTY PER REEL TO 1500	502202	JB	JB	06/20/02
C	ADDED P/N PER EWR103508	503111	BILL	JB	01/20/04
D	ADDED DUAL DIM PER EWR103940	503412	BILL	JB	6/22/2004
E	CORRECT DIM ON SOLDER PAD	505093	HR	PVB	8/27/2007
F	CORRECT DIM ON SOLDER PAD	505172	HR	PVB	11/9/2007
G	ADD "mm" PER EWR105675	505245	HR	PVB	1/14/2008
H	ADDED .190 MIN SHIELD HEIGHT	505554	DJA	HR	9/24/2008
J	CARRIER TAPE 16mm WIDE x 8mm PITCH	506271	RAB	PVB	7/7/2011

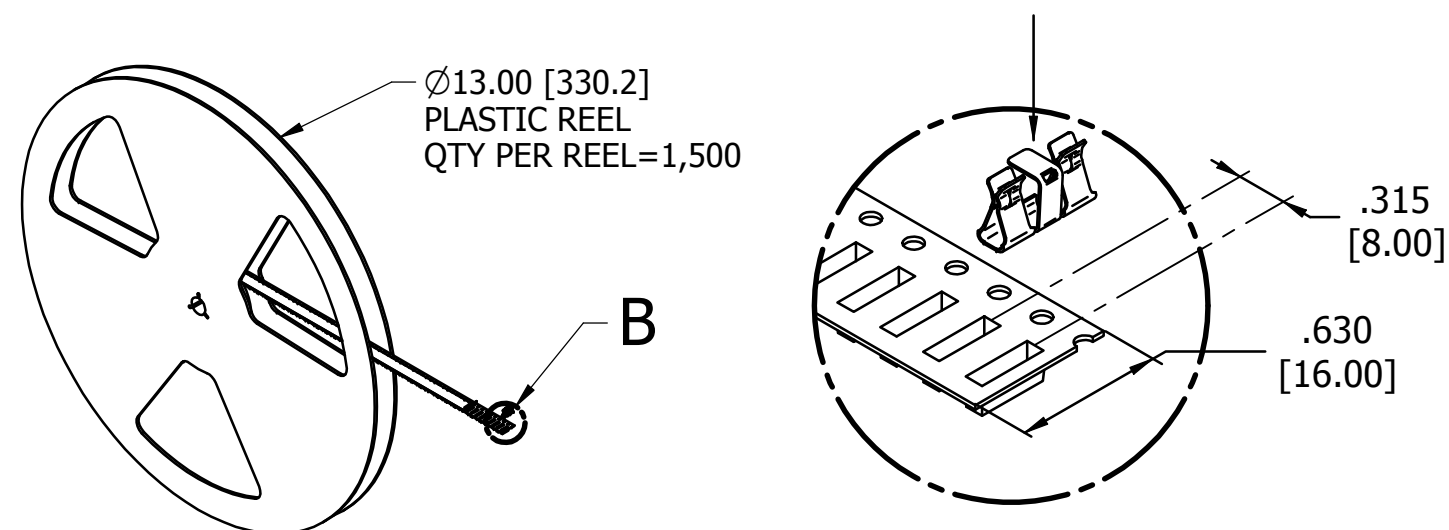


RECOMMENDED PAD SIZE

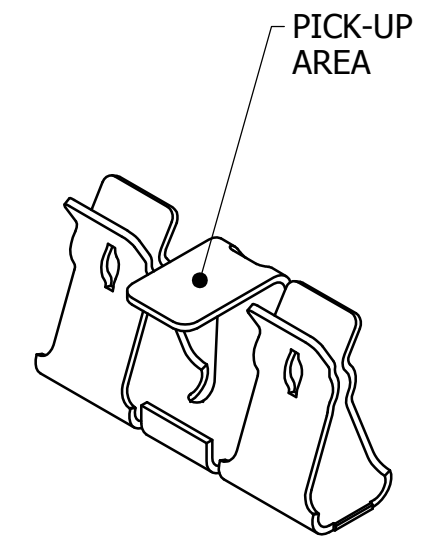
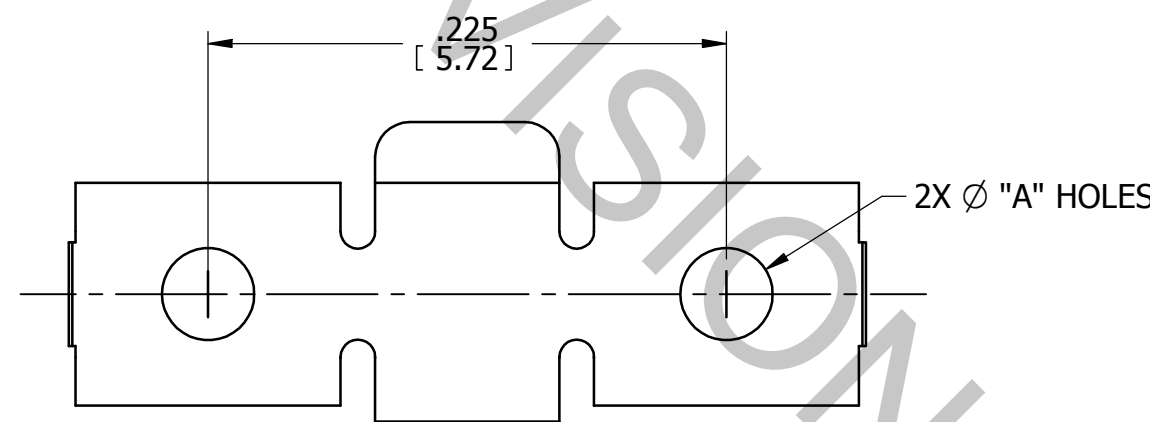
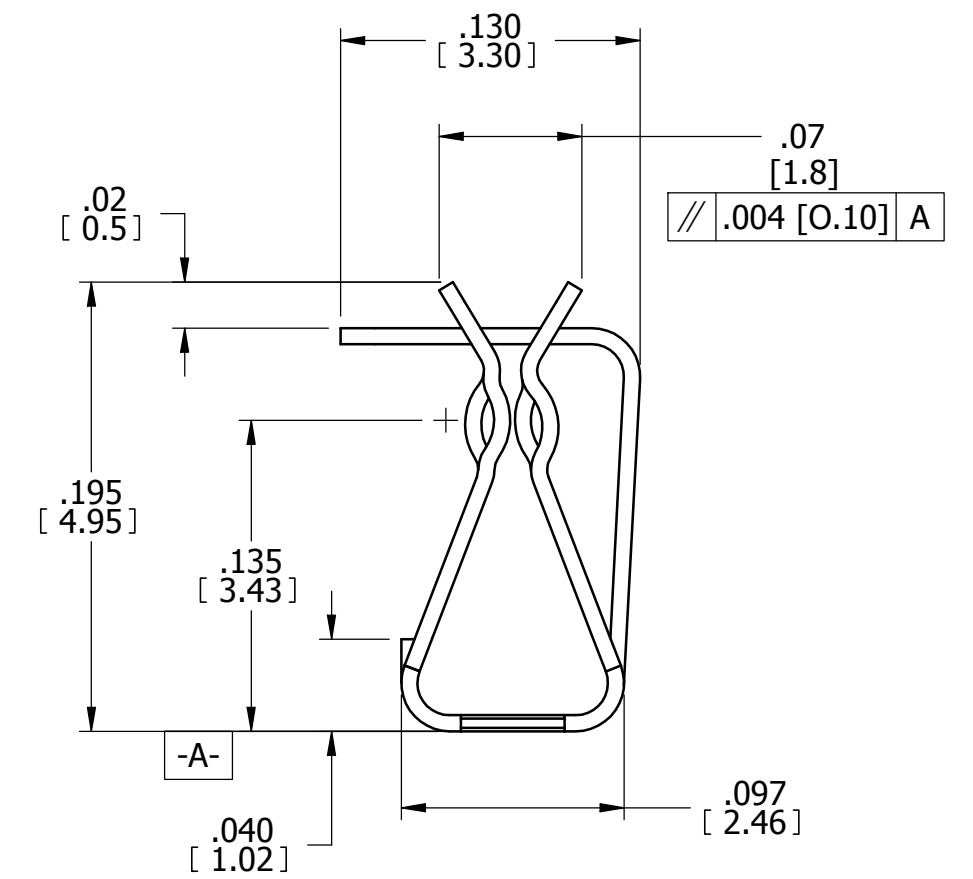
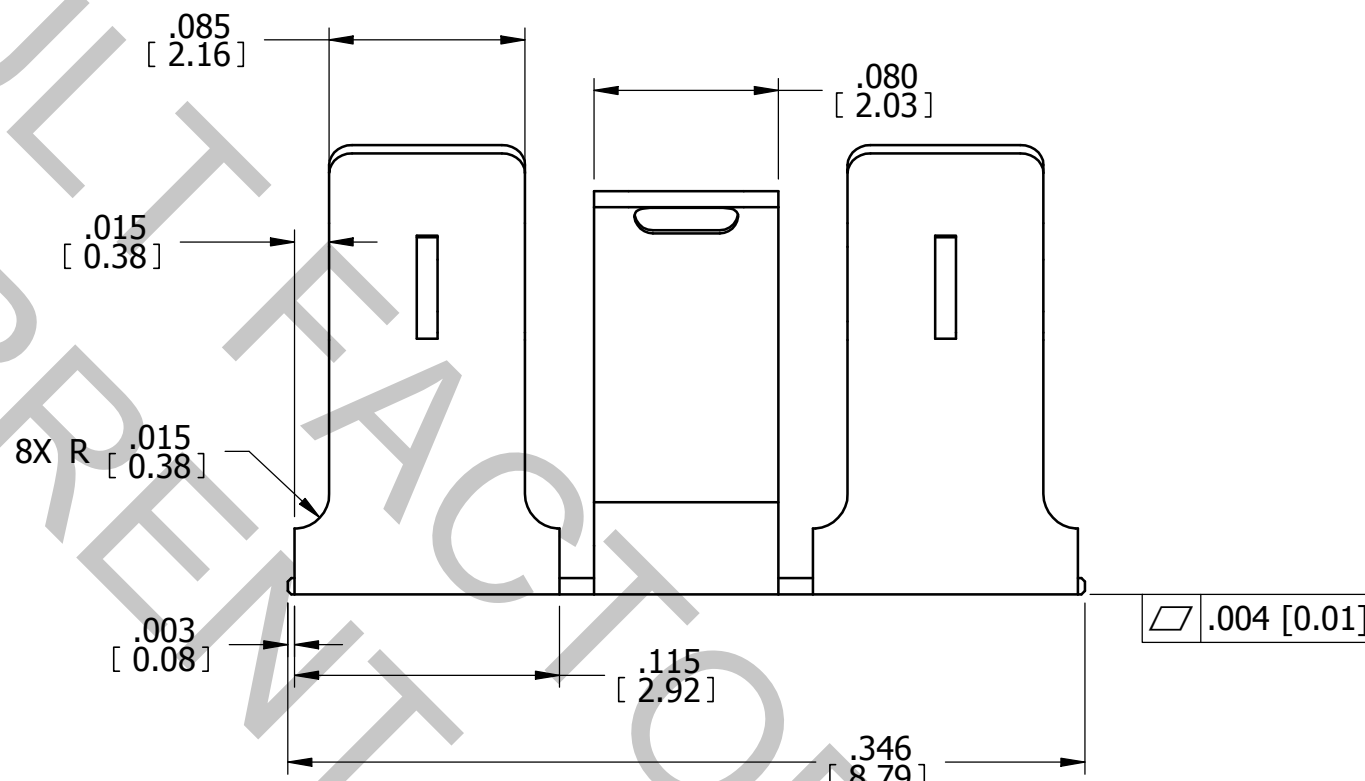


DETAIL A  
EDGE FINISH  
RECOMMENDATION

APPLICATION VIEW



TAPE & REEL PACKAGING



CUSTOMER DRAWING

The drawing and the information set forth hereon are the property of Autossplice, Inc. and are to be held in trust and confidence. Publication, disclosure, or use for any purpose not expressly authorizing in writing by Autossplice, Inc. is prohibited.

MATERIAL:

FINISH:

TOLERANCES UNLESS OTHERWISE SPECIFIED DIMENSIONS IN [INCHES (mm)]				Autossplice, Inc. 10121 Barnes Canyon Rd. San Diego, CA 92121-2725 619-535-0077	
DECIMAL:	.XX = ±.02 [X.X] = ±[0.5] .XXX = ±.010 [X.XX] = ±[0.25]	THIRD ANGLE PROJECTION		DRAWN BY	JOE
ANGULAR:	± 1°	TITLE	SMT MAXI RFI CLIP		
	DENOTES SPECIAL CHARACTERISTIC	SIZE	C OAE89	DRAWING NUMBER	C7-V2010-1[ ] [ ] [ ] [ ]
SCALE 12:1 [CAD NO. C7-v2010-1[ ] [ ] [ ] [ ]].dft		MODEL NO.	7-v2010-015.psm	REVISION	J
				DATE	12/7/99
				ENGINEERED BY	JB
				DATE	12/7/99
				SHEET 1 OF 1	

4

3

2

1