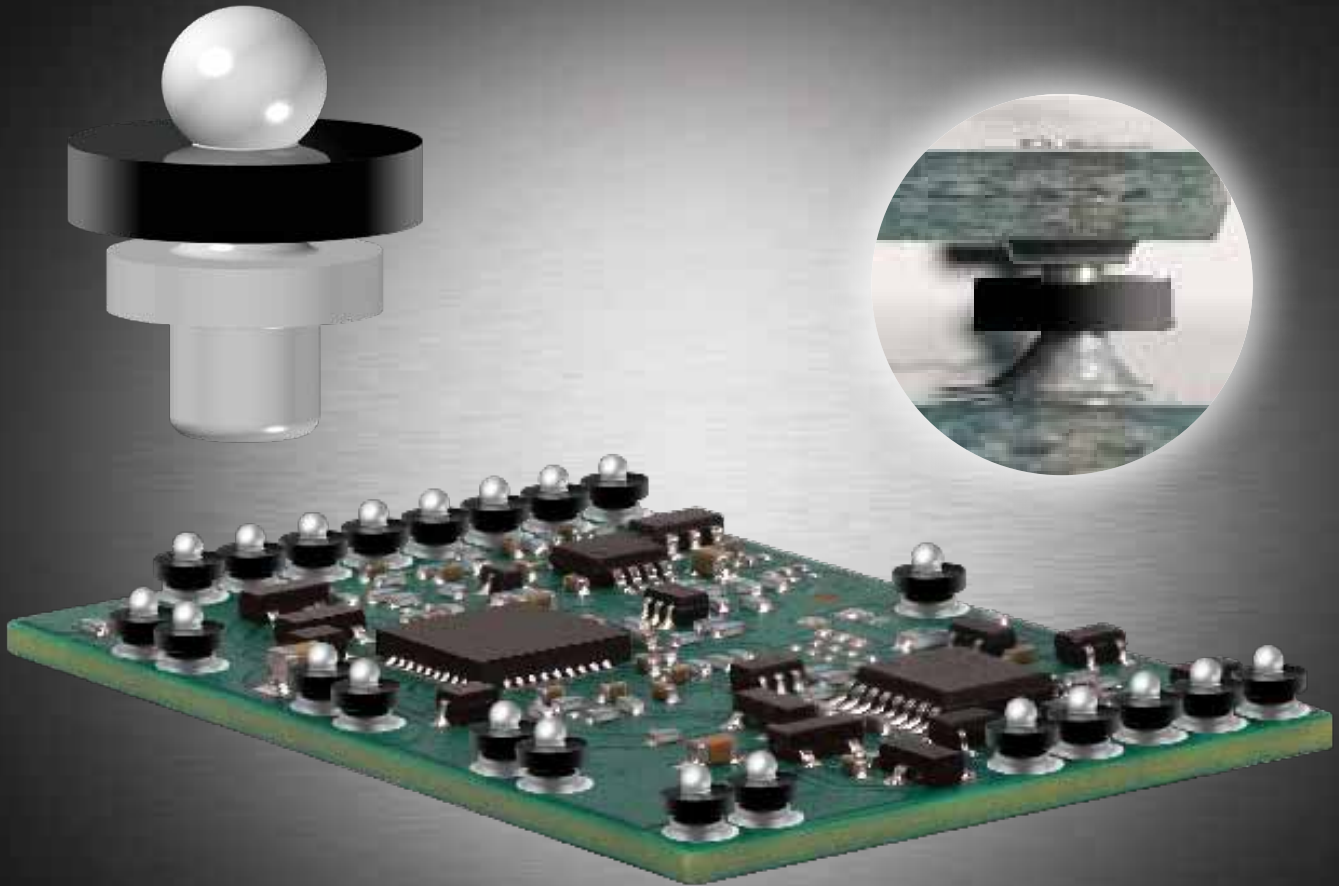


# Solderball Pin™ Technology



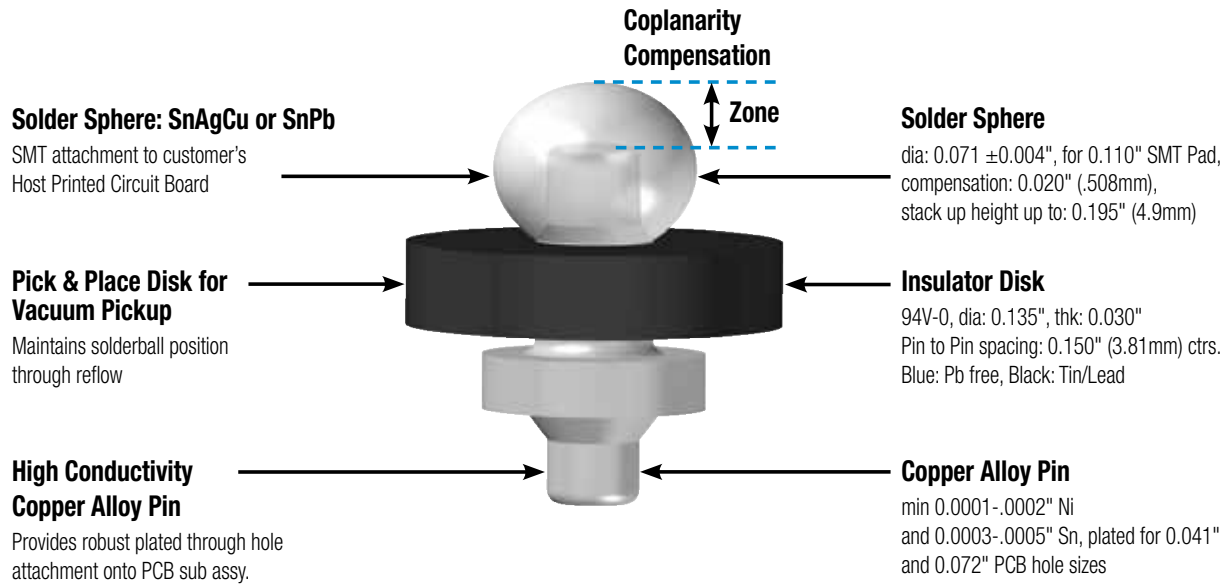
*Inspired Global Solutions™*

bulletin #0910sb

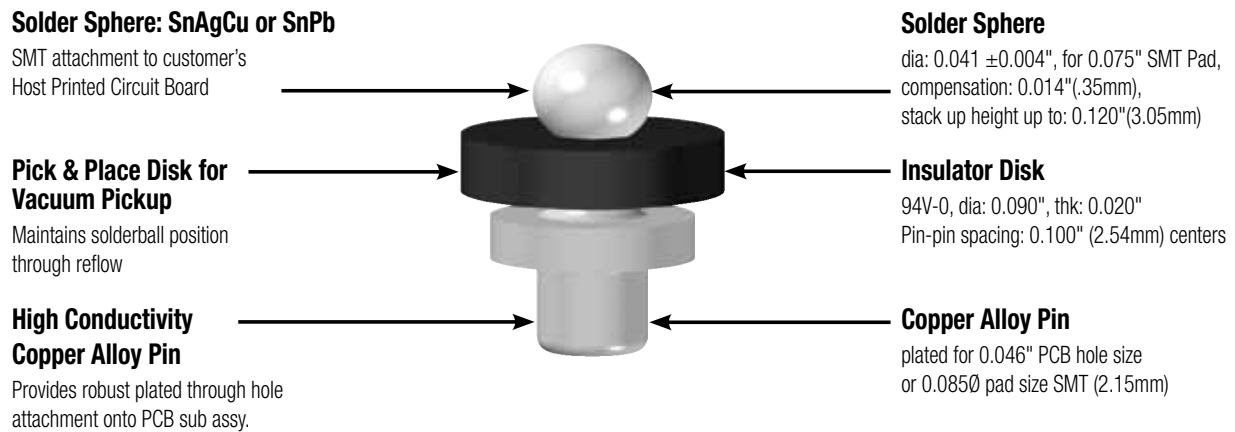
**autossplice** <sup>®</sup>

Innovative Interconnections™

## Midi Solderball Pin™



## Mini Solderball Pin™



### Mechanical Specifications:

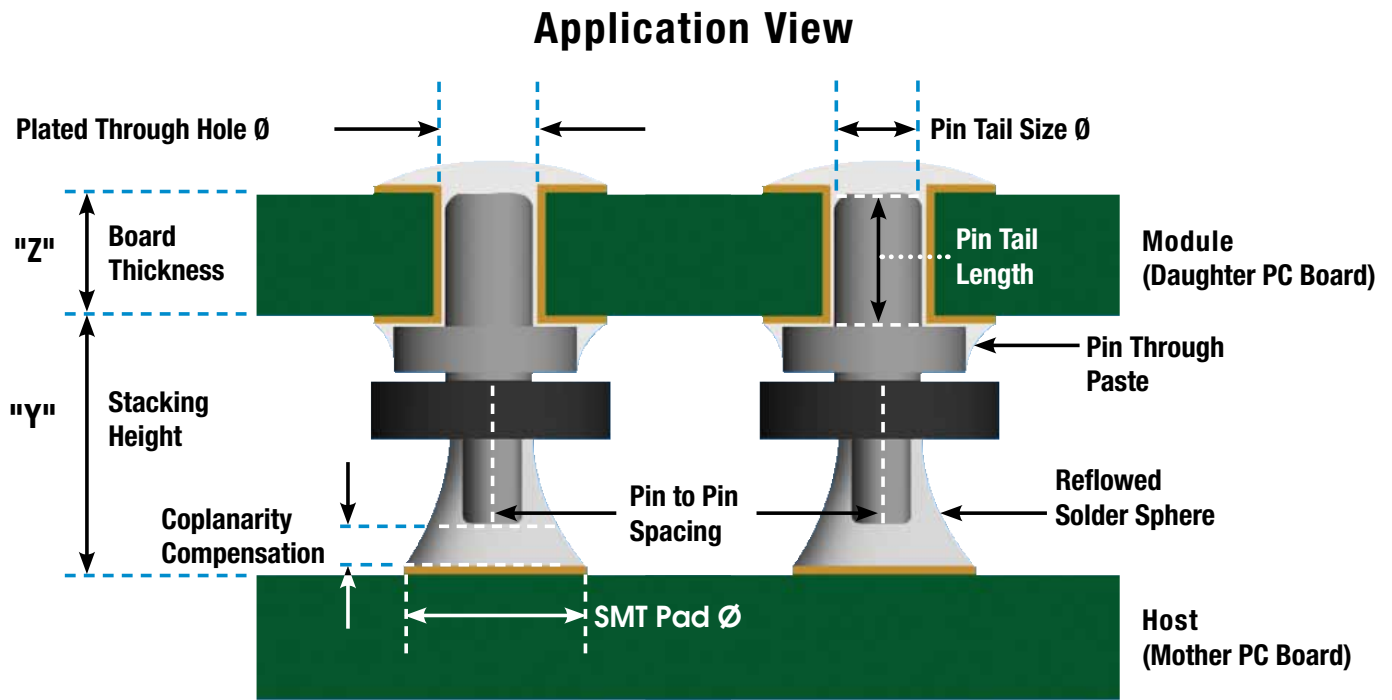
Pin Terminal :	High Conductivity Copper Alloy
Solder Sphere:	RoHs Compliant SAC Alloy or Tin/Lead
Packaging:	STD 16mm Tape & Reel per Spec EIA-481
Pick & Place:	Pin Trough Paste Via Standard SMT Equipment
Configurations:	email: solderballpin@autossplice.com



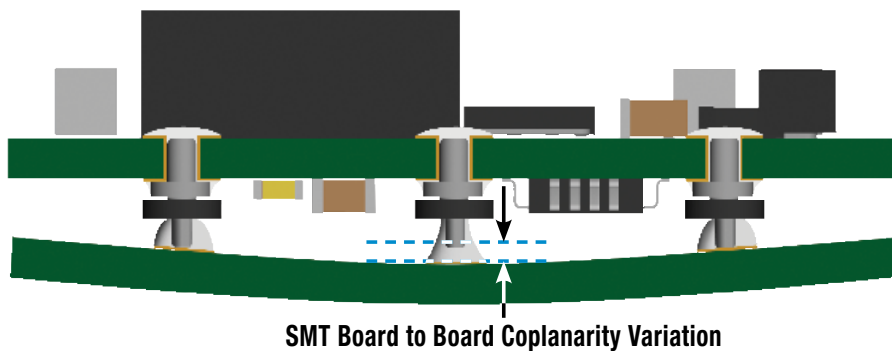
Lead Free Available

\* Consult Factory for Specific Product Performance and Engineering Characteristics.

# Solderball Pin™ Design Guide



## SMT Solution to Coplanarity Interconnection for Power Modules and PCB-based Subassemblies



Solderball Pin™ Technology employs a highly conductive copper pin that incorporates a solder ball on the end that interfaces to the host PCB, providing additional solder to compensate for coplanarity variation on SMT board to board interconnection.

### Features and Benefits:

- Automatic coplanarity compensation\*: 0.020"
- High current carrying capability\*: 20 amp DC
- Converts through hole device into SMT
- Conducts heat from device to Host PCB



# Solderball Pin™ Applications



**Ethernet Fibre Channel**



**Power Electronics  
DC/DC Modules**

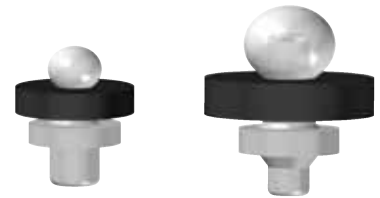


**Power Over Ethernet**

Solderball Pin™ Technology is engineered and widely used on POL (point of load) DC/DC Power applications when a PCB mezzanine design is necessary due to real estate limitations, offering additional thermal dissipation capability via the robust mechanical connection.

Compact configuration and flexibility as a discrete SMT component facilitates adoption into a broad scope of applications, including electronic lighting controls, remote telemetry monitoring, ethernet, fibre channel, storage area networks, automotive, and many other daughter-to-motherboard module-based subassemblies.

To obtain a sample kit contact us at:  
solderballpin@autosplice.com



## Authorized Distributors



Performance. Trust. Innovation.

800.400.7041  
contact@heilind.com



800.325.0534  
Contact Casey Donovan  
cdonovan@keiconn.com

## Autosplice Worldwide



Autosplice, Inc.  
10121 Barnes Canyon Road  
San Diego, CA 92121  
USA  
Tel: (858) 535-0077  
E-mail: sales@autosplice.com



Autosplice Mexico, S. de R.L. de C.V.  
Cartagena 18960 Plant 1 & 2  
El Ponvenir, Tijuana, BC 22224  
Mexico  
Tel: 52 664 625 8796  
E-mail: sales@autosplice.com



Autosplice Europe GmbH  
Mühlsteig 2,  
D-90579 Langenzenn  
Germany  
Tel: 49 9101 9014 0  
E-mail: info@autosplice.de



Autosplice Japan  
3-7-39 Minami Cho,  
Higashi Kurume Shi  
Tokyo 203-0031 Japan  
Tel: 81 424 62 8481  
E-mail: info@autosplice.co.jp



Autosplice Asia Pte, Ltd.  
Redhill Industrial Estate  
1002 Jalan Bukit Merah, Unit #05-13,  
Singapore 159456  
Tel: 65 6276 8223  
E-mail: sales@autosplianceasia.com.sg



Autosplice Paramount  
7551 Rosecrans Ave.  
Paramount, CA 90723  
USA  
Tel: (858) 535-0077  
E-mail: sales@autosplice.com



Autosplice Industria E Comercio  
Rua Laguna 79, Jardim Platina  
CEP 06273-140, Osasco  
Sao Paulo, Brazil  
Tel: 55 11 3601 4445  
E-mail: conect@autosplice.com.br



Autosplice Brittanica Ltd.  
Units 1 Crompton Rd. Industrial Estate  
Ilkeston, Derbyshire DE7 4BG  
United Kingdom  
Tel: 44 1159 440 258  
E-mail: info@autosplice.de



Autosplice Korea  
Namdong Industrial Complex  
117 Block 2, Lot 686-13, Gojan-Dong,  
Namdong-Gu, Incheon City, South Korea  
Tel: 82 32 812 9784  
E-mail: info@autosplice.co.kr



Autosplice Electronics (Dongguan) Ltd.  
No. 17 Chuang Xin Road 1,  
Xia Ling Bei Industrial Estate,  
Liao Bu Town, Guang Dong Province, China  
Tel : 0769-83525370  
E-mail: sales@autospliancechina.com



Innovative Interconnections™

*Inspired Global Solutions™*

www.autosplice.com

solderballpin@autosplice.com 4